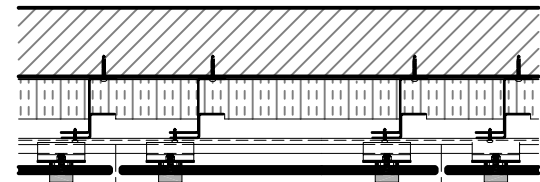


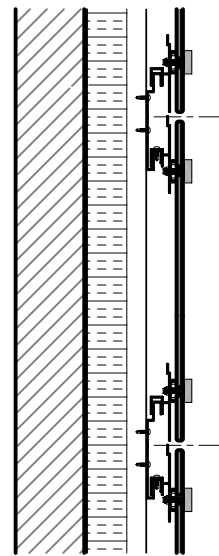
# KPS RS GLASS SUBFRAMING LAYOUT AND NOTES

## SEQUENCE OF INSTALLATION:

1. APPLY MEMBRANE.
2. FASTEN VERTICAL STEEL CLIPS.
3. INSULATION (PINED IF NECESSARY).
4. FASTEN PRIMARY @ TOP PANEL TRACK AND HANG ON AND FIX CLIPS TO THE TRACK.
5. FASTEN SECOND CONTINUOUS HORIZONTAL TRACK.
6. CONNECT PANELS AS SHOWN IN DETAILS AND IN ACCORDANCE W/ ENGINEERS SPECS.



EXTERIOR WALL CONSTRUCTION-PLAN



CONT. TRACK A W/ 2-#10 SCREWS @ 16" O.C

GLASS EXPOSED FASTENER

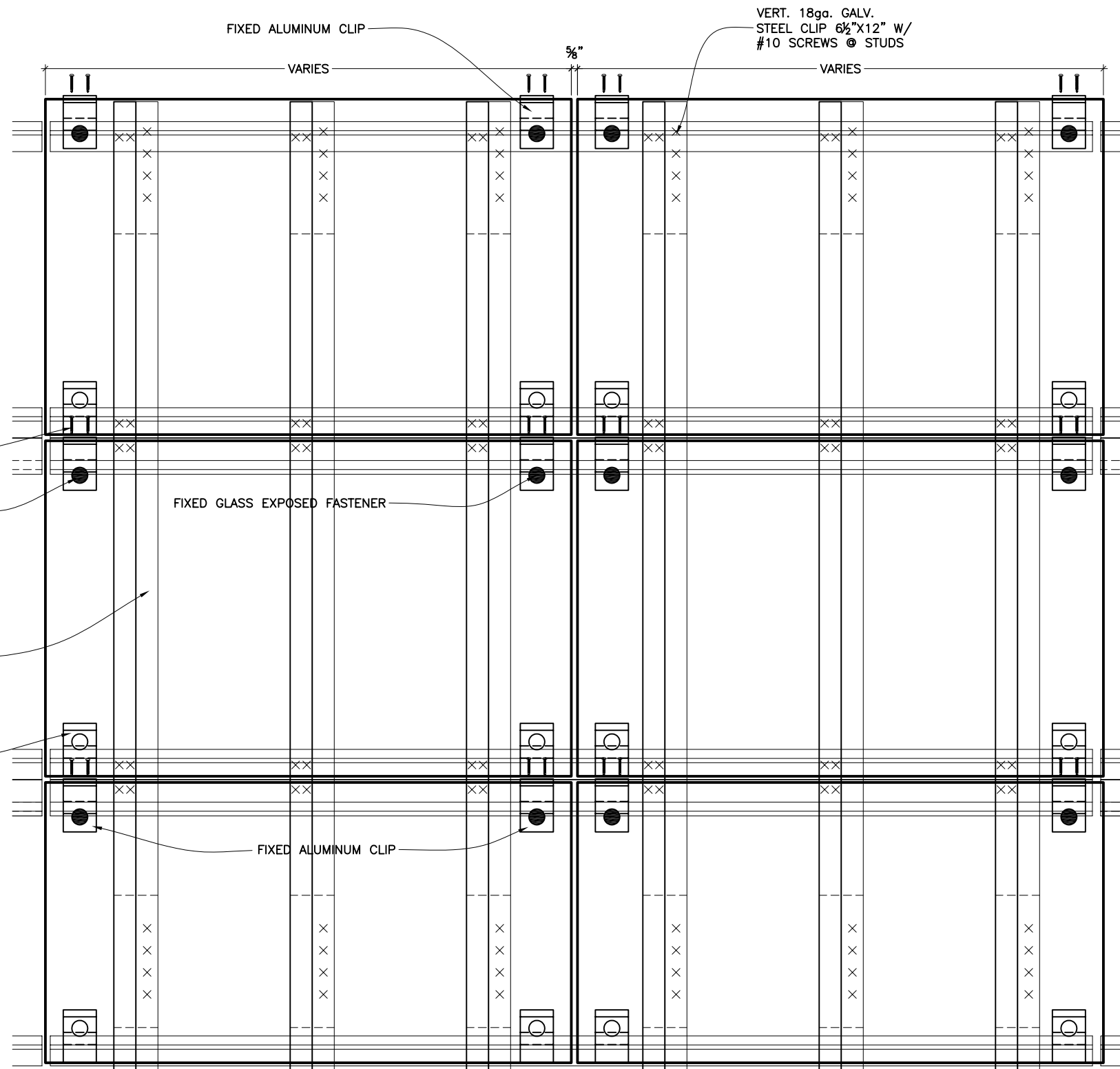
VERT. 18ga. GALV. STEEL SUBGIRT W/ #10 SCREWS @ STEEL CLIPS

4" WIDE ALUMINUM CLIP

EXTERIOR WALL CONSTRUCTION-SECTION

## NOTES ON SUBFRAMING:

1. SUBGIRT FRAMING LENGTH WILL BE MAXIMIZED IN ORDER TO MINIMIZE CUTTING. MAX SUBGIRT LENGTH 10'-0".
2. TO ALLOW FOR ADEQUATE EXPANSION, THE VERTICAL SUBGIRT MUST BE INTERRUPTED WITH A GAP APPROXIMATELY  $\frac{3}{4}$ ".
3. EACH SUBFRAMING CAN SPAN MAXIMUM 1 STOREY TO ALLOW FOR INTERSTOREY DRIFT.
4. THE JOINTS OF THE VERTICAL LOAD BEARING PROFILES MUST COINCIDE WITH THE HORIZONTAL JOINTS OF THE PANELS. SEE DIAGRAM TO RIGHT. **IMPORTANT:** DO NOT FASTEN PANEL ALONG TWO SEPARATE VERTICAL SUBGIRTS. ALLOW FOR ADEQUATE EXPANSION. FASTEN BETWEEN THE BOTTOM & TOP OF CONTINUOUS VERTICAL SUBGIRTS.



NOT TO SCALE



**KEITH PANEL SYSTEMS CO., LTD.**  
 Architectural Building Envelope Solutions  
 SUITE 1-40 GOSTICK PLACE phone: (604) 987-4499  
 NORTH VANCOUVER, BC fax: (604) 980-4756  
 V7M 3G3 http://www.keithpanel.com email: mail@keithpanel.com

This drawing, its prints and all parts thereof are, and shall remain the sole property of Keith Panel Systems Co., Ltd. (A PPS building envelope system) and may not be reproduced or used for any purpose without written consent.

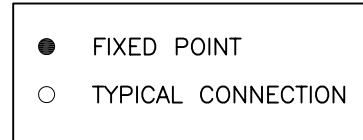
dwg. title:  
**GLASS SUBFRAMING LAYOUT AND NOTES**

dwg. no:  
**1.3**

# KPS RS GLASS TYPICAL GLASS PANEL LAYOUT AND NOTES

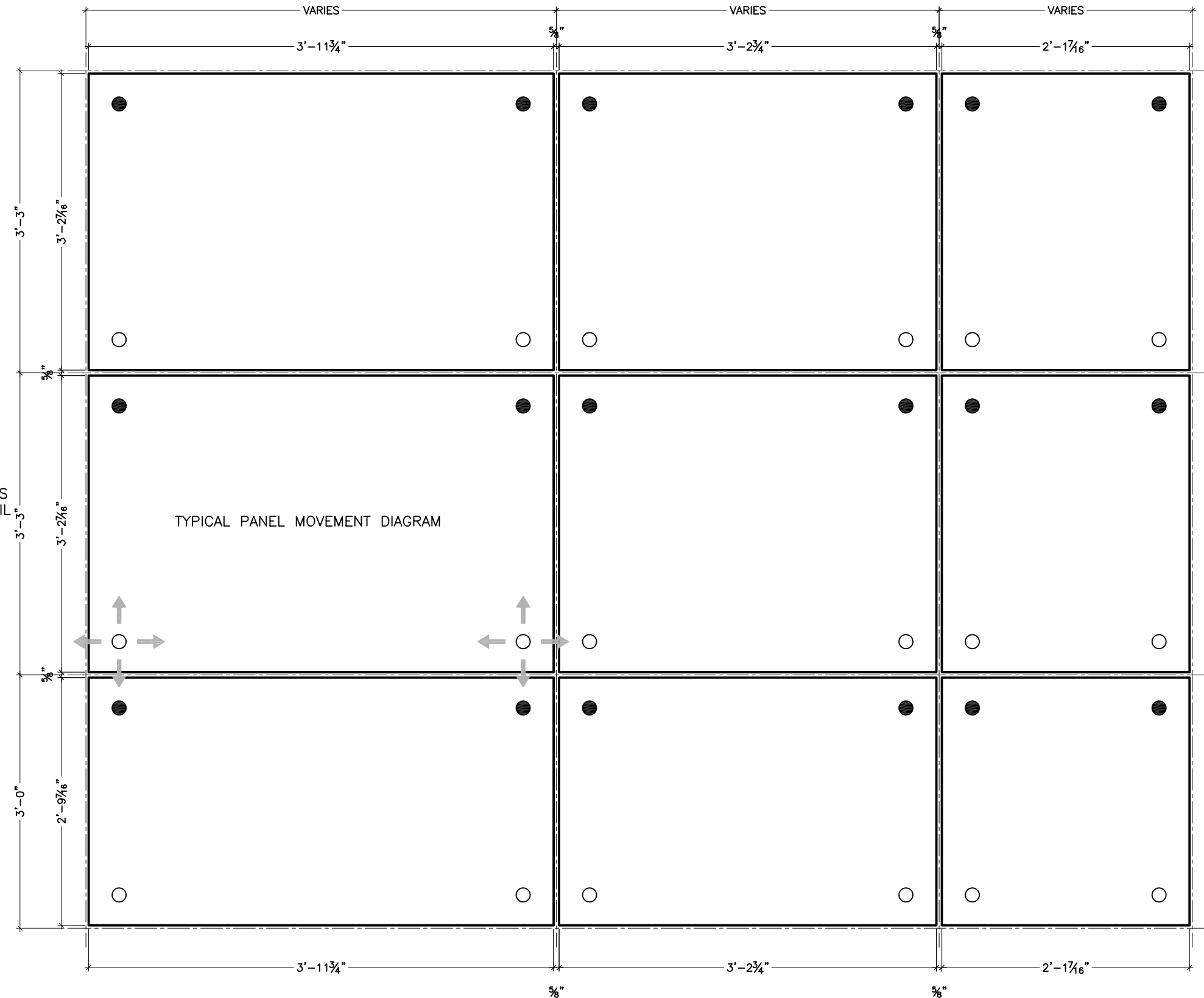
## FIXED POINTS VERSUS EXPANSION POINTS:

1. THE FIXING OF GLASS PANELS TO ALUMINUM SUBFRAMING REQUIRES 4 FIXED POINTS PER PANEL AND 2 FIXED CLIPS.
2. MAXIMUM PANEL SIZE 4'-7" X 4'-9".
3. FIXED POINT IS ATTACHED TO FIXED CLIP.
4. THE FIXED POINT WILL BE TYPICALLY POSITIONED AS SHOWN ON THE DIAGRAM TO THE RIGHT.



## CONNECTION NOTES:

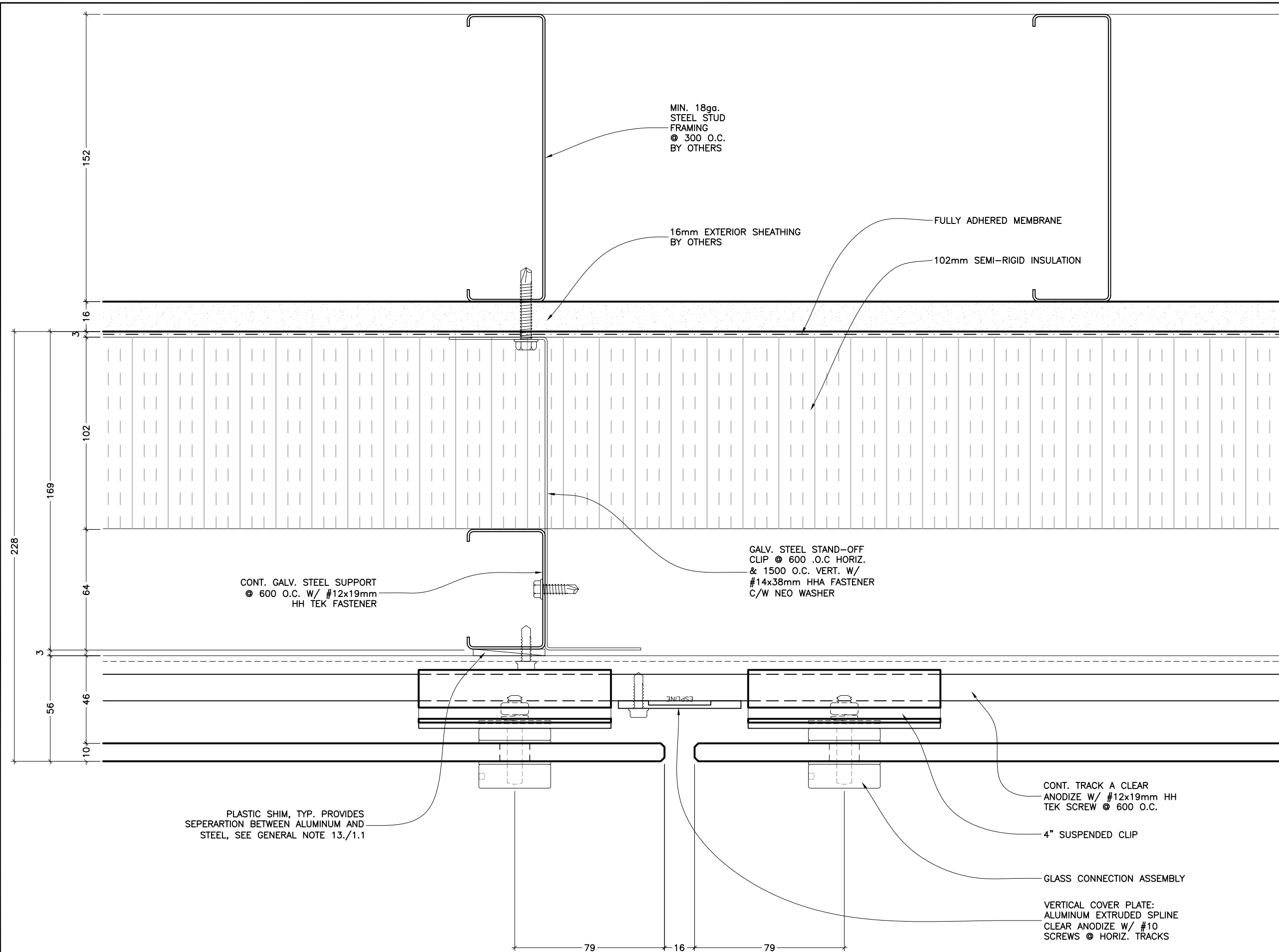
1. ALL GLASS ATTACHMENT ASSEMBLIES ARE THE SAME
2. TOP ATTACHMENTS – CLIPS ARE RESTING ON TRACKS
3. FIXED POINT – CLIP MECHANICALLY FASTENED TO RAIL W/ 2-#10 SCREWS
4. BOTTOM ATTACHMENTS – SUSPENDED ABOVE RAILS



**KEITH PANEL SYSTEMS CO., LTD.**  
 Architectural Building Envelope Solutions  
 SUITE 1-40 GOSTICK PLACE phone: (604) 987-4499  
 NORTH VANCOUVER, BC fax: (604) 980-4756  
 V7M 3G3 http://www.keithpanel.com email: mail@keithpanel.com

This drawing, its prints and all parts thereof are, and shall remain the sole property of Keith Panel Systems Co., Ltd. (A PPS building envelope system) and may not be reproduced or used for any purpose without written consent.

M:\Marketing\Generic\_Details\KPS\_Generic\RS\_Glass\_System\_Details - Generic.dwg



**1** VERTICAL JOINT, ATTACHMENT DETAIL  
 G1 SCALE 1:2 ARCH. REF.: N/A

ALL DIMENSIONS TO BE VERIFIED ON SITE.

NO.	DATE	DESCRIPTION

**KPS**  
**KEITH PANEL SYSTEMS CO., LTD.**  
 Architectural Building Envelope Solutions  
 SUITE 240 GOSTICK PLACE phone: (604) 967-4499  
 NORTH VANCOUVER, BC fax: (604) 967-4742  
 V7M 3G3 http://www.keithpanel.com email: mail@keithpanel.com

This drawing, its prints and all parts thereof are, and shall remain the sole property of Keith Panel Systems Co., Ltd. (A PPS building envelope system) and may not be reproduced or used for any purpose without written consent.

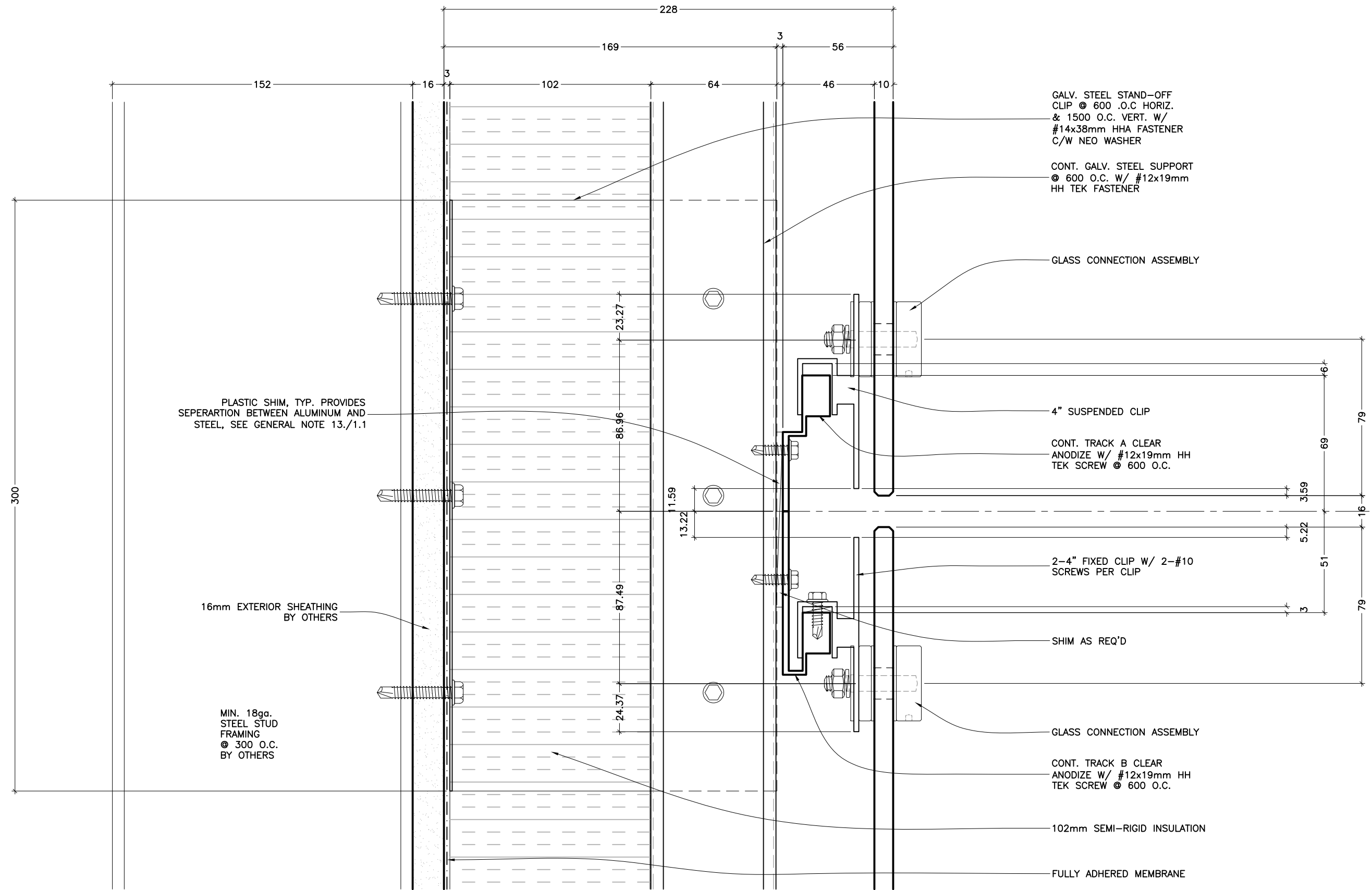
project:  
**RS GLASS SYSTEM**

project location:

date:  
 scale: **AS NOTED**  
 drawn by: **HL**  
 project no:

dwg. title:  
**TYPICAL PLAN DETAIL**

dwg. no:  
**G1**



ALL DIMENSIONS TO BE VERIFIED ON SITE.

NO.	DATE	DESCRIPTION

**KPS**  
**KEITH PANEL SYSTEMS CO., LTD.**  
 Architectural Building Envelope Solutions  
 SUITE 2-40 GOSTICK PLACE    phone: (604) 967-4499  
 NORTH VANCOUVER, BC    fax: (604) 967-4742  
 V7M 3G3    http://www.keithpanel.com    email: mail@keithpanel.com

This drawing, its prints and all parts thereof are, and shall remain the sole property of Keith Panel Systems Co., Ltd. (A PPS building envelope system) and may not be reproduced or used for any purpose without written consent.

project: **RS GLASS SYSTEM**

project location: \_\_\_\_\_

date: \_\_\_\_\_  
 scale: **AS NOTED**  
 drawn by: **HL**  
 project no: \_\_\_\_\_

dwg. title: **TYPICAL SECTION DETAIL**

dwg. no: **G2**

**1 HORIZONTAL JOINT, ATTACHMENT DETAIL**  
 G2 SCALE 1:2 ARCH. REF.: N/A