

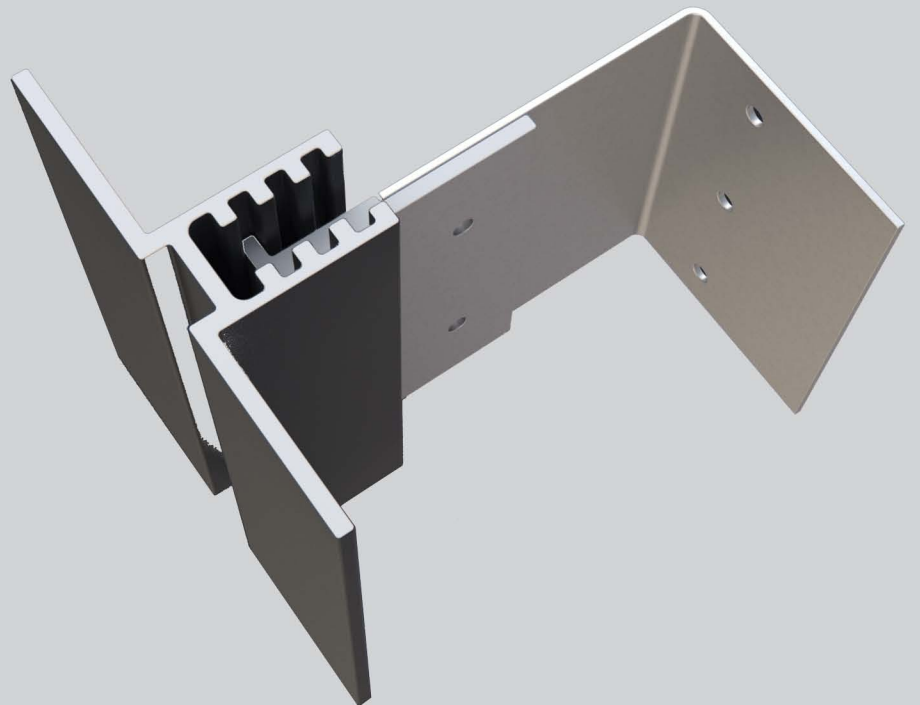
Thermal Spacer for High Performance Architectural Facades

T H E R M A

S M A R T

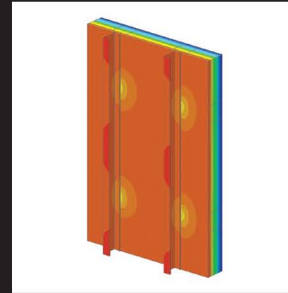
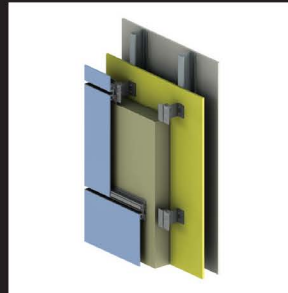
C L I P

3 . 0



# KPS ThermaSmart Clip 3.0

The KPS ThermaSmart Clip 3.0 provides intermittent structural attachment for the installation of exterior insulated Rainscreen wall assemblies. Its use greatly improves the thermal performance of the building envelope. The clip consists of a low conductivity stainless steel L-angle base combined with an extruded aluminum face bracket that is adjustable to allow for precise alignment of the panel system. The base is available in various depths to suit the required insulation thickness. KPS is able to design the clip spacing to meet the effective R-value target for the wall while also addressing the structural requirement to support the load of the panel system being installed.



Temperature Index  
1 = indoor temperature  
0 = outdoor temperature



## Load Data

The KPS ThermaSmart Clip 3.0 has been tested for its load carrying capabilities.

### Lap Joint Shear Test

This test examines the strength of the connection between the L-angle base and the connector to the front bracket.

Test Method: AISI Standard S905-13, *Test Standard for Cold-Formed Steel Connections*

**Dead Load: 2454.0 lbs (10915.7N) per clip**

### Example Max Live Load Calculation\*

Steel stud framed wall: 18 gauge, 3-5/8" @ 16" o.c.

Clip depth: 4"

Mineral wool insulation: 4" (nominal R4.2 per inch)

Clip Spacing: 16" horizontally / 50" vertically

Wind Load: 40 PSF

This scenario will achieve  
Effective R-18.2

**Live Load Pull out Strength: 233 lbs per clip** (max tributary area 4 SF)

*\*Project applications are unique. KPS' Consulting Structural Engineer will ensure the clip design meets all structural load requirements.*

- Achieves compliance to ASHRAE 90.1, IECC, and NECB thermal performance standards for exterior wall construction
- High strength allows for increased clip spacing, further improving thermal performance
- Does not contain combustible components such as plastic or fiberglass
- Available in 2" to 8" depths to match common mineral wool insulation thicknesses
- Allows for 1/2" of depth adjustment without shimming

KPS ThermaSmart Clip 3.0 performance evaluation by Morrison Hershfield



keithpanel.com

Phone 604.987.4499  
Fax 604.987.4742  
mail@keithpanel.com

**Keith Panel Systems**  
Suite No. 2-40 Gostick Place  
North Vancouver, BC  
Canada V7M 3G3

**KPS**  
KEITH PANEL SYSTEMS