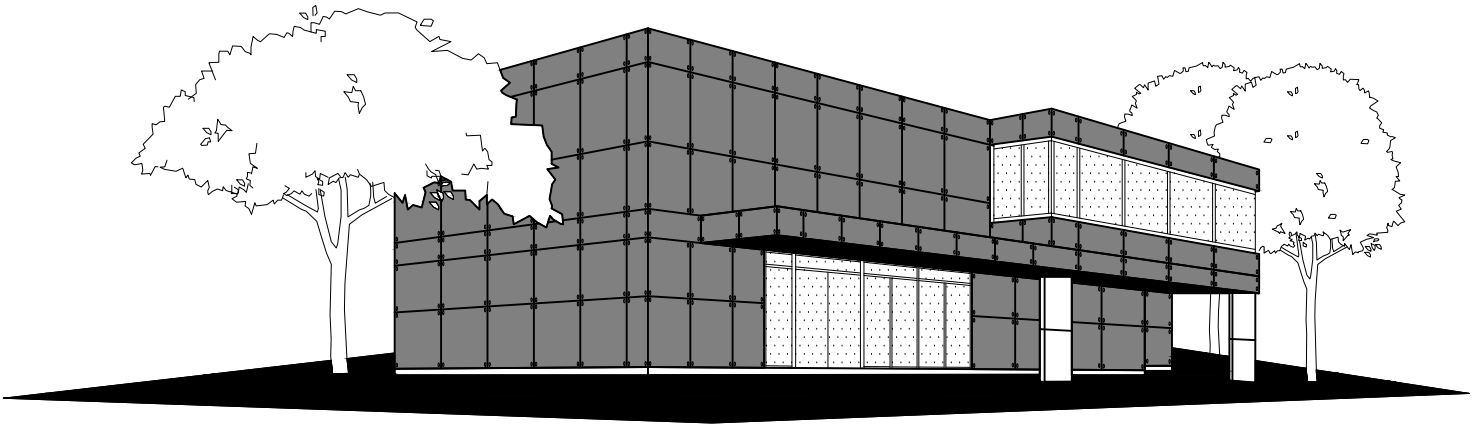


# KEITH PANEL SYSTEMS

---

## D E T A I L S



---

### SYSTEM -RS GLASS-

# KEITH PANEL SYSTEMS

## SYSTEM DETAILS

**\*\*THIS MANUAL IS PROVIDED FOR INFORMATION PURPOSES ONLY\*\***

THE DETAILS SHOWN IN THIS DRAWING PACKAGE ARE NOT INTENDED TO REPLACE PROJECT SPECIFIC SUBMITTAL DRAWINGS, AND ARE SUBJECT TO CHANGE AT ANY TIME. ANY USE OF THESE DRAWINGS OR INSTALLATION OF THE SYSTEM SHOWN IN THESE DRAWINGS SHALL EXCLUSIVELY BE AT THE RISK OF THE PARTIES INVOLVED IN SUCH USE OR INSTALLATION, AND EACH OF SUCH PARTIES ASSUMES ANY AND ALL SUCH RISKS. BY USING THESE DRAWINGS/DETAILS IN ANY WAY, YOU ACKNOWLEDGE AND AGREE THAT YOU HAVE READ AND UNDERSTAND THIS LEGAL NOTICE.

### GENERAL NOTES

1. KPS IS NOT RESPONSIBLE FOR INFORMATION SHOWN ON ALL DETAILS BEYOND KPS SPECIFIC SCOPE OF WORK.
2. DETAILS OF ADJACENT WORK ARE SHOWN FOR COMPLETENESS ONLY. THE PROJECT ARCHITECT/ PROJECT ENGINEER/ THE CONTRACTOR SUPPLYING AND/OR INSTALLING THE STRUCTURAL SUPPORT IS RESPONSIBLE FOR ITS DESIGN/ INSTALLATION TO ACCOMMODATE ALL LOADS IMPOSED UPON IT BY OUR PRODUCTS.
3. OUR ENGINEERING IS LIMITED TO THE LOAD CARRYING COMPONENTS OF THE PANEL SYSTEM AND ITS FASTENERS SHOWN ON THESE SHOP DRAWINGS.
4. OUR COMPANY POLICY IS TO IMPROVE AS WE PROGRESS, THEREFORE, THE DETAILS IN THIS MANUAL MAY IMPROVE OR CHANGE AS APPROVED BY CONSULTANTS.
5. THESE DRAWINGS SHALL REMAIN THE PROPERTY OF KEITH PANEL SYSTEMS CO. LTD. THIS DOCUMENT SHALL NOT BE REPRODUCED OR USED FOR ADDITIONS OR ALTERATIONS WITHOUT THE PRIOR WRITTEN CONSENT OF KEITH PANEL SYSTEMS CO. LTD.
6. JOINT CAULKING: IF REQUIRED. DOW CWS RECOMMENDED. (NOTE SHOP DRAWINGS FOR LOCATIONS.)
7. WEEP HOLES: 1/4" DIAMETER HOLES. 2 HOLES—ONE AT EACH END ON HORIZONTAL AND VERTICAL PANELS.
8. INTERACTION BETWEEN DISSIMILAR MATERIALS (IE. ALUMINUM TO GALVANIZED STEEL) MUST BE SEPARATED (IE. SHIMS OR SEPARATION TAPE).
9. ADJACENT SUBTRADES TO LEAVE MINIMUM 6" FLAP OF AIR/VAPOUR BARRIER TO TIE IN WITH KPS. SIMILIARLY KPS WILL LEAVE 6" FLAP TO TIE IN WITH ADJACENT SUBTRADES WHICHEVER COMES FIRST.

# KEITH PANEL SYSTEMS

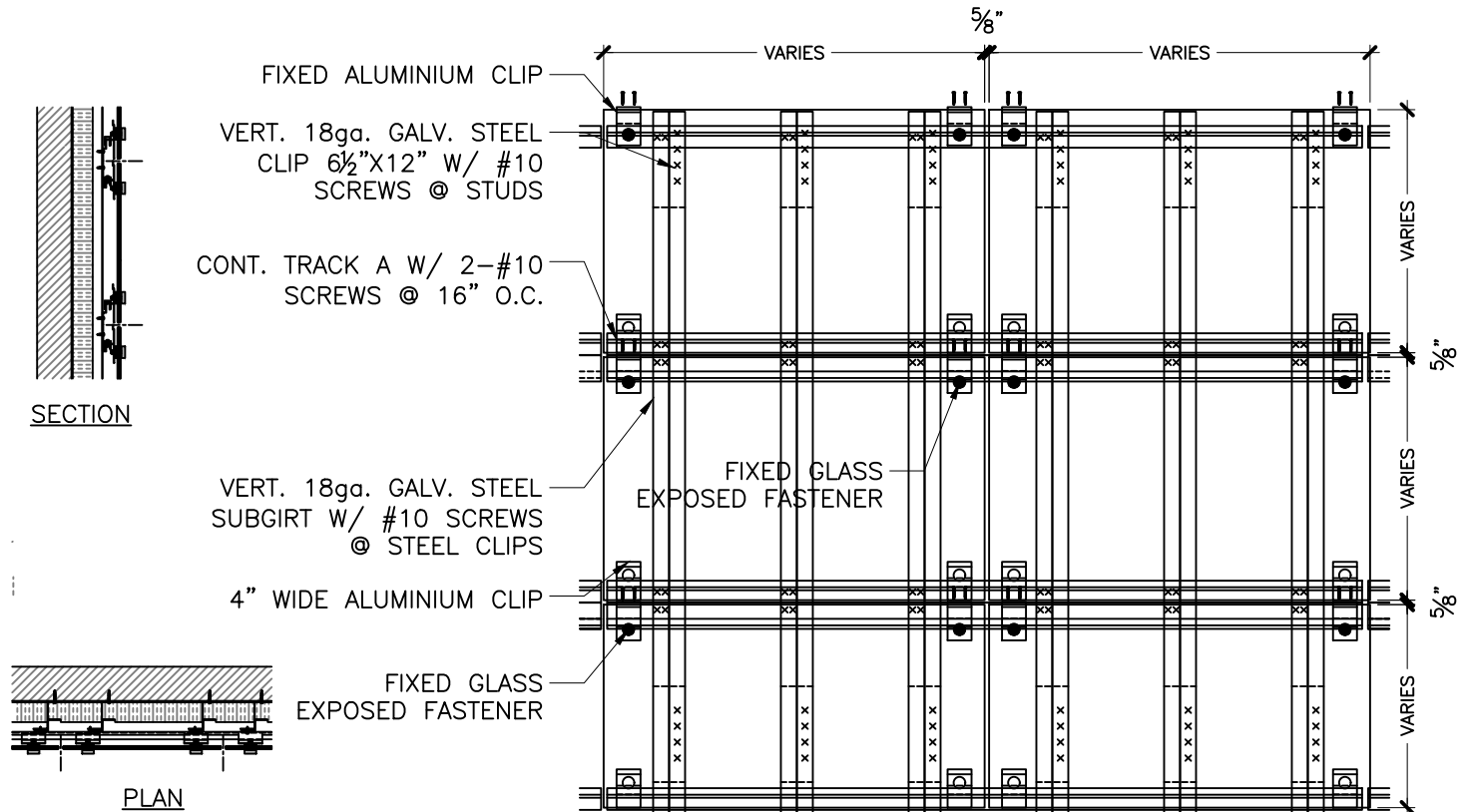
## SYSTEM DETAILS

### SEQUENCE OF INSTALLATION:

1. APPLY MEMBRANE.
2. FASTEN VERTICAL STEEL CLIPS.
3. INSULATION (PINED IF NECESSARY).
4. FASTEN PRIMARY @ TOP PANEL TRACK AND HANG ON AND FIX CLIPS TO THE TRACK.
5. FASTEN SECOND CONTINUOUS HORIZONTAL TRACK.
6. CONNECT PANELS AS SHOWN IN DETAILS AND IN ACCORDANCE W/ ENGINEERS SPECS.

### NOTES ON SUBFRAMING:

1. SUBGIRT FRAMING LENGTH WILL BE MAXIMIZED IN ORDER TO MINIMIZE CUTTING. MAX. SUBGIRT LENGTH 10'-0"
2. TO ALLOW FOR ADEQUATE EXPANSION, THE VERTICAL SUBGIRT MUST BE INTERRUPTED WITH A GAP APPROXIMATELY  $\frac{3}{4}$ ".
3. EACH SUBFRAMING CAN SPAN MAXIMUM 1 STOREY TO ALLOW FOR INTERSTOREY DRIFT.
4. THE JOINTS OF THE VERTICAL LOAD BEARING PROFILES MUST COINCIDE WITH THE HORIZONTAL JOINTS OF THE PANELS. SEE DIAGRAM TO RIGHT. **IMPORTANT:** DO NOT FASTEN PANEL ALONG TWO SEPARATE VERTICAL SUBGIRTS. ALLOW FOR ADEQUATE EXPANSION. FASTEN BETWEEN THE BOTTOM & TOP OF CONTINUOUS VERTICAL SUBGIRTS.



# KEITH PANEL SYSTEMS

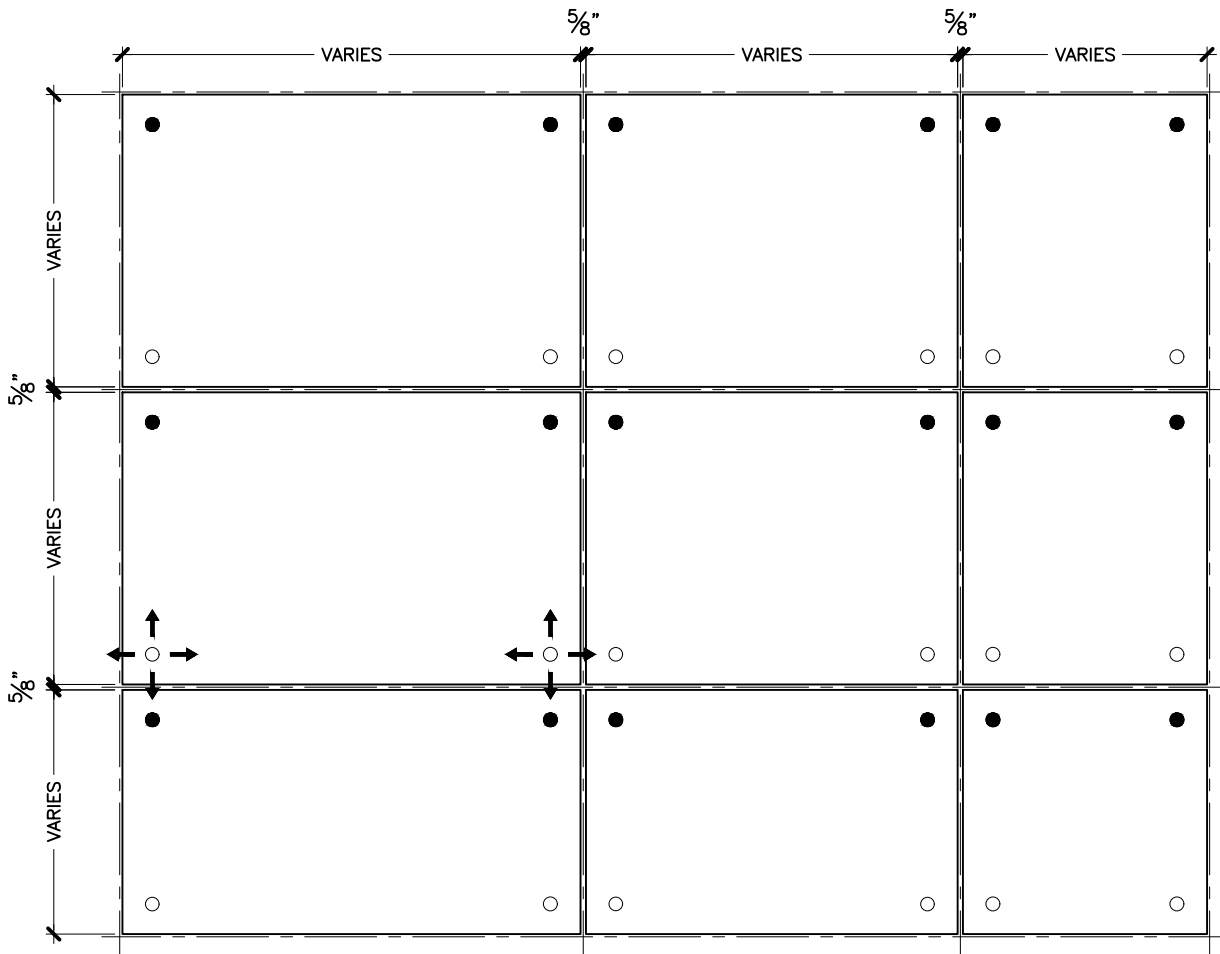
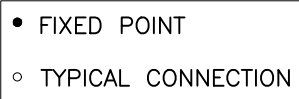
## SYSTEM DETAILS

### FIXED POINTS VERSUS EXPANSION POINTS:

1. THE FIXING OF GLASS PANELS TO ALUMINUM SUBFRAMING REQUIRES 4 FIXED POINTS PER PANEL AND 2 FIXED CLIPS.
2. FIXED POINT IS ATTACHED TO FIXED CLIP.
3. THE FIXED POINT WILL BE TYPICALLY POSITIONED AS SHOWN ON THE DIAGRAM TO THE RIGHT.

### CONNECTION NOTES:

1. ALL GLASS ATTACHMENT ASSEMBLIES ARE THE SAME.
2. TOP ATTACHMENTS – CLIPS ARE RESTING ON TRACKS.
3. FIXED POINT – CLIP MECHANICALLY FASTENED TO RAIL W/ 2-#10 SCREWS
4. BOTTOM ATTACHMENTS – SUSPENDED ABOVE RAILS.



KPS\_GENERIC\_2\_MOD\_PC

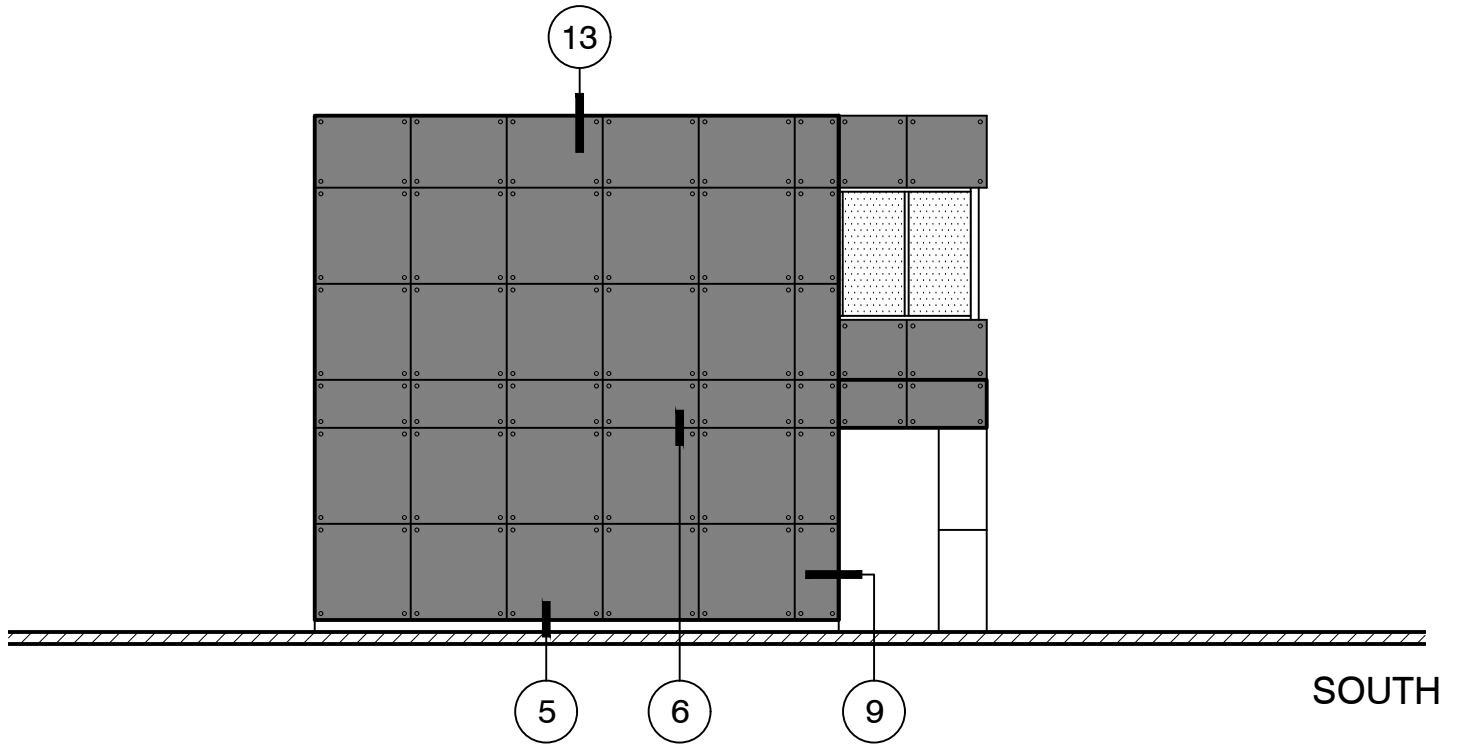
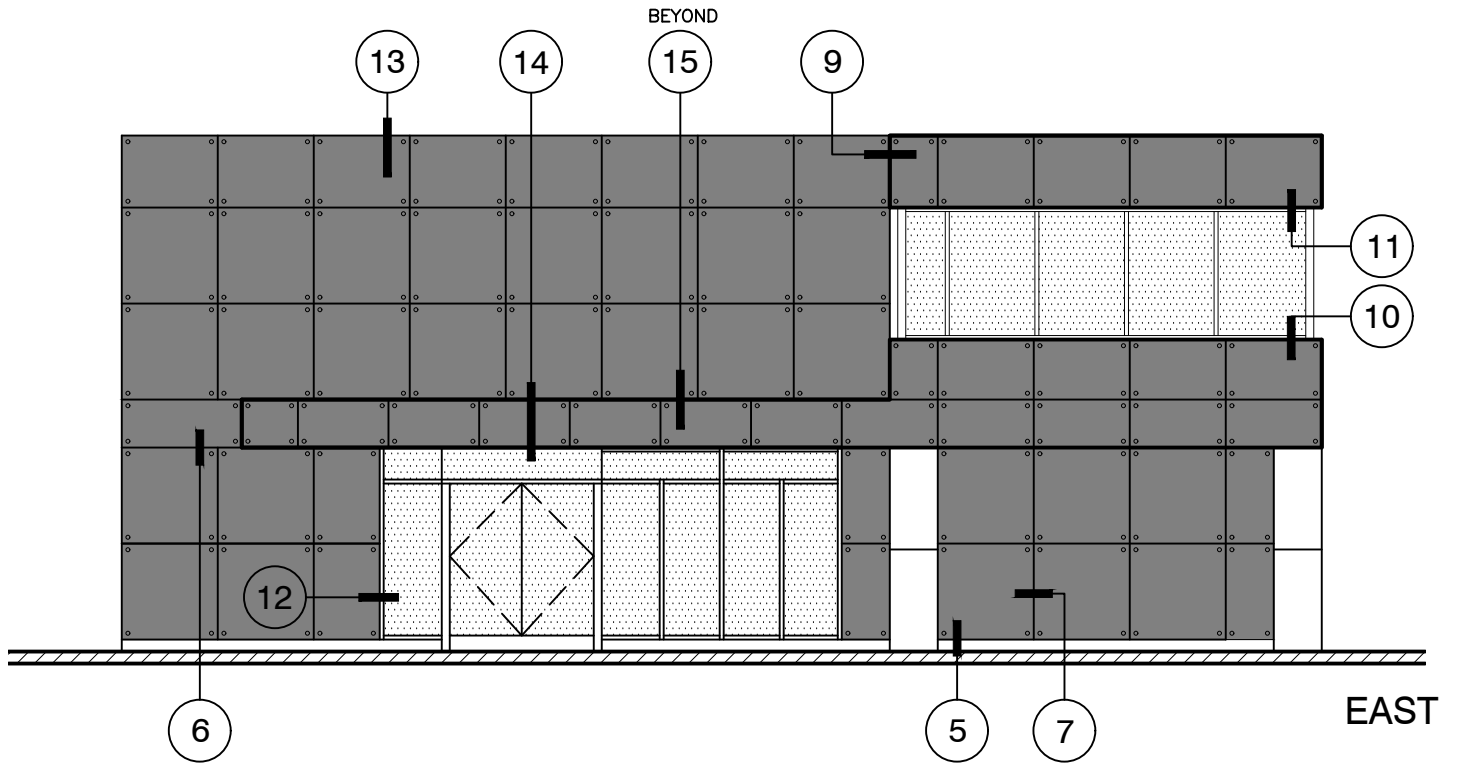


## TYPICAL GLASS PANEL LAYOUT & NOTES

2 OF 15

# KEITH PANEL SYSTEMS

SYSTEM DETAILS



KPS\_GENERIC\_2\_MOD\_PC

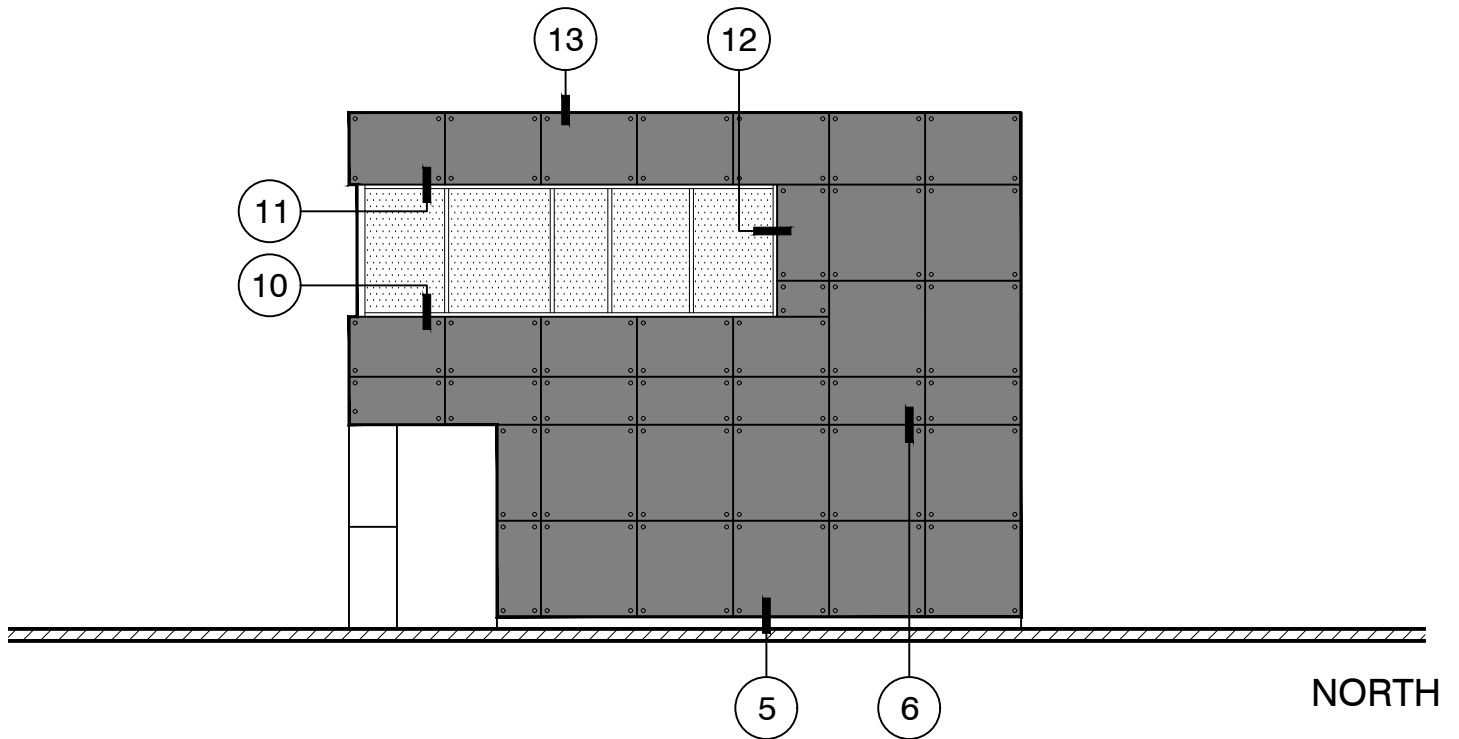
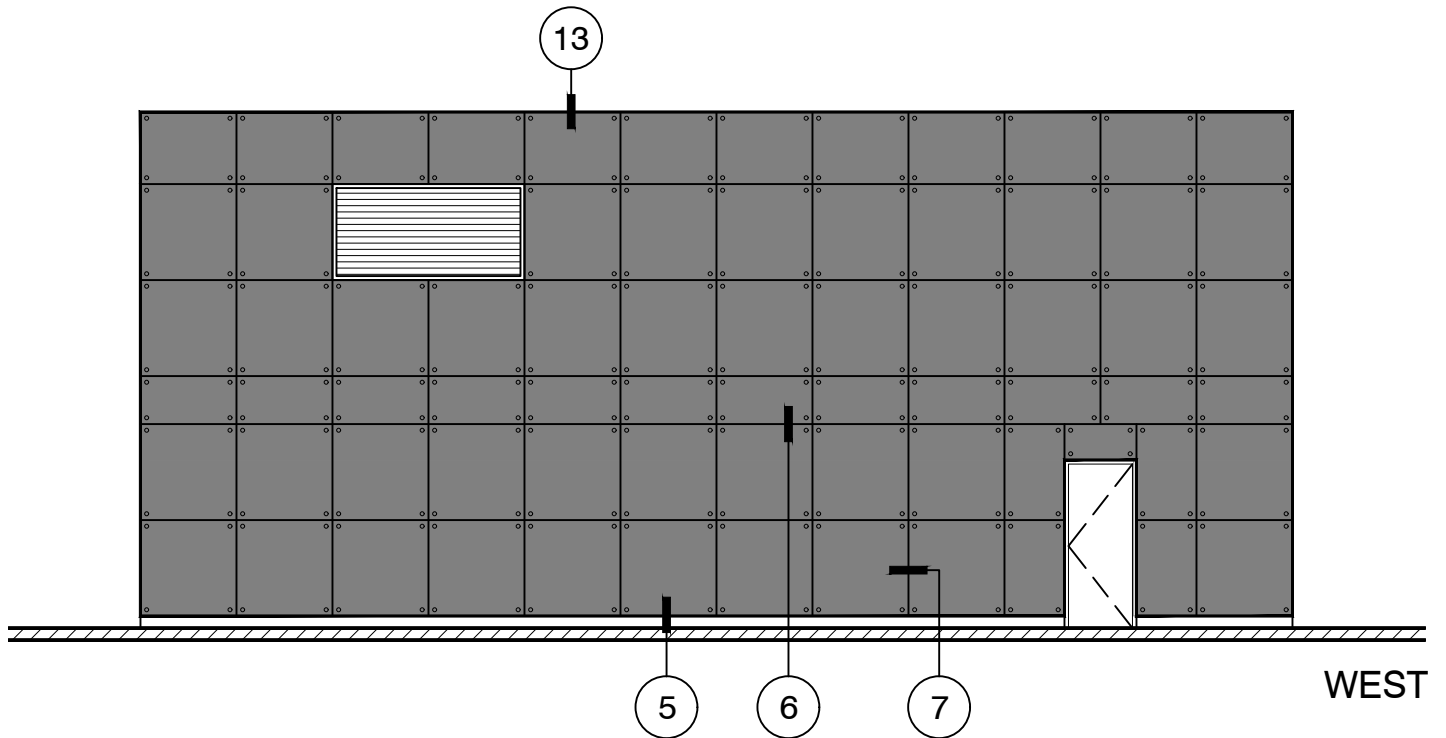


EAST AND SOUTH ELEVATIONS

3 OF 15

# KEITH PANEL SYSTEMS

SYSTEM DETAILS



KPS\_GENERIC\_2\_MOD\_PC

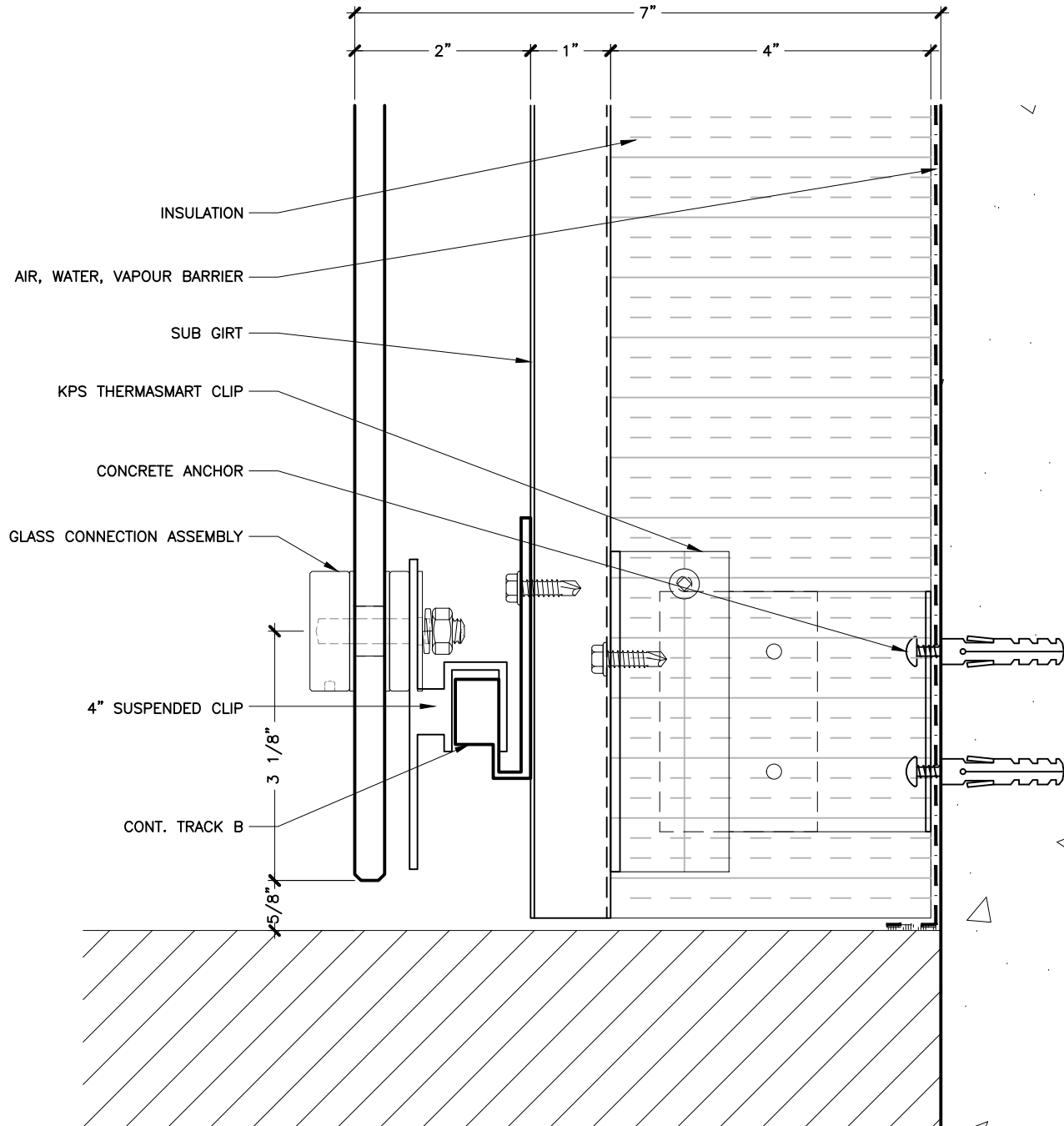


WEST AND NORTH ELEVATIONS

4 OF 15

# KEITH PANEL SYSTEMS

## SYSTEM DETAILS

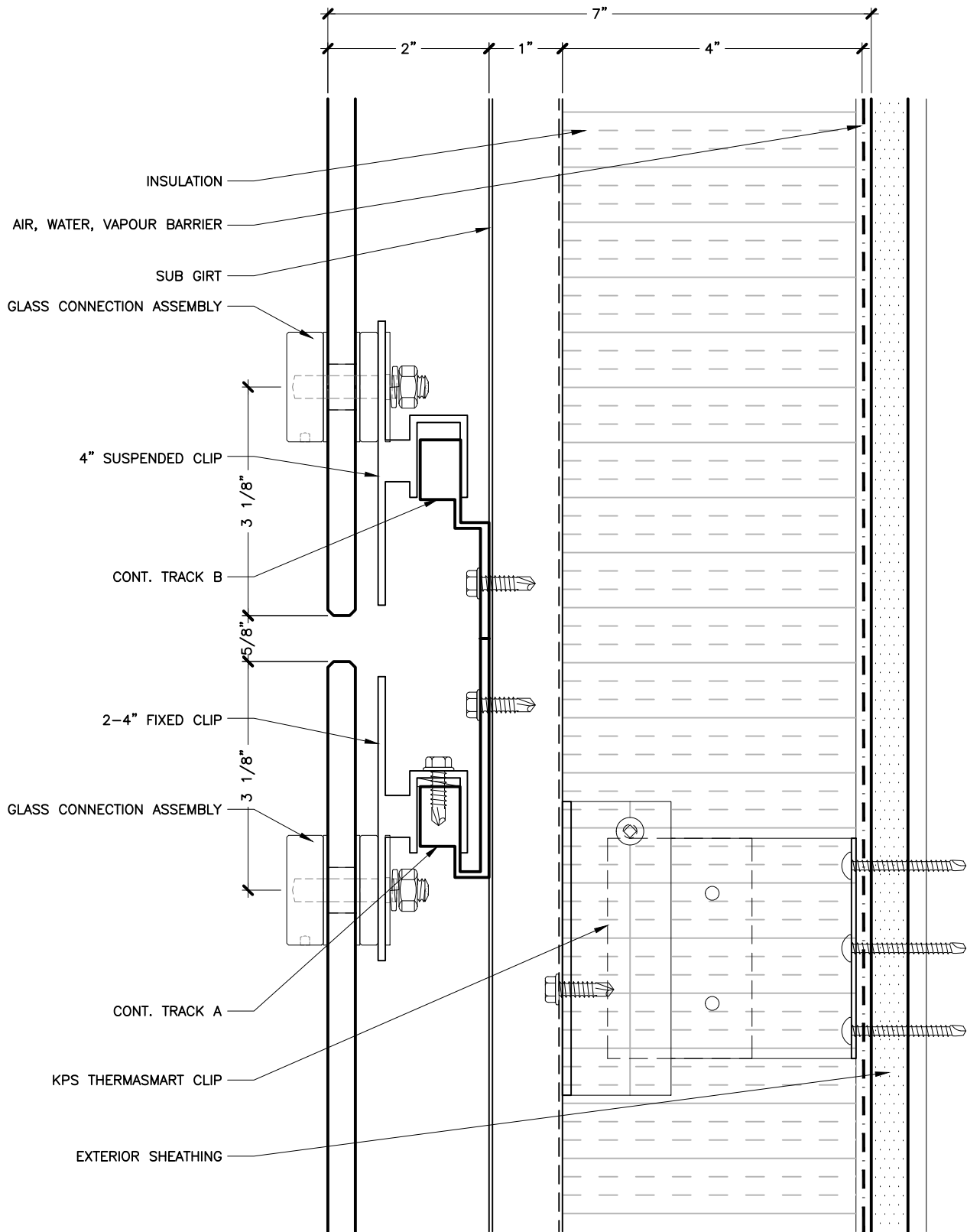


## PANEL SILL AT FINISHED GRADE/BALCONY

5 OF 15

# KEITH PANEL SYSTEMS

## SYSTEM DETAILS



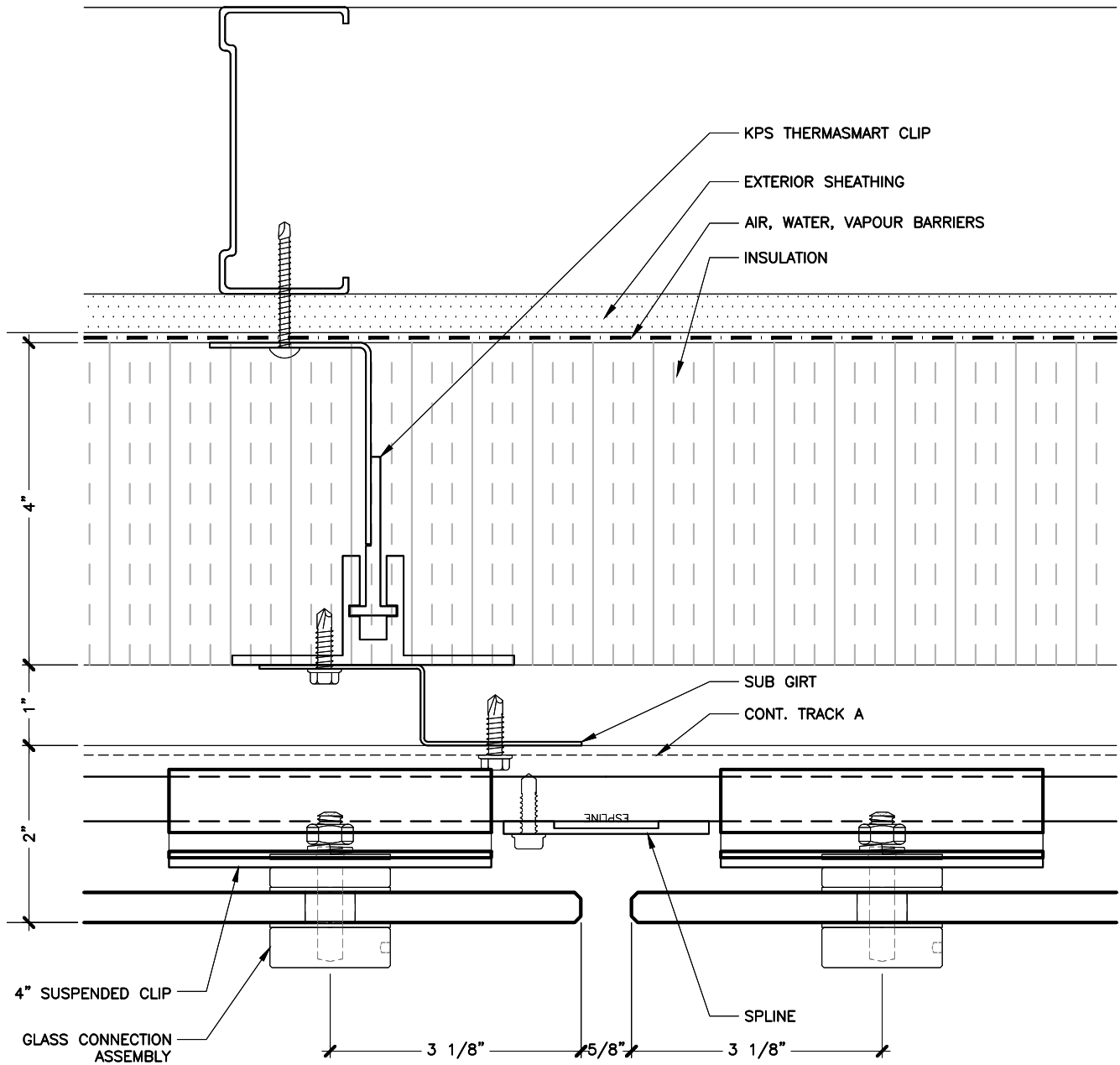
## HORIZONTAL JOINT

6 OF 15



# KEITH PANEL SYSTEMS

## SYSTEM DETAILS

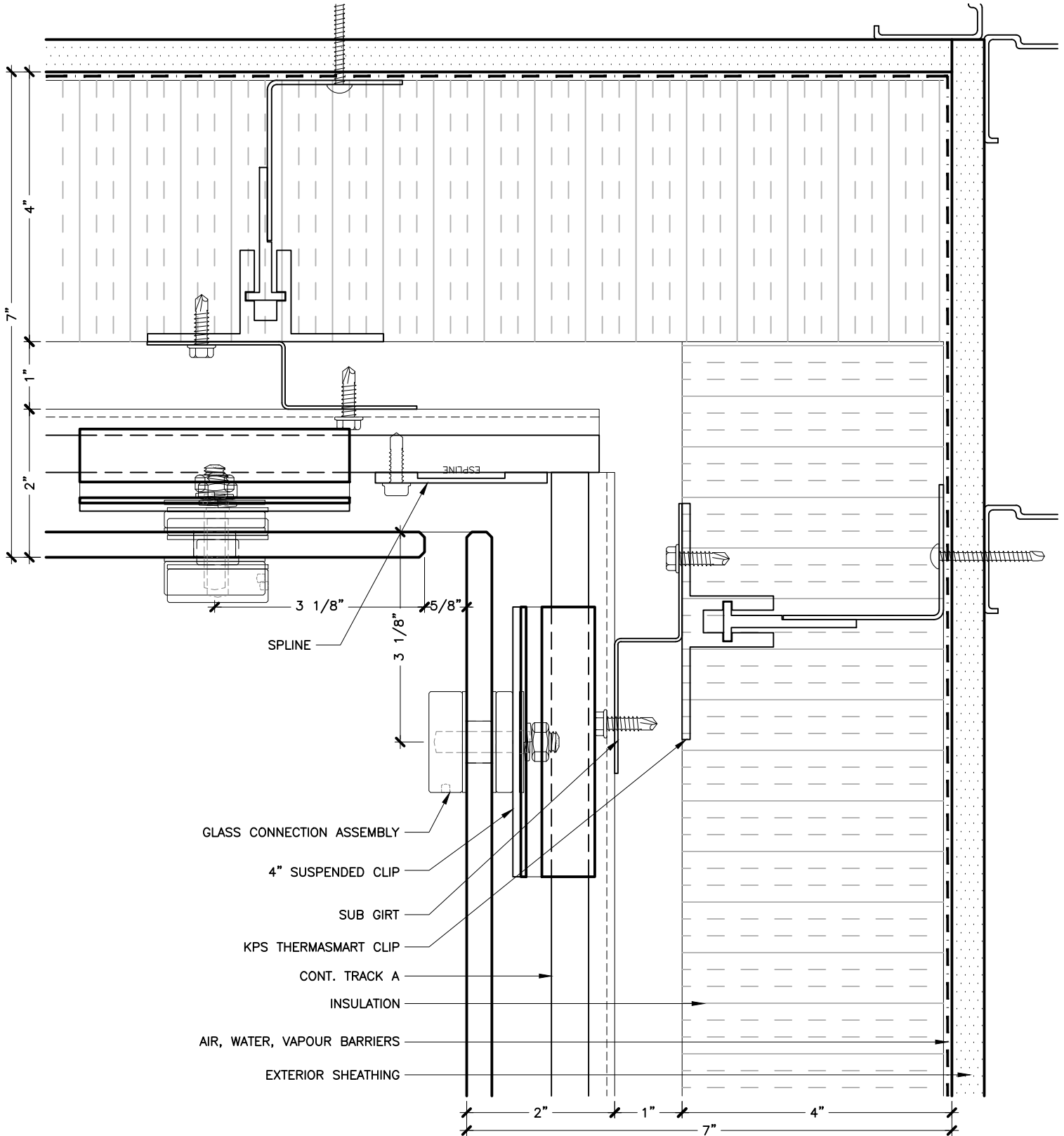


## VERTICAL JOINT

7 OF 15

# KEITH PANEL SYSTEMS

## SYSTEM DETAILS

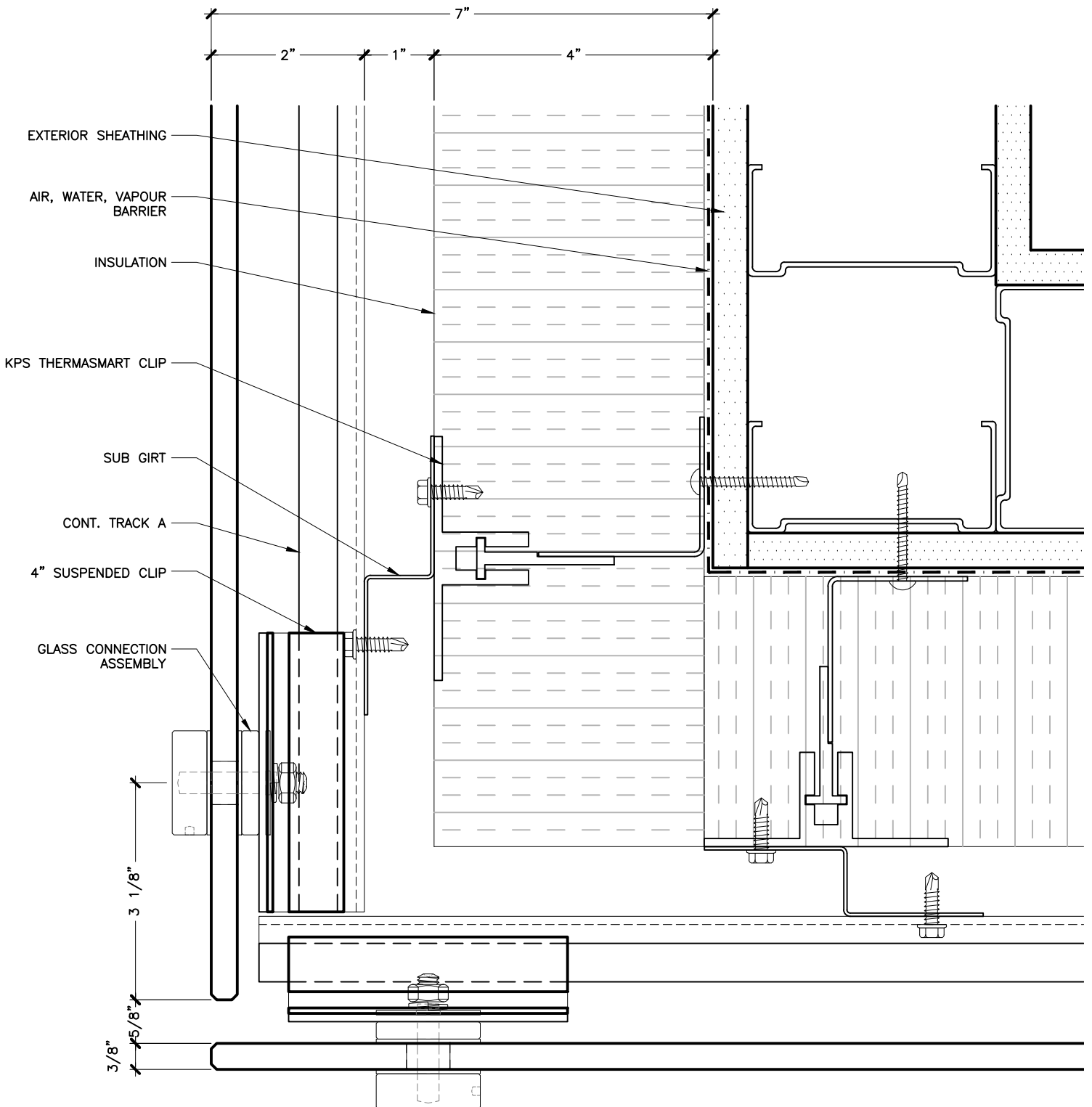


## PLAN DETAIL INSIDE CORNER

8 OF 15

# KEITH PANEL SYSTEMS

## SYSTEM DETAILS

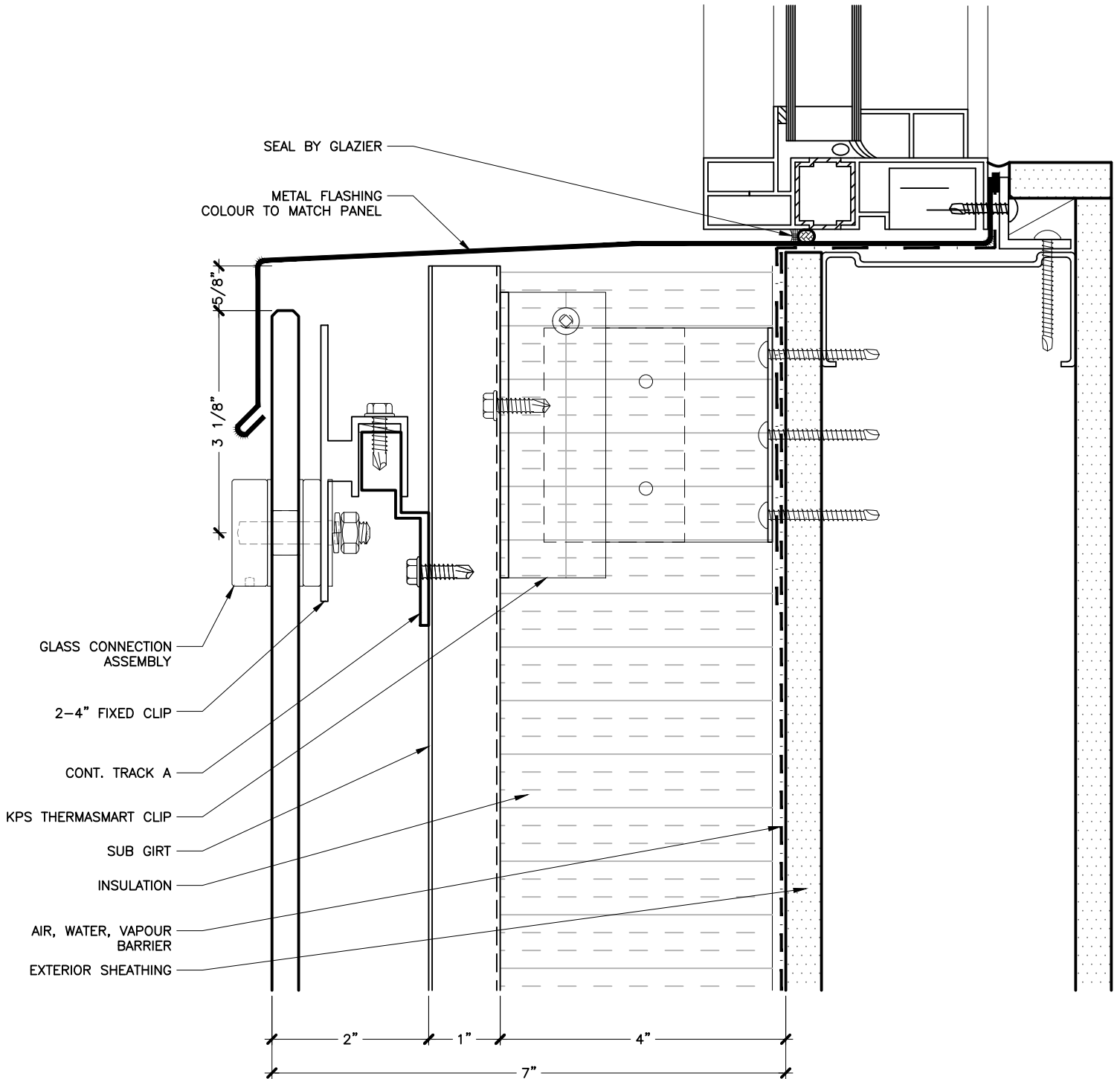


## PLAN DETAIL OUTSIDE CORNER

9 OF 15

# KEITH PANEL SYSTEMS

## SYSTEM DETAILS

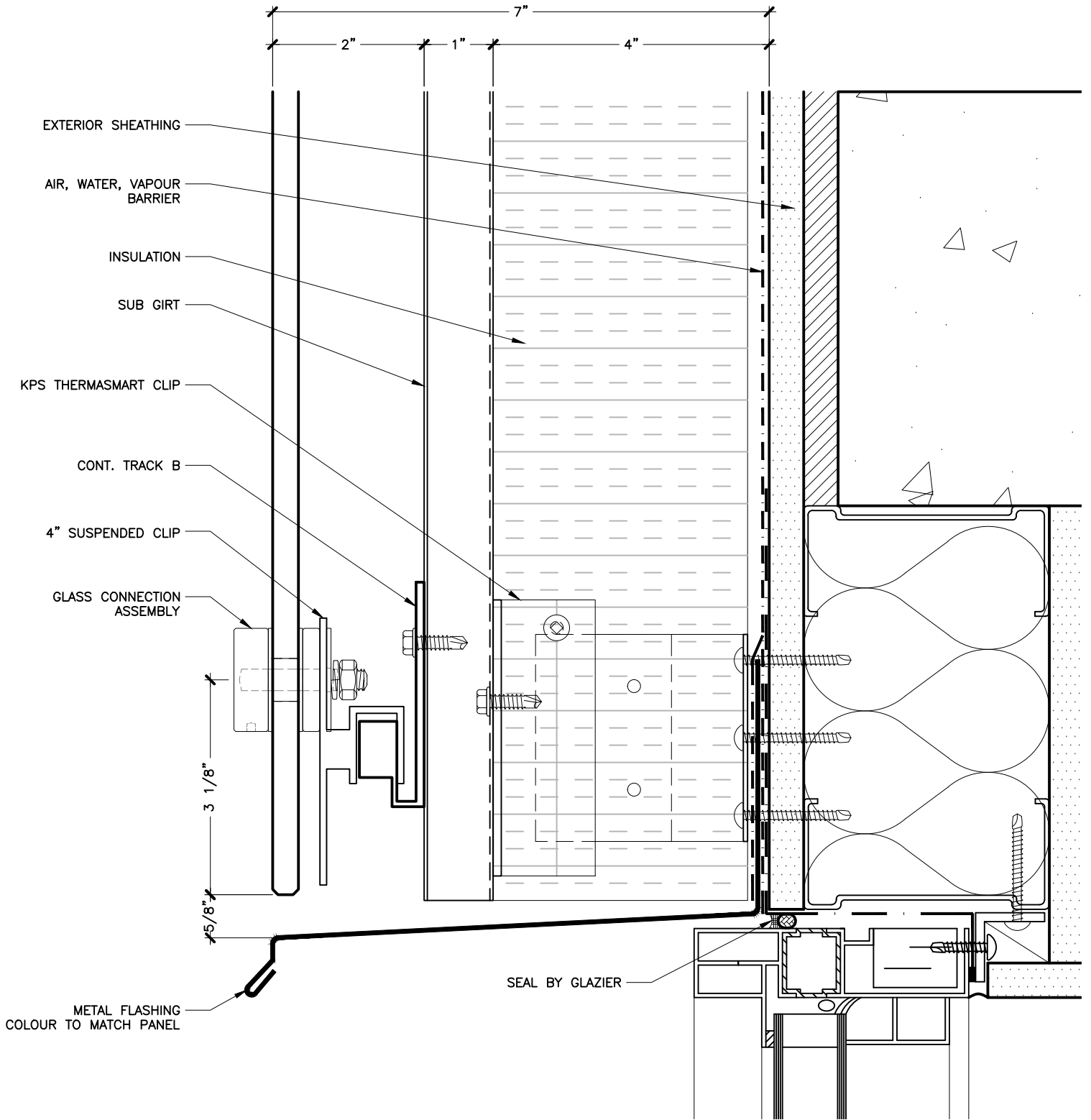


WINDOW SILL

10 OF 15

# KEITH PANEL SYSTEMS

## SYSTEM DETAILS

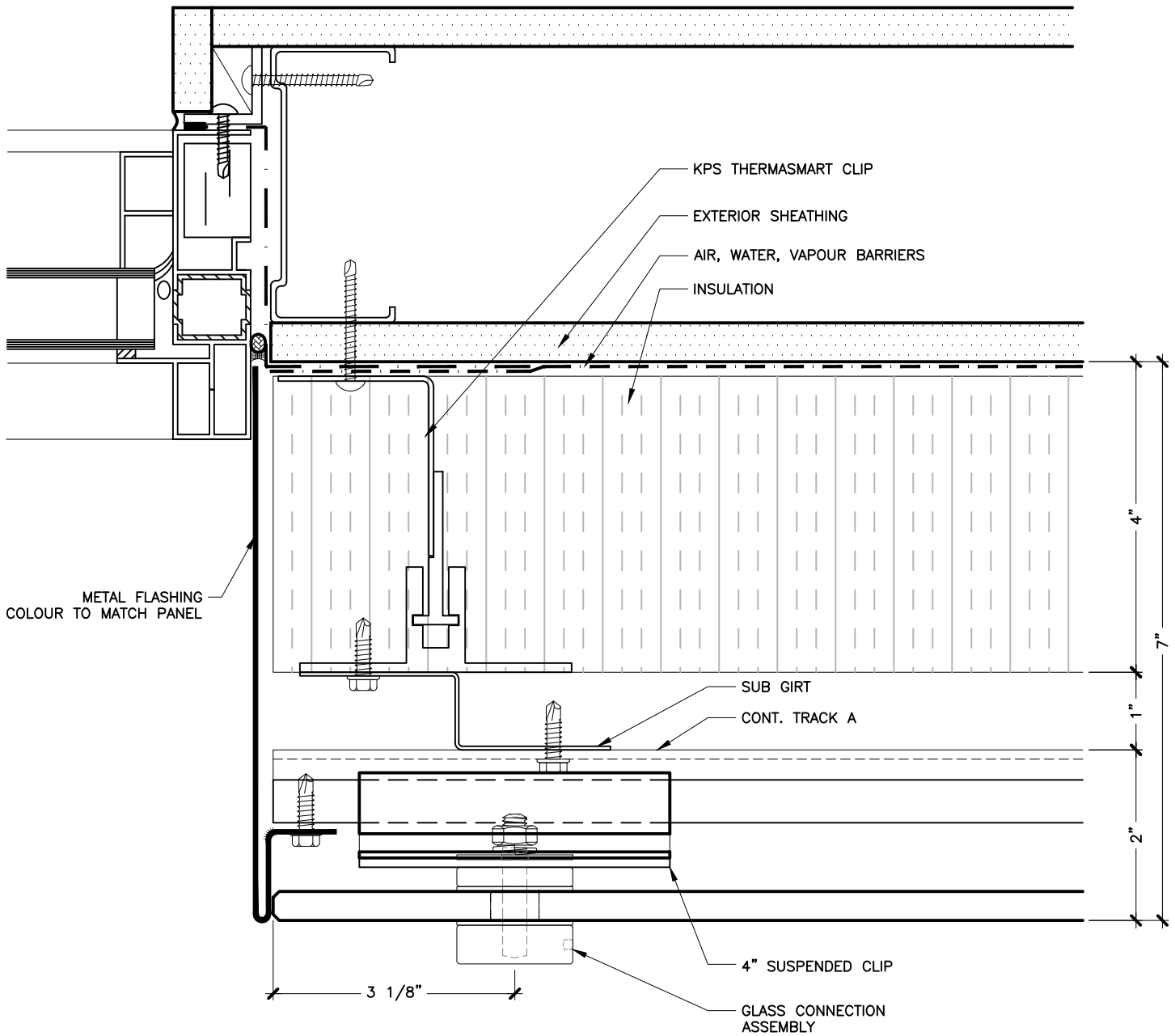


WINDOW HEAD

11 OF 15

# KEITH PANEL SYSTEMS

## SYSTEM DETAILS

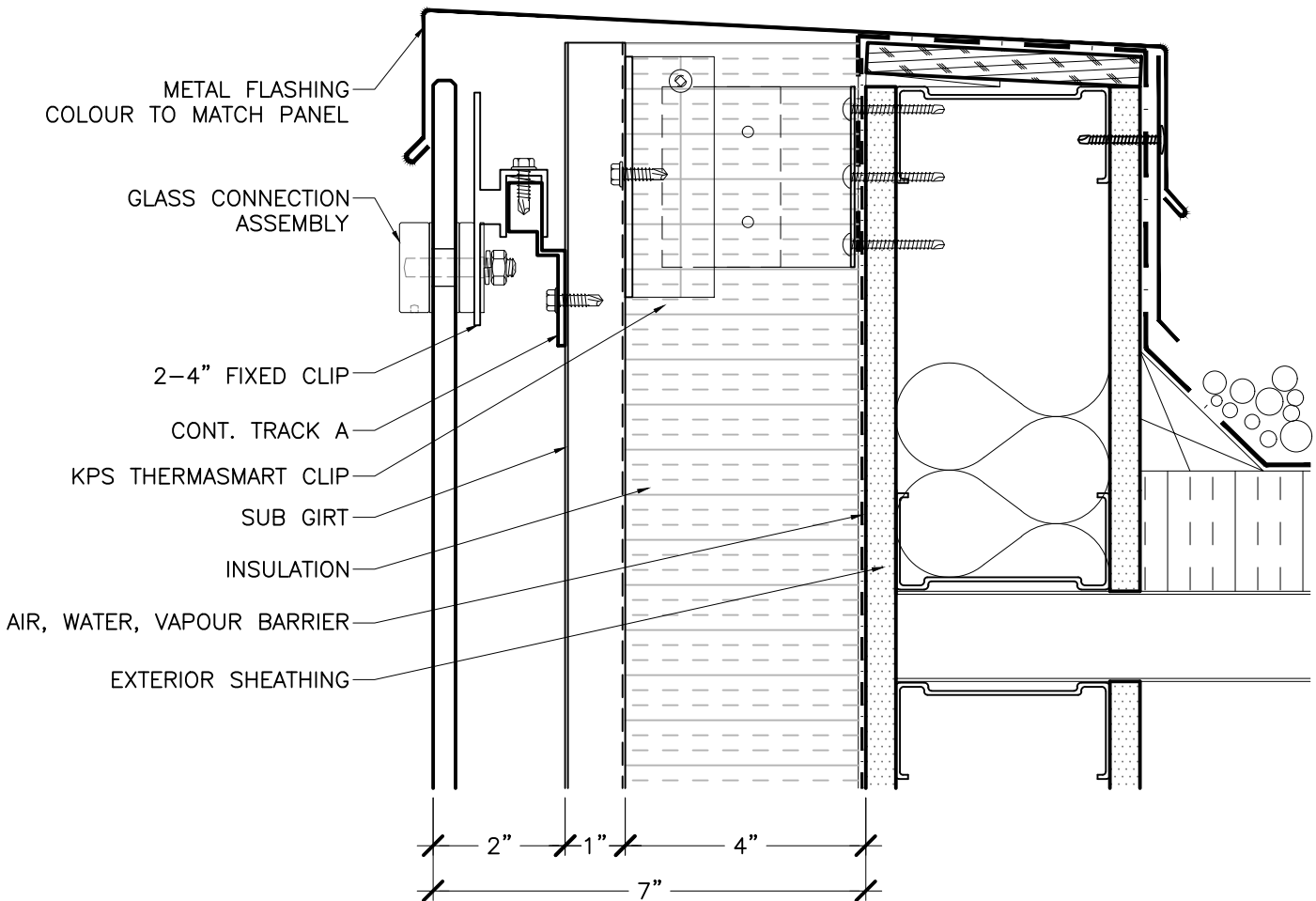


WINDOW JAMB

12 OF 15

# KEITH PANEL SYSTEMS

## SYSTEM DETAILS

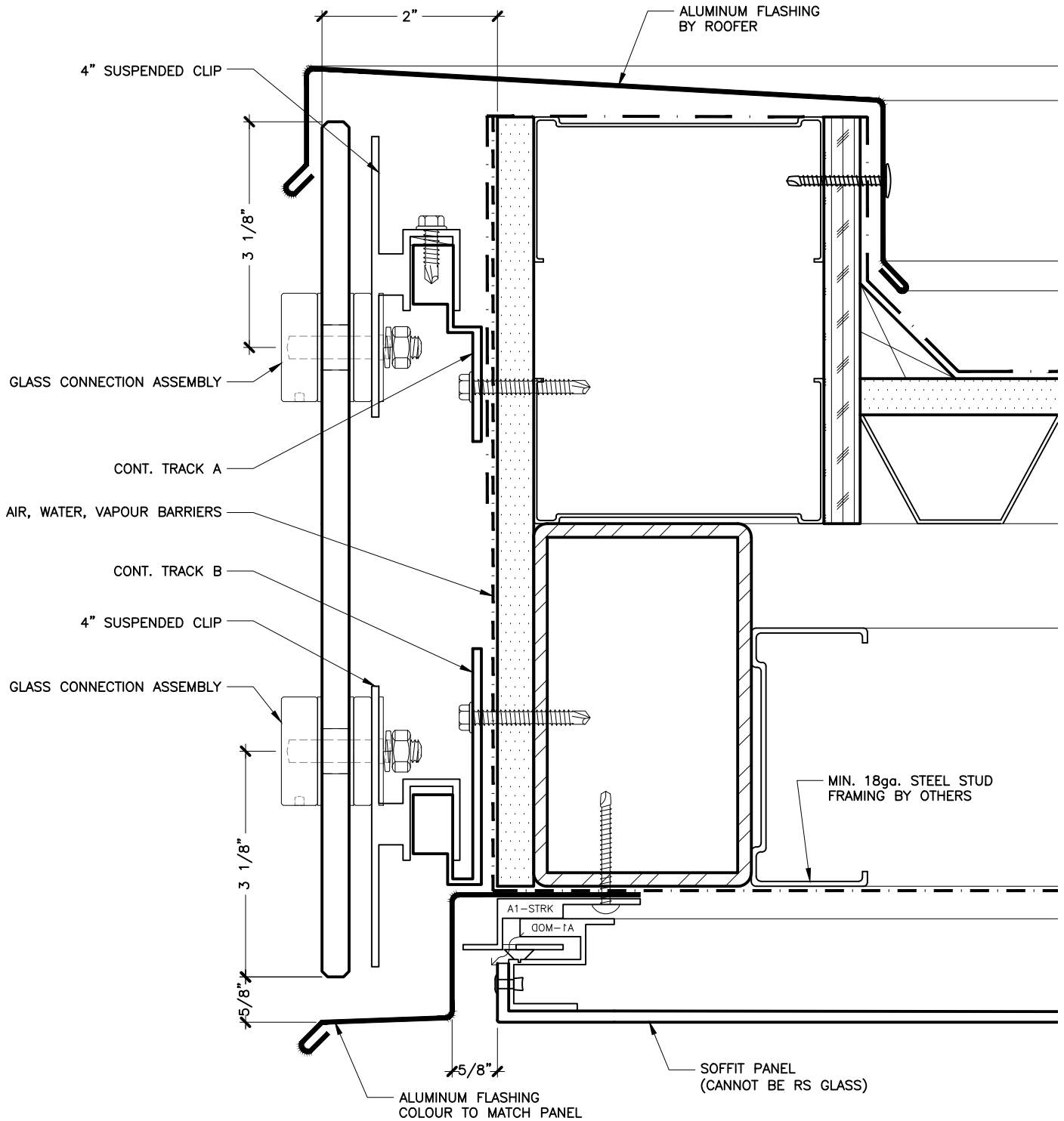


## PARAPET SECTION DETAIL

13 OF 15

# KEITH PANEL SYSTEMS

## SYSTEM DETAILS



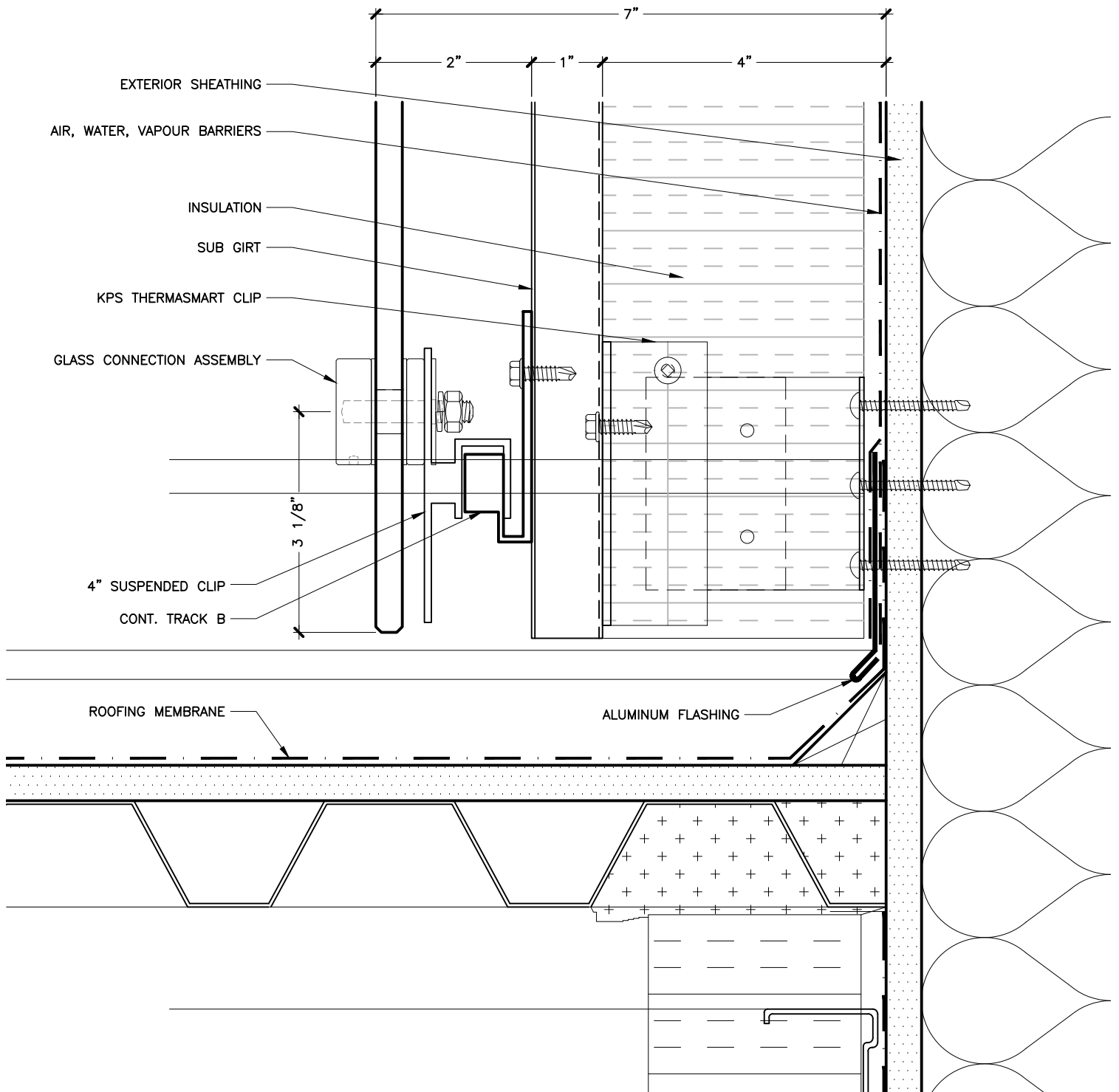
## SECTION DETAIL

14 OF 15



# KEITH PANEL SYSTEMS

## SYSTEM DETAILS



SECTION DETAIL

15 OF 15