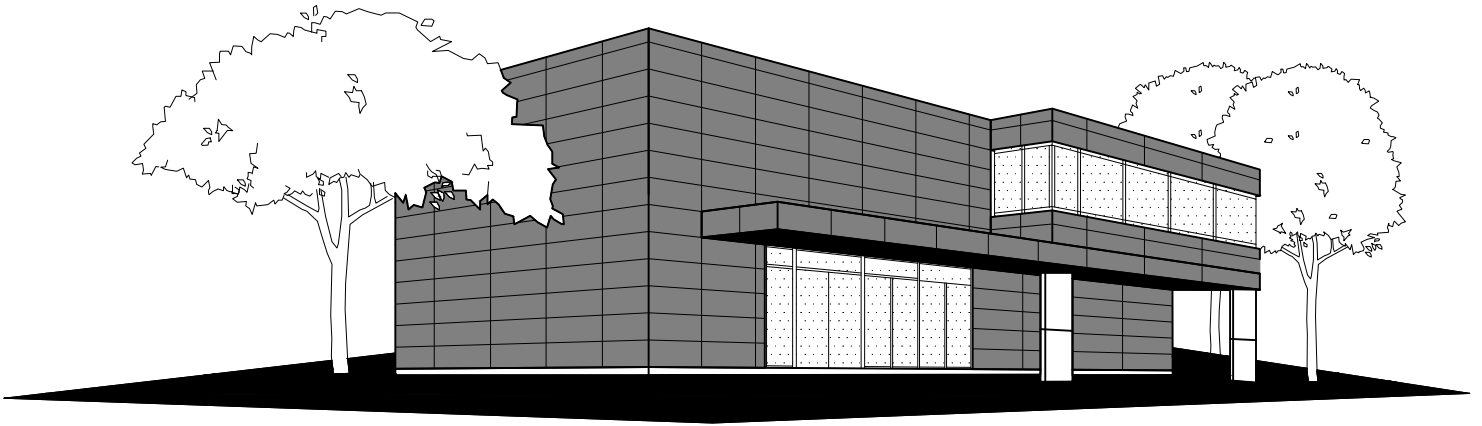


KEITH PANEL SYSTEMS

D E T A I L S



KPS RAIL CLIP SYSTEM

KEITH PANEL SYSTEMS

SYSTEM DETAILS

****THIS MANUAL IS PROVIDED FOR INFORMATION PURPOSES ONLY****

THE DETAILS SHOWN IN THIS DRAWING PACKAGE ARE NOT INTENDED TO REPLACE PROJECT SPECIFIC SUBMITTAL DRAWINGS, AND ARE SUBJECT TO CHANGE AT ANY TIME. ANY USE OF THESE DRAWINGS OR INSTALLATION OF THE SYSTEM SHOWN IN THESE DRAWINGS SHALL EXCLUSIVELY BE AT THE RISK OF THE PARTIES INVOLVED IN SUCH USE OR INSTALLATION, AND EACH OF SUCH PARTIES ASSUMES ANY AND ALL SUCH RISKS. BY USING THESE DRAWINGS/DETAILS IN ANY WAY, YOU ACKNOWLEDGE AND AGREE THAT YOU HAVE READ AND UNDERSTAND THIS LEGAL NOTICE.

GENERAL NOTES

1. KPS IS NOT RESPONSIBLE FOR INFORMATION SHOWN ON ALL DETAILS BEYOND KPS SPECIFIC SCOPE OF WORK.
2. DETAILS OF ADJACENT WORK ARE SHOWN FOR COMPLETENESS ONLY. THE PROJECT ARCHITECT/ PROJECT ENGINEER/ THE CONTRACTOR SUPPLYING AND/OR INSTALLING THE STRUCTURAL SUPPORT IS RESPONSIBLE FOR ITS DESIGN/ INSTALLATION TO ACCOMMODATE ALL LOADS IMPOSED UPON IT BY OUR PRODUCTS.
3. OUR ENGINEERING IS LIMITED TO THE LOAD CARRYING COMPONENTS OF THE PANEL SYSTEM AND ITS FASTENERS SHOWN ON THESE SHOP DRAWINGS.
4. OUR COMPANY POLICY IS TO IMPROVE AS WE PROGRESS, THEREFORE, THE DETAILS IN THIS MANUAL MAY IMPROVE OR CHANGE AS APPROVED BY CONSULTANTS.
5. THESE DRAWINGS SHALL REMAIN THE PROPERTY OF KEITH PANEL SYSTEMS CO. LTD. THIS DOCUMENT SHALL NOT BE REPRODUCED OR USED FOR ADDITIONS OR ALTERATIONS WITHOUT THE PRIOR WRITTEN CONSENT OF KEITH PANEL SYSTEMS CO. LTD.
6. JOINT CAULKING: IF REQUIRED. DOW CWS RECOMMENDED. (NOTE SHOP DRAWINGS FOR LOCATIONS.)
7. WEEP HOLES: 6.35 (1/4") DIAMETER HOLES. 2 HOLES—ONE AT EACH END ON HORIZONTAL AND VERTICAL PANELS.
8. INTERACTION BETWEEN DISSIMILAR MATERIALS (IE. ALUMINUM TO GALVANIZED STEEL) MUST BE SEPARATED (IE. SHIMS OR SEPARATION TAPE).
9. ADJACENT SUBTRADES TO LEAVE MINIMUM 150 (6") FLAP OF AIR/VAPOUR BARRIER TO TIE IN WITH KPS. SIMILIARLY KPS WILL LEAVE 150 (6") FLAP TO TIE IN WITH ADJACENT SUBTRADES WHICHEVER COMES FIRST.

KPS_GENERIC_2_MOD_PC

KEITH PANEL SYSTEMS

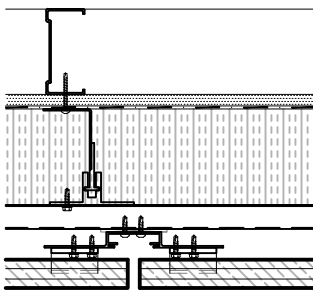
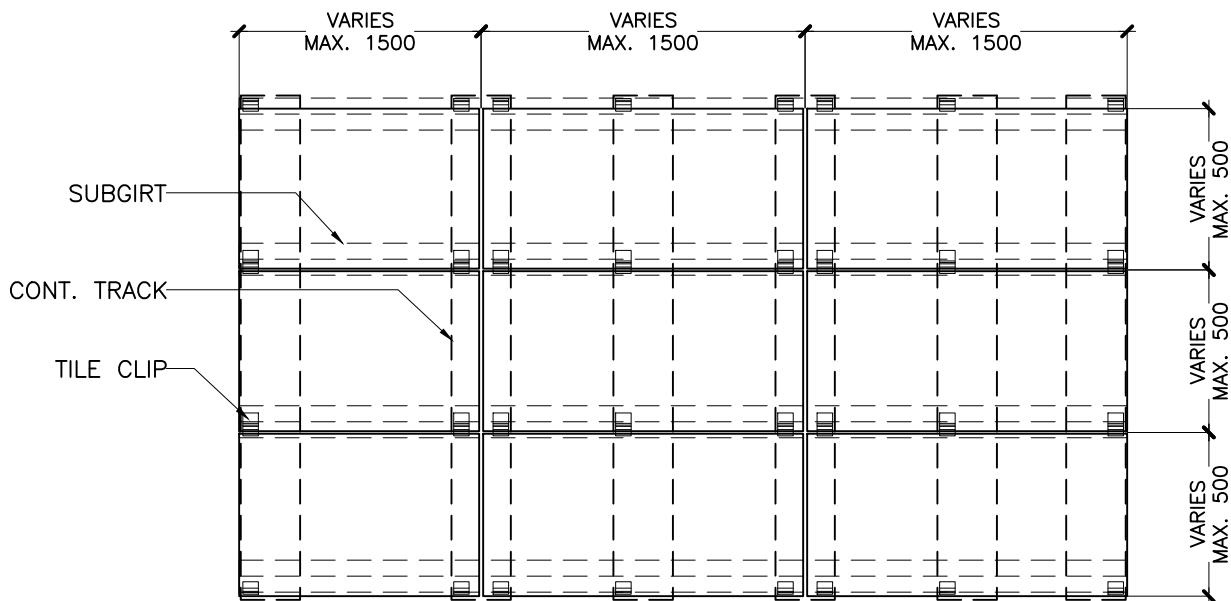
SYSTEM DETAILS

SEQUENCE OF INSTALLATION:

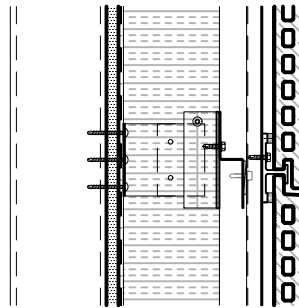
1. APPLY MEMBRANE.
2. FASTEN THERMAL CLIPS.
3. INSULATION (PINNED IF NECESSARY).
4. FASTEN CONTINUOUS HORIZONTAL TRACK.
5. FASTEN PRIMARY @ TOP PANEL TRACK AND HANG ON AND FIX TRACK TO THE THERMAL CLIPS.
6. FIX BOTTOM TILE CLIPS TO VERTICAL TRACK
7. PLACE TILE ONTO LOWER TILE CLIPS AND FIX UPPER TILE CLIPS TO VERTICAL TRACK AND REPEAT VERTICALLY
8. VERIFY INSTALLATION IS MATCHING DETAILS

NOTES ON SUBFRAMING:

1. SUBGIRT FRAMING LENGTH WILL BE MAXIMIZED IN ORDER TO MINIMIZE CUTTING. MAX. SUBGIRT LENGTH 3050 (10'-0").
2. TO ALLOW FOR ADEQUATE EXPANSION, THE VERTICAL SUBGIRT MUST BE INTERRUPTED WITH A GAP APPROXIMATELY 19 (3/4").
3. EACH SUBFRAMING CAN SPAN MAXIMUM 1 STOREY TO ALLOW FOR INTERSTOREY DRIFT.
4. THE JOINTS OF THE VERTICAL LOAD BEARING PROFILES MUST COINCIDE WITH THE HORIZONTAL JOINTS OF THE PANELS. SEE DIAGRAM TO RIGHT.
IMPORTANT: DO NOT FASTEN PANEL ALONG TWO SEPARATE VERTICAL TRACKS. ALLOW FOR ADEQUATE EXPANSION. FASTEN BETWEEN THE BOTTOM & TOP OF CONTINUOUS VERTICAL SUBGIRTS.



PLAN



SECTION



TYPICAL TERRACOTTA PANEL SUBFRAMING LAYOUT & NOTES

1 OF 15

KEITH PANEL SYSTEMS

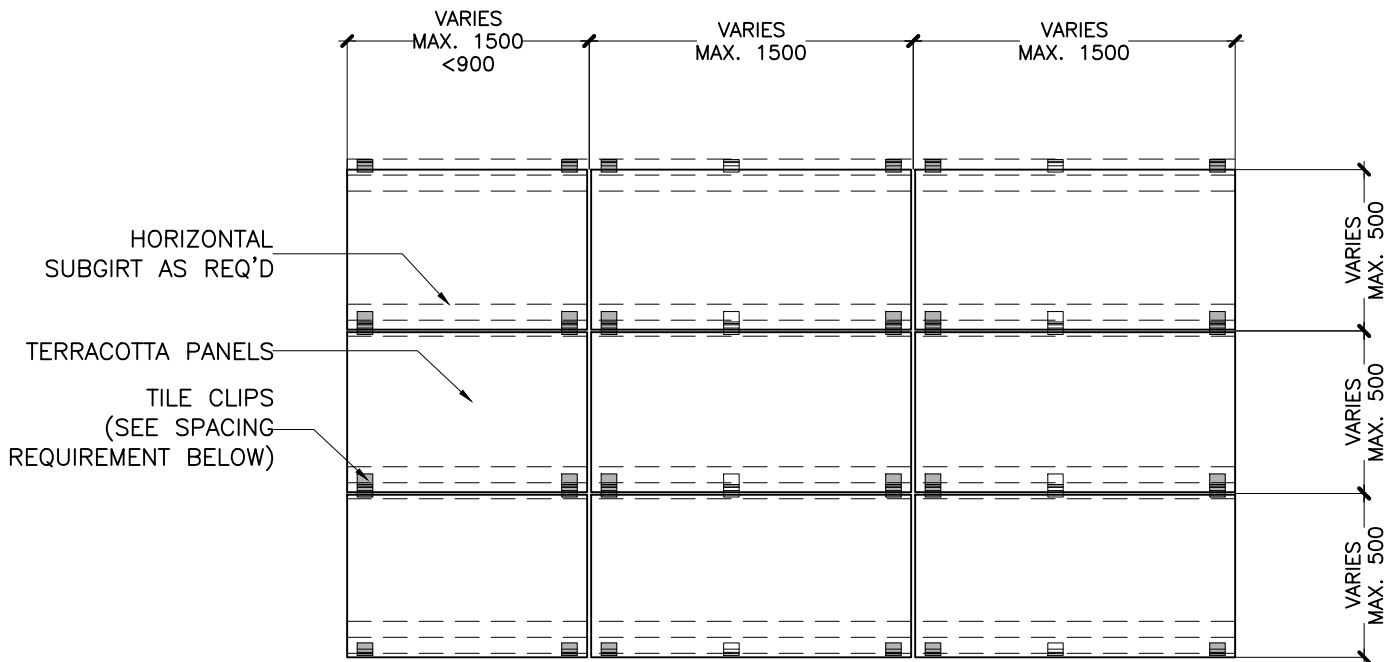
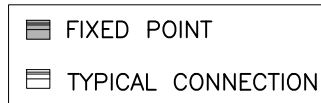
SYSTEM DETAILS

FIXED POINTS VERSUS EXPANSION POINTS:

1. THE FIXING OF TERRACOTTA PANELS TO ALUMINUM SUBFRAMING REQUIRES 4 FIXED POINTS PER PANEL AND 2 FIXED CLIPS.
2. FIXED POINT IS ATTACHED TO FIXED CLIP.
3. THE FIXED POINT WILL BE TYPICALLY POSITIONED AS SHOWN ON THE DIAGRAM BELOW.

CONNECTION NOTES:

1. ALL PANEL ATTACHMENT ASSEMBLIES ARE THE SAME.
2. TOP ATTACHMENTS – CLIPS ARE RESTING ON TRACKS.
3. FIXED POINT – CLIP MECHANICALLY FASTENED TO RAIL W/ 2-#10 SCREWS
4. BOTTOM ATTACHMENTS – SUSPENDED ABOVE RAILS.



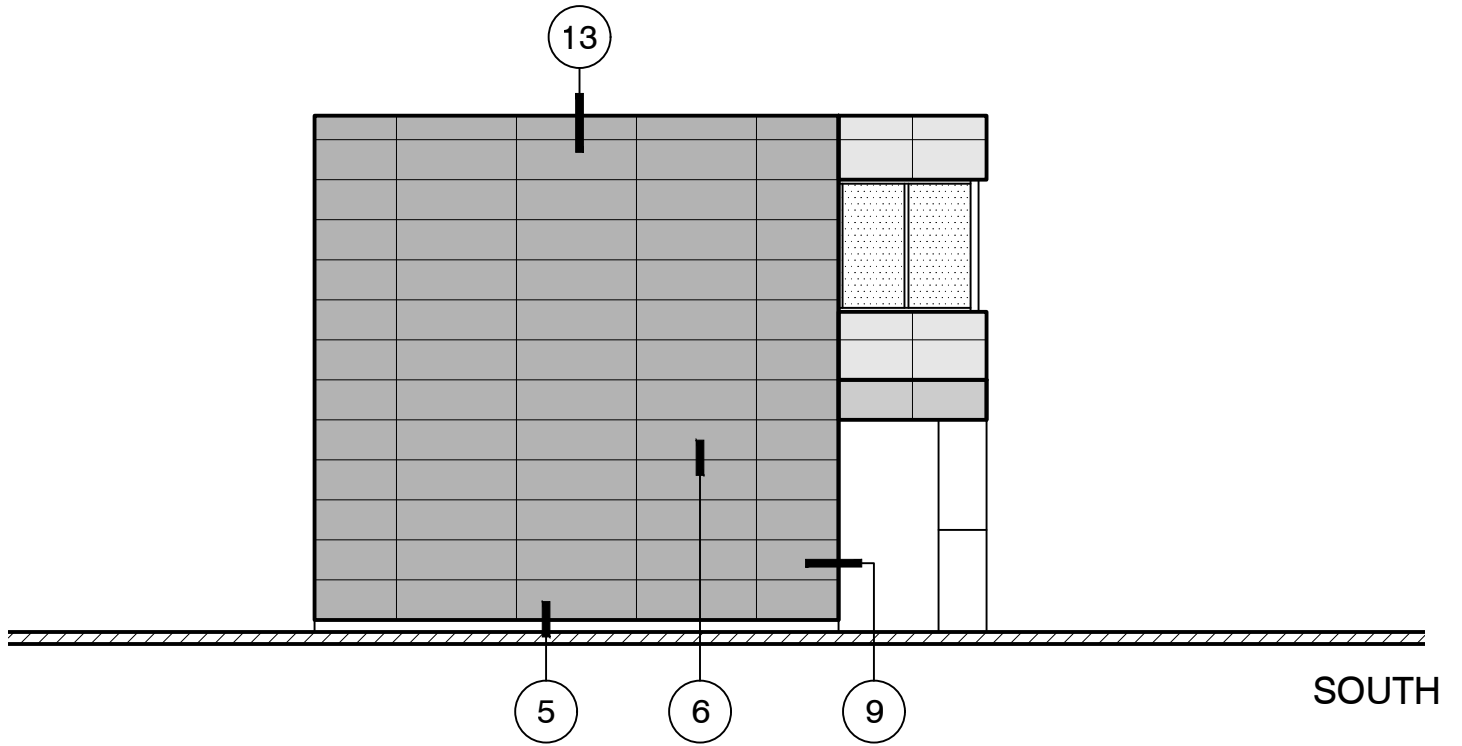
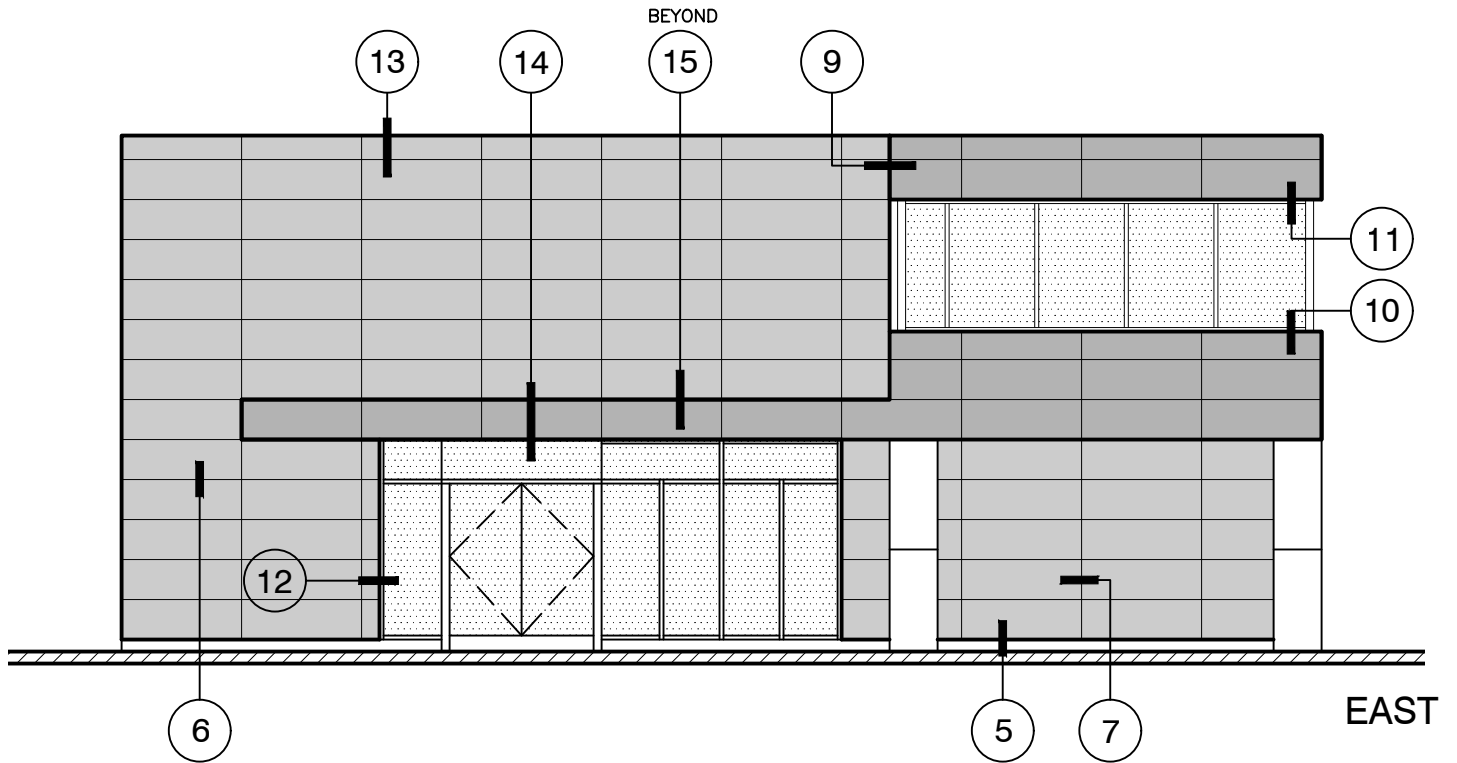
TILE CLIP HORIZONTAL SPACING NOTE

NOTE; PANEL LENGTHS = 900 (35 7/16") OR LESS (2 CLIPS PER TILE)
 PANEL LENGTHS EQUAL OR GREATER THAN 900 (35 7/16") (3 CLIPS PER TILE)
 PANEL WIDTHS (MIN. 2 CLIPS PER TILE).



KEITH PANEL SYSTEMS

SYSTEM DETAILS



KPS_GENERIC_2_MOD_PC

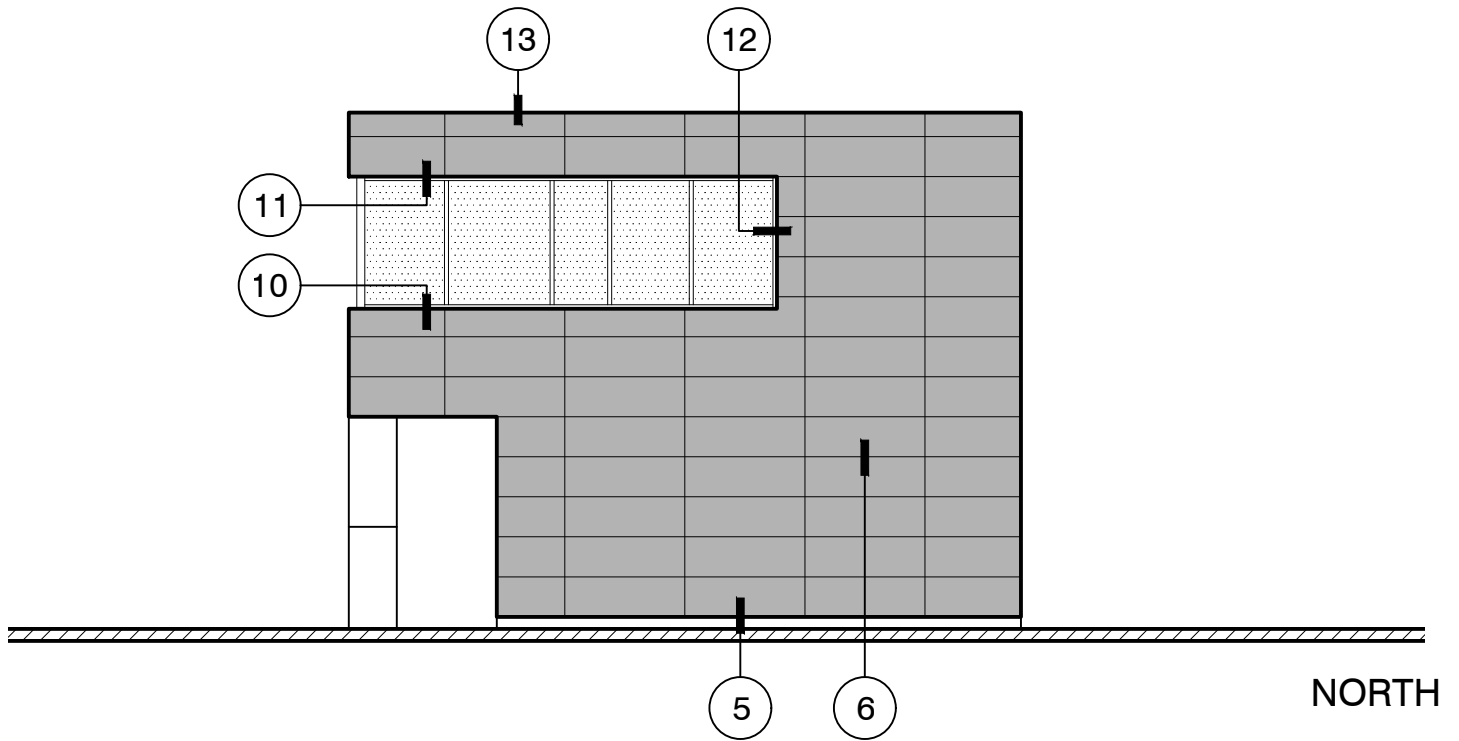
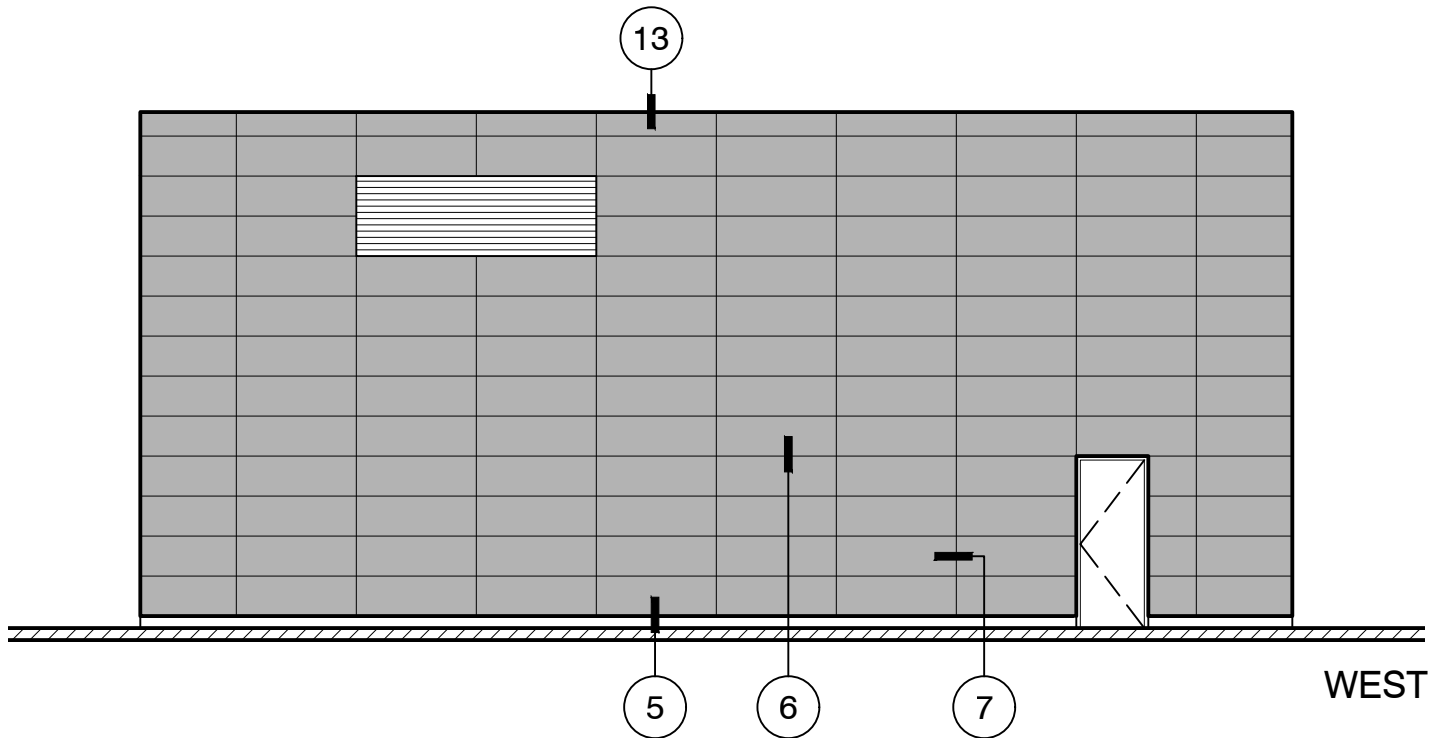


EAST AND SOUTH ELEVATIONS

3 OF 15

KEITH PANEL SYSTEMS

SYSTEM DETAILS



KPS_GENERIC_2_MOD_PC

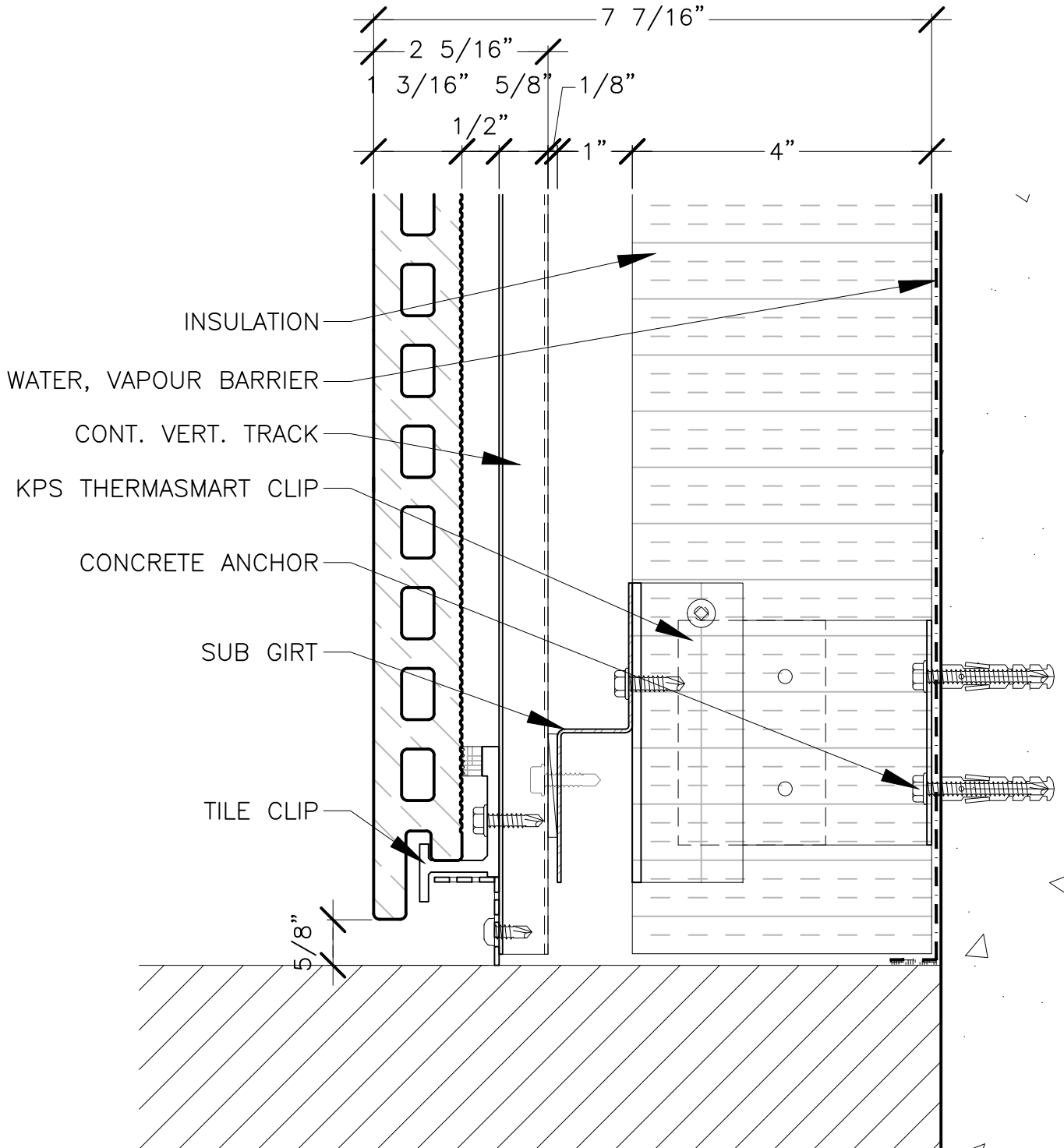


WEST AND NORTH ELEVATIONS

4 OF 15

KEITH PANEL SYSTEMS

SYSTEM DETAILS

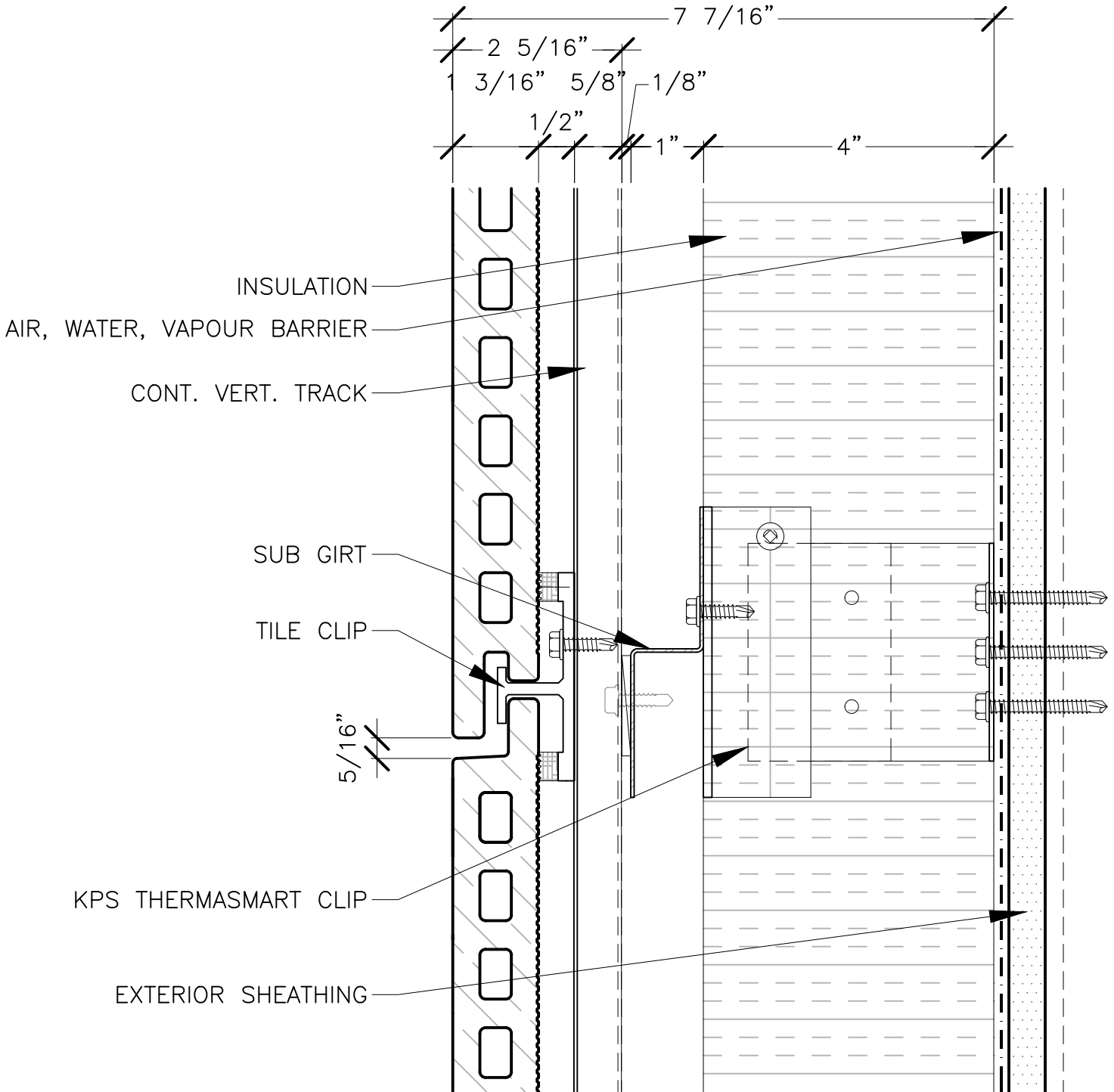


PANEL SILL AT FINISHED GRADE/BALCONY

5 OF 15

KEITH PANEL SYSTEMS

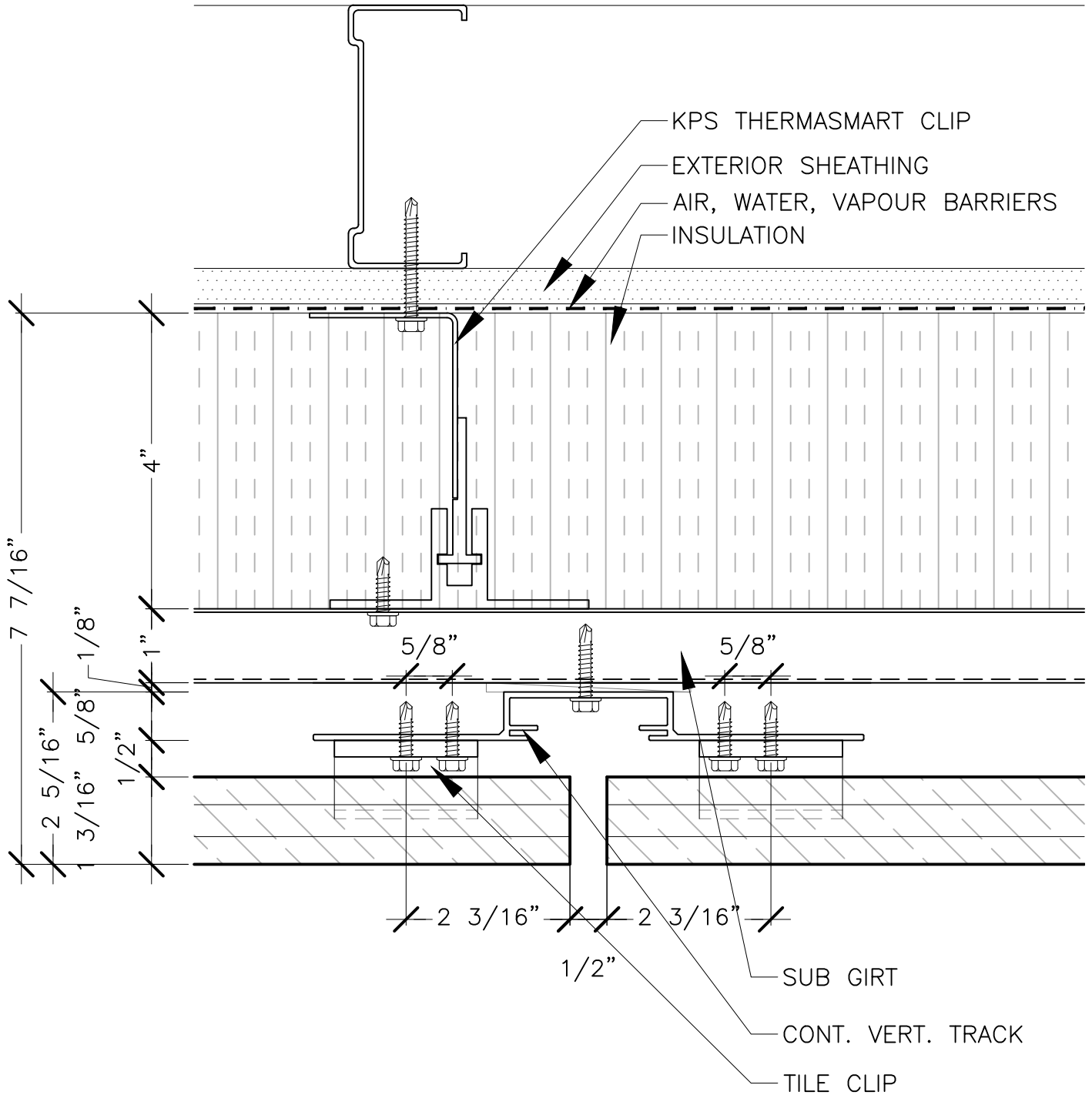
SYSTEM DETAILS



HORIZONTAL JOINT

KEITH PANEL SYSTEMS

SYSTEM DETAILS

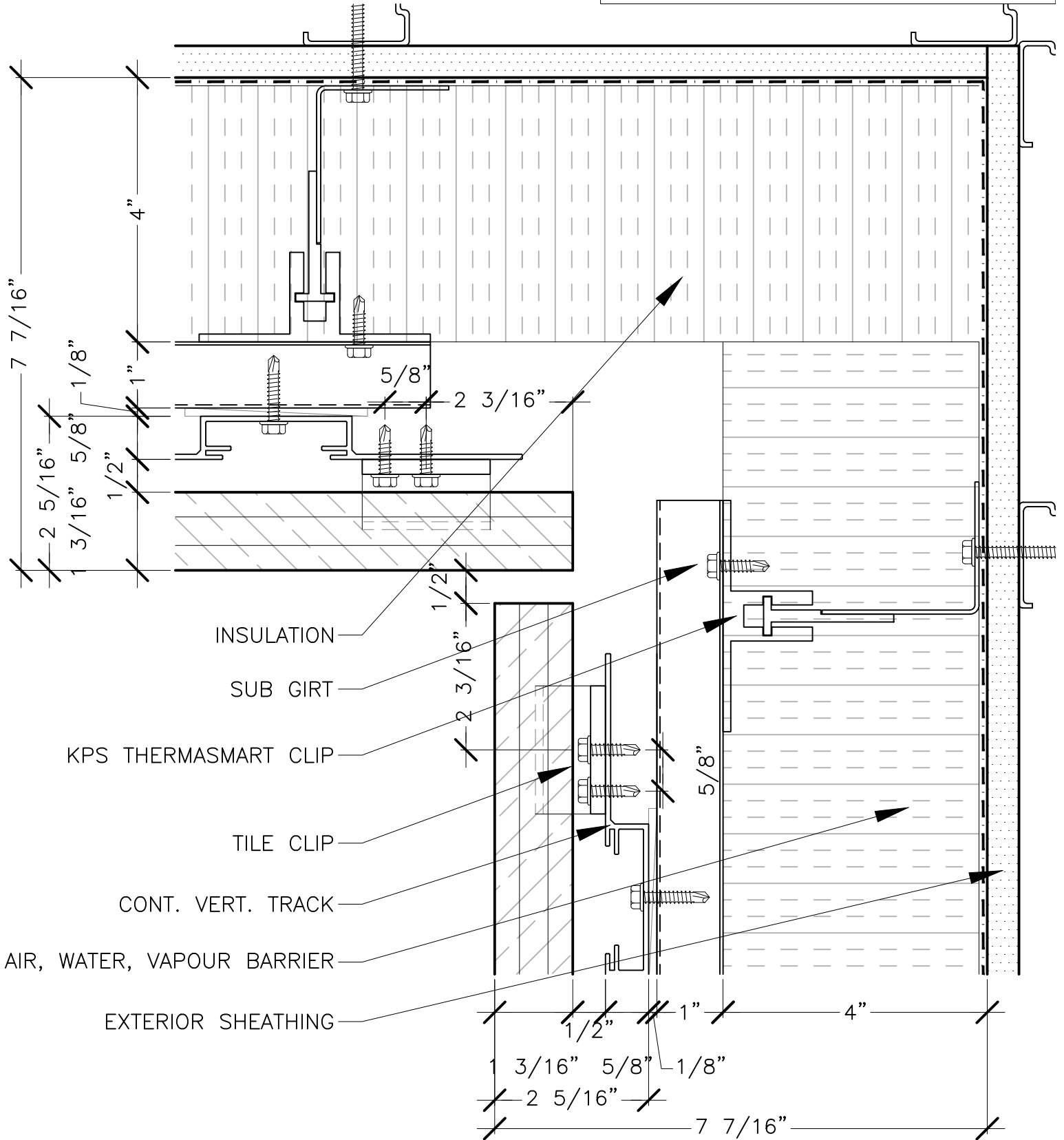


VERTICAL JOINT

7 OF 15

KEITH PANEL SYSTEMS

SYSTEM DETAILS

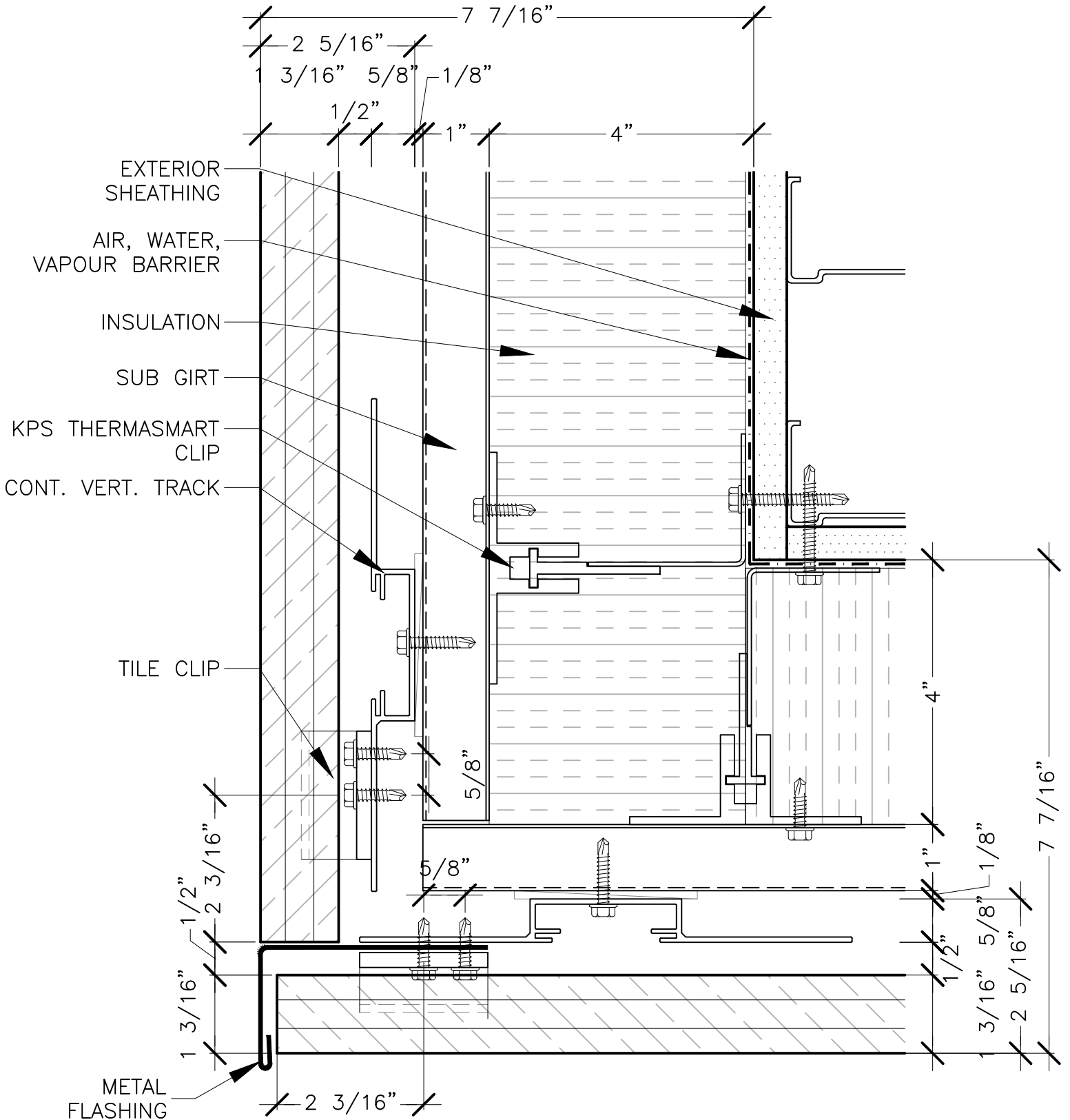


PLAN DETAIL INSIDE CORNER

8 OF 15

KEITH PANEL SYSTEMS

SYSTEM DETAILS

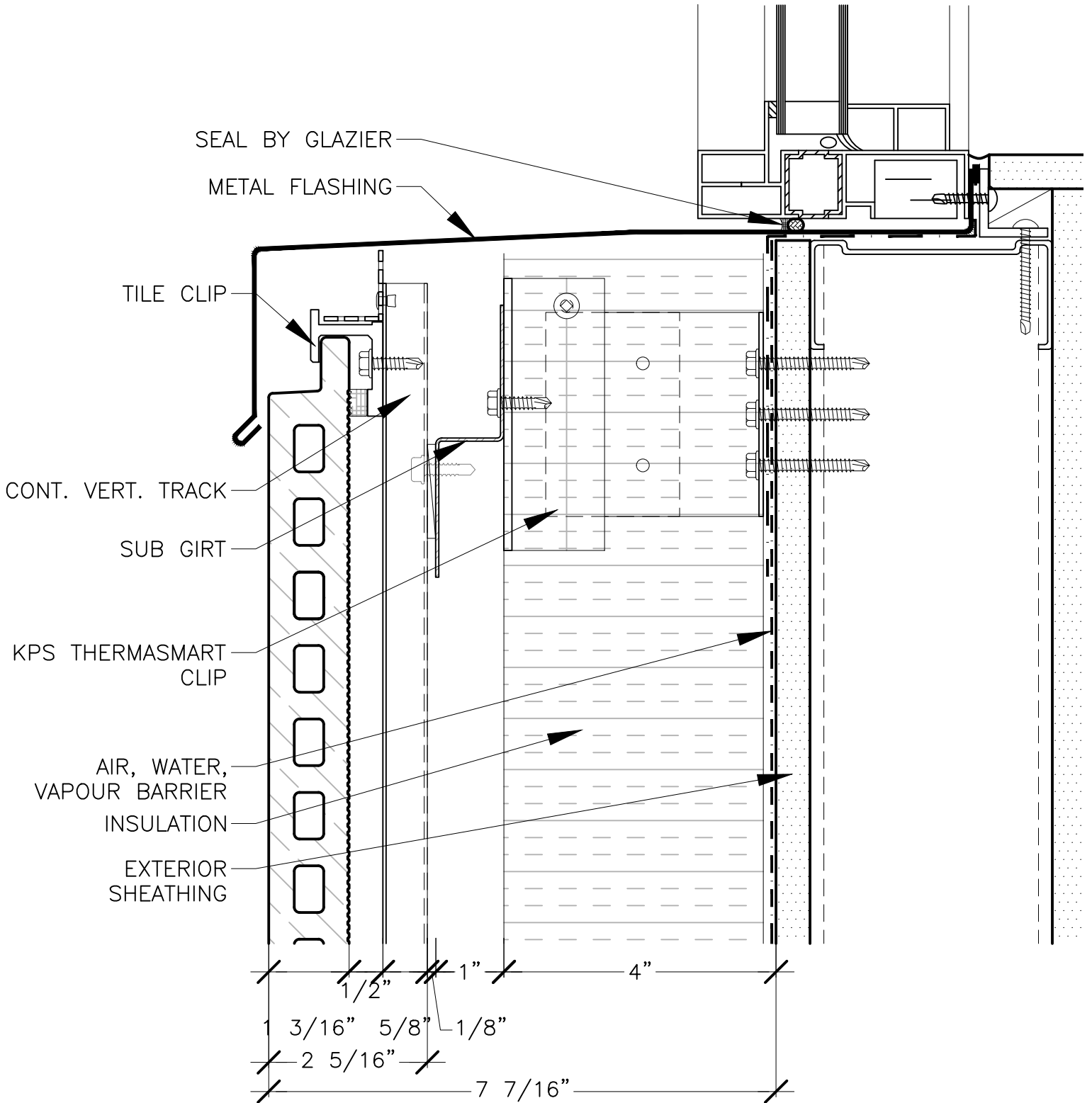


PLAN DETAIL OUTSIDE CORNER

9 OF 15

KEITH PANEL SYSTEMS

SYSTEM DETAILS

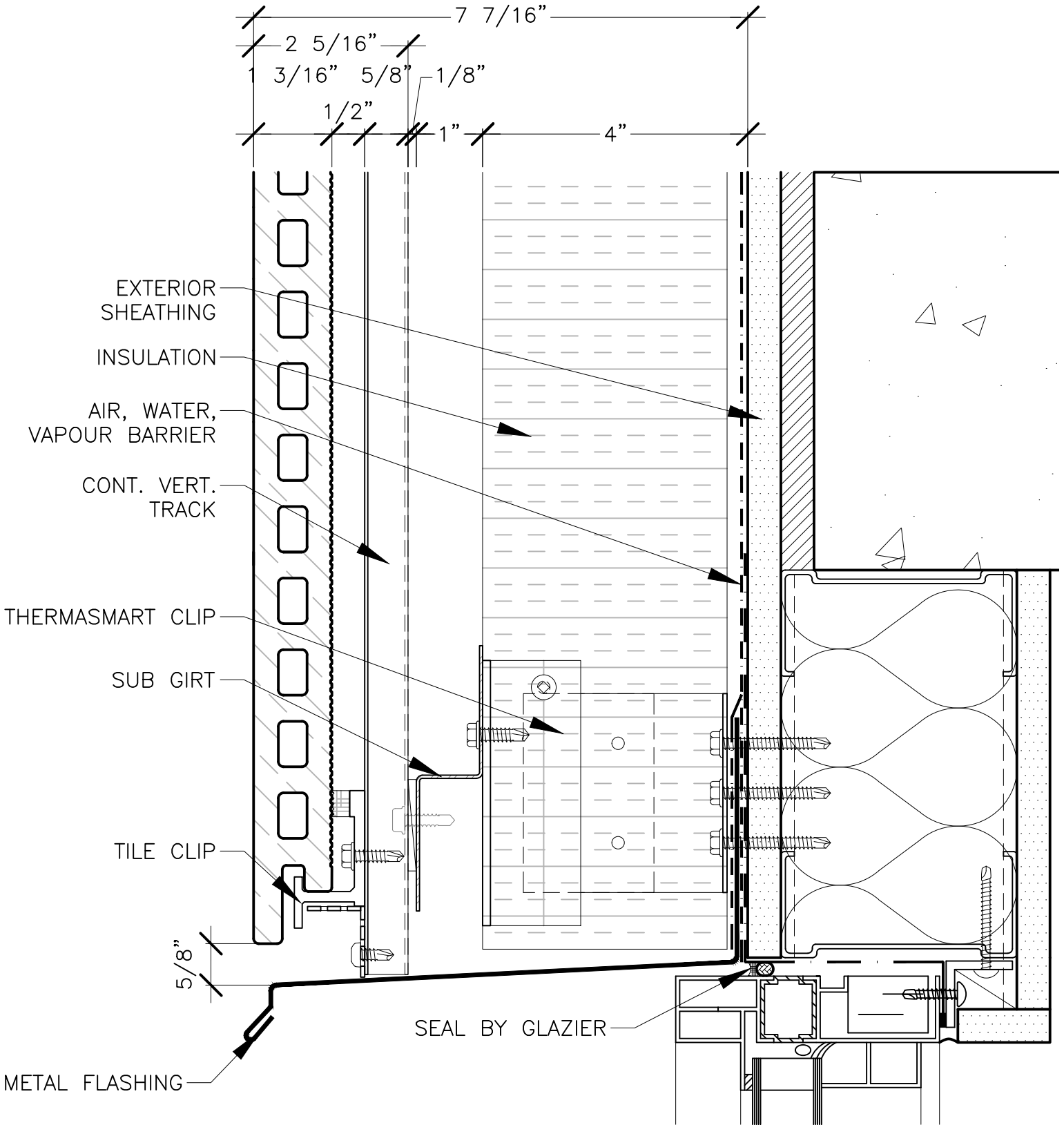


WINDOW SILL

10 OF 15

KEITH PANEL SYSTEMS

SYSTEM DETAILS

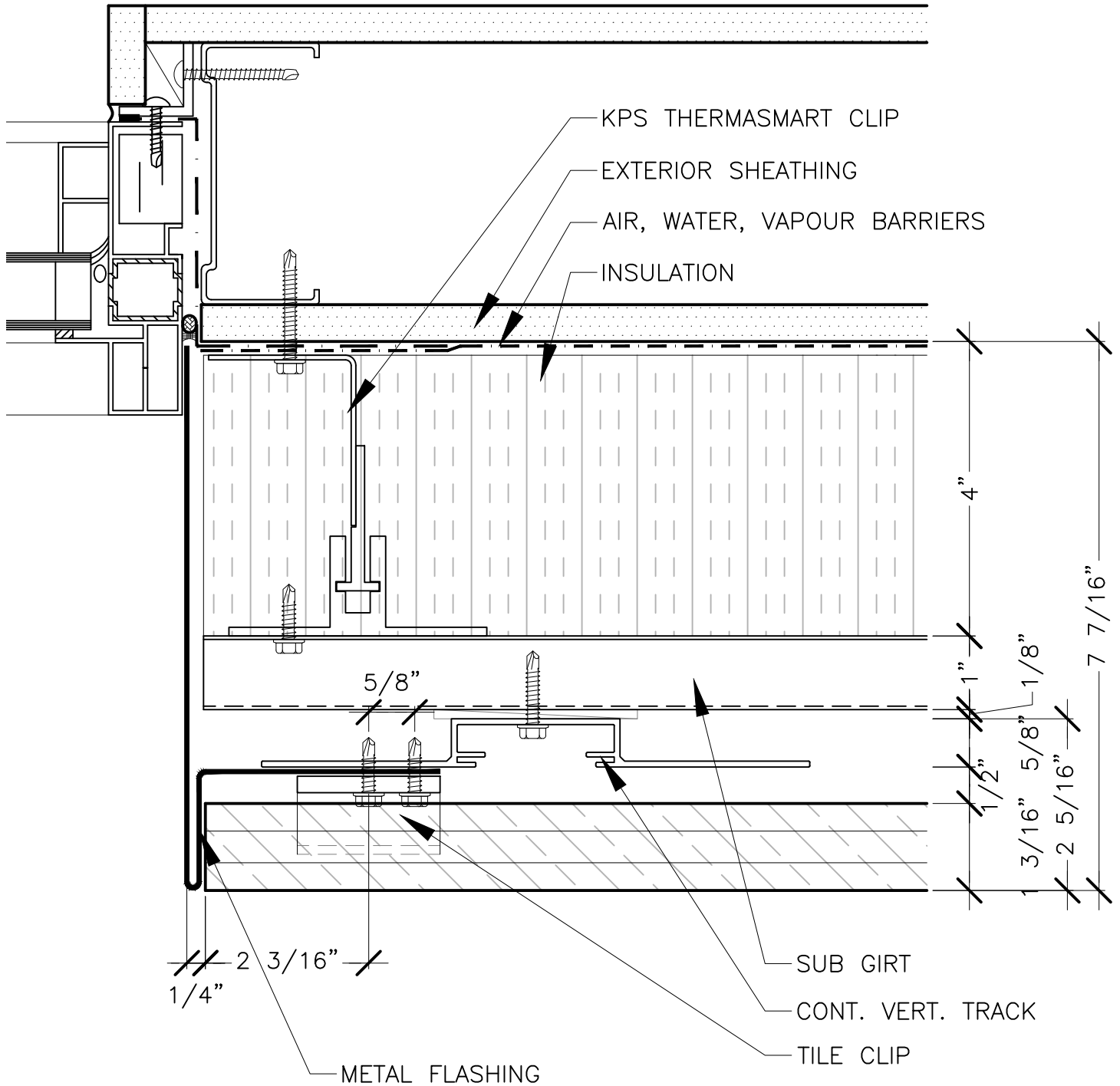


WINDOW HEAD

11 OF 15

KEITH PANEL SYSTEMS

SYSTEM DETAILS

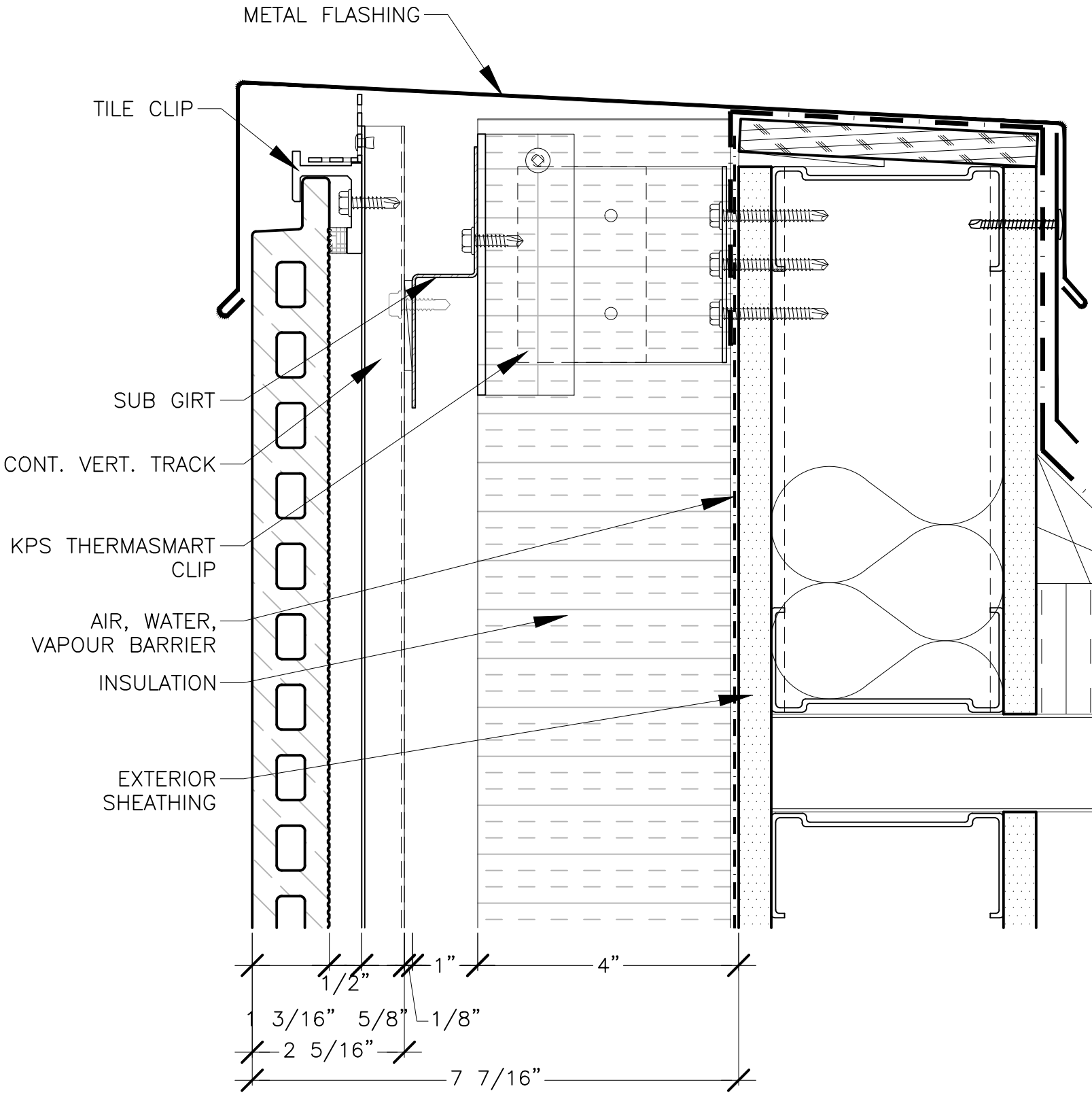


WINDOW JAMB

12 OF 15

KEITH PANEL SYSTEMS

SYSTEM DETAILS

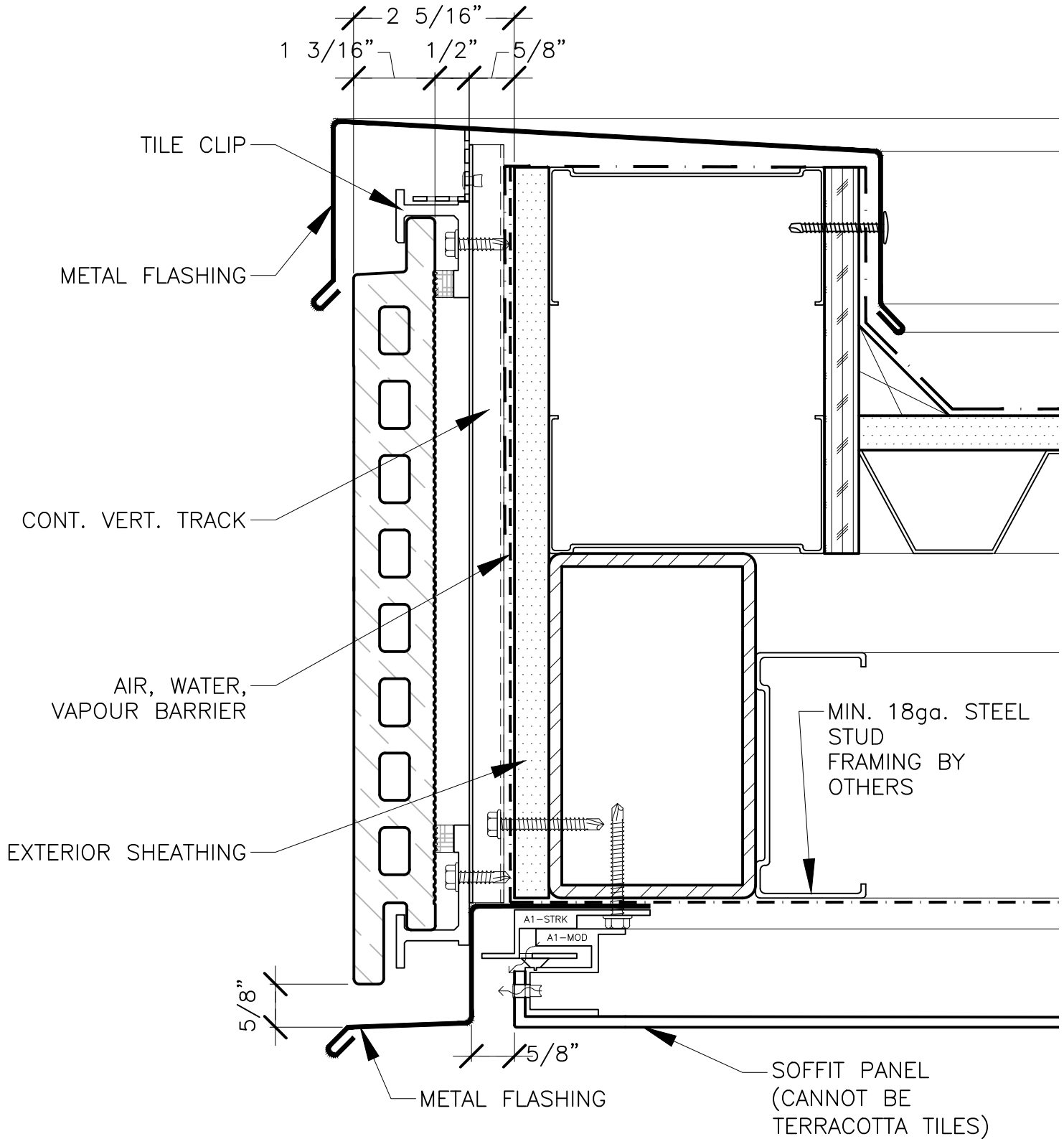


PARAPET SECTION DETAIL

13 OF 15

KEITH PANEL SYSTEMS

SYSTEM DETAILS

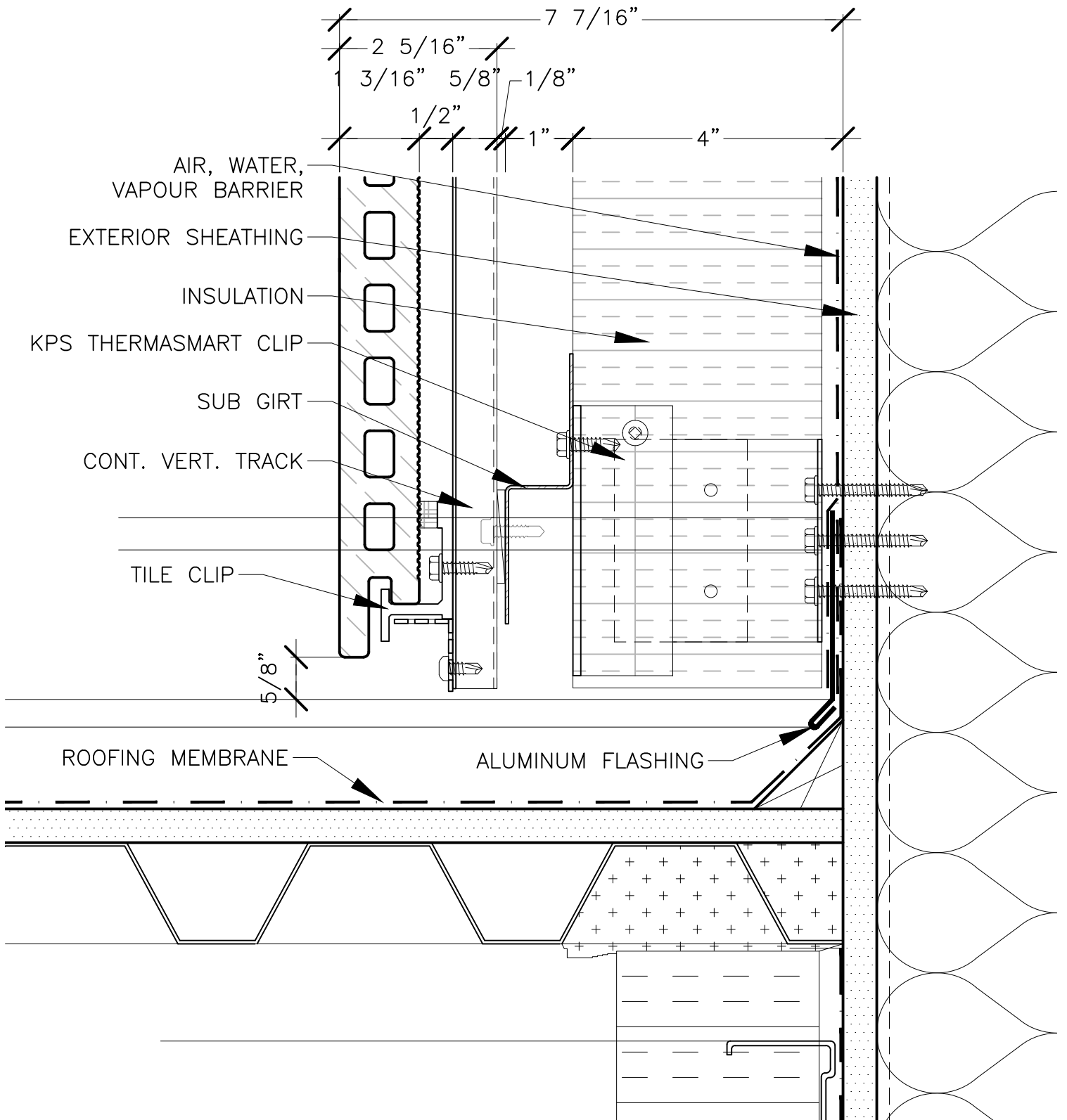


SECTION DETAIL

14 OF 15

KEITH PANEL SYSTEMS

SYSTEM DETAILS



SECTION DETAIL

15 OF 15