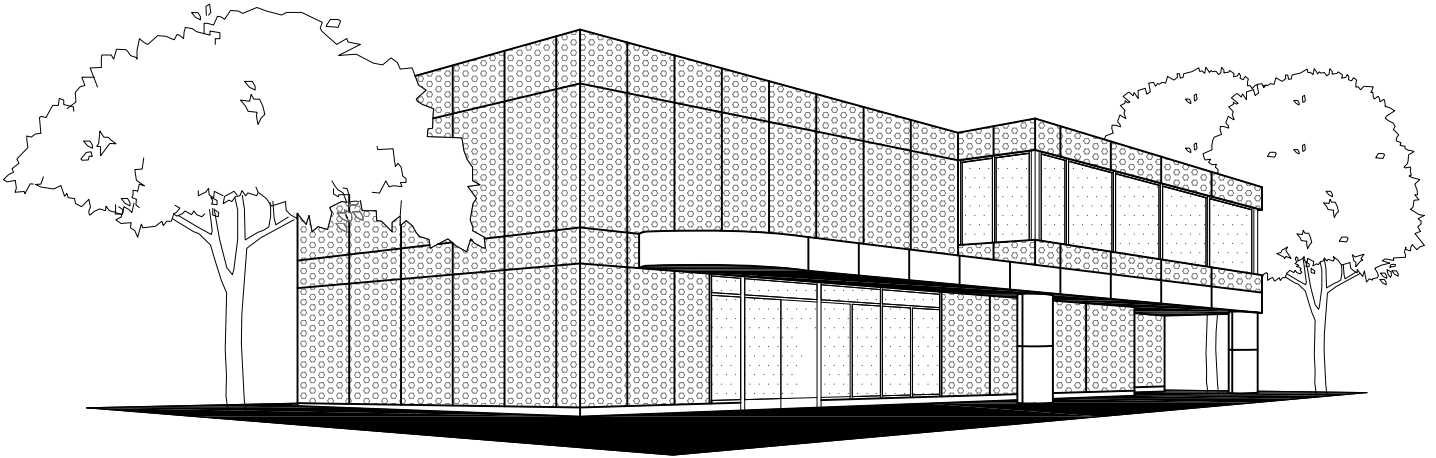


# KEITH PANEL SYSTEMS

---

## D E T A I L S



### LOCK MOUNT SYSTEM OMBRAE

# KEITH PANEL SYSTEMS

## LOCK MOUNT SYSTEM OMBRAE DETAILS

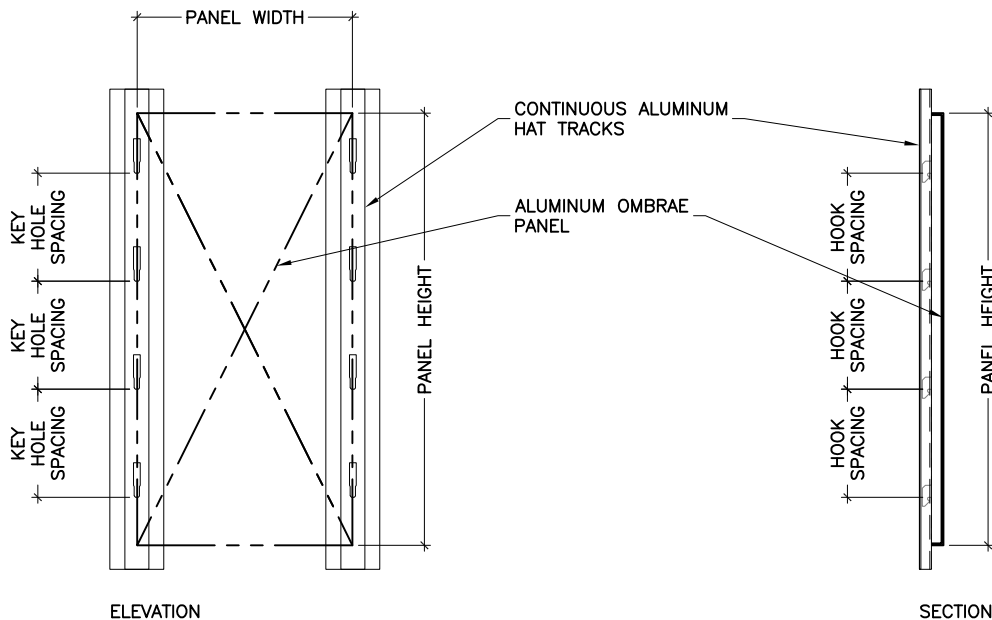
**\*\*THIS MANUAL IS PROVIDED FOR INFORMATION PURPOSES ONLY\*\***

THE DETAILS SHOWN IN THIS DRAWING PACKAGE ARE NOT INTENDED TO REPLACE PROJECT SPECIFIC SUBMITTAL DRAWINGS, AND ARE SUBJECT TO CHANGE AT ANY TIME. ANY USE OF THESE DRAWINGS OR INSTALLATION OF THE SYSTEM SHOWN IN THESE DRAWINGS SHALL EXCLUSIVELY BE AT THE RISK OF THE PARTIES INVOLVED IN SUCH USE OR INSTALLATION, AND EACH OF SUCH PARTIES ASSUMES ANY AND ALL SUCH RISKS. BY USING THESE DRAWINGS/DETAILS IN ANY WAY, YOU ACKNOWLEDGE AND AGREE THAT YOU HAVE READ AND UNDERSTAND THIS LEGAL NOTICE.

### GENERAL NOTES

1. KPS IS NOT RESPONSIBLE FOR INFORMATION SHOWN ON ALL DETAILS BEYOND KPS SPECIFIC SCOPE OF WORK.
2. DETAILS OF ADJACENT WORK ARE SHOWN FOR COMPLETENESS ONLY. THE PROJECT ARCHITECT/ PROJECT ENGINEER/ THE CONTRACTOR SUPPLYING AND/OR INSTALLING THE STRUCTURAL SUPPORT IS RESPONSIBLE FOR ITS DESIGN/ INSTALLATION TO ACCOMMODATE ALL LOADS IMPOSED UPON IT BY OUR PRODUCTS.
3. OUR ENGINEERING IS LIMITED TO THE LOAD CARRYING COMPONENTS OF THE PANEL SYSTEM AND ITS FASTENERS SHOWN ON THESE SHOP DRAWINGS.
4. OUR COMPANY POLICY IS TO IMPROVE AS WE PROGRESS, THEREFORE, THE DETAILS IN THIS MANUAL MAY IMPROVE OR CHANGE AS APPROVED BY CONSULTANTS.
5. THESE DRAWINGS SHALL REMAIN THE PROPERTY OF KEITH PANEL SYSTEMS CO. LTD. THIS DOCUMENT SHALL NOT BE REPRODUCED OR USED FOR ADDITIONS OR ALTERATIONS WITHOUT THE PRIOR WRITTEN CONSENT OF KEITH PANEL SYSTEMS CO. LTD.
6. JOINT CAULKING: IF REQUIRED. DOW CWS RECOMMENDED. (NOTE SHOP DRAWINGS FOR LOCATIONS.)
7. INTERACTION BETWEEN DISSIMILAR MATERIALS (IE. ALUMINUM TO GALVANIZED STEEL) MUST BE SEPARATED (IE. SHIMS OR SEPARATION TAPE).
8. ADJACENT SUBTRADES TO LEAVE MINIMUM 6" FLAP OF AIR/VAPOUR BARRIER TO TIE IN WITH KPS. SIMILIARLY KPS WILL LEAVE 6" FLAP TO TIE IN WITH ADJACENT SUBTRADES WHICHEVER COMES FIRST.

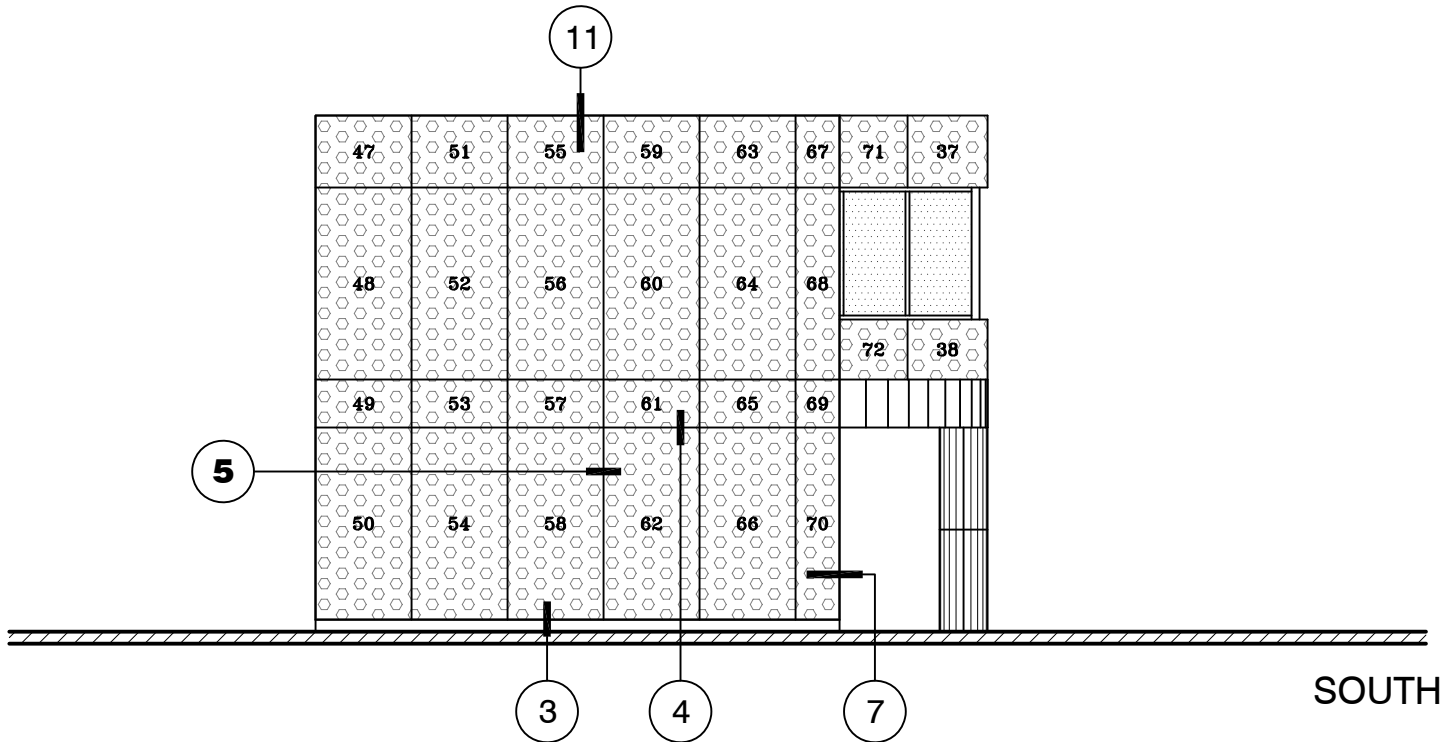
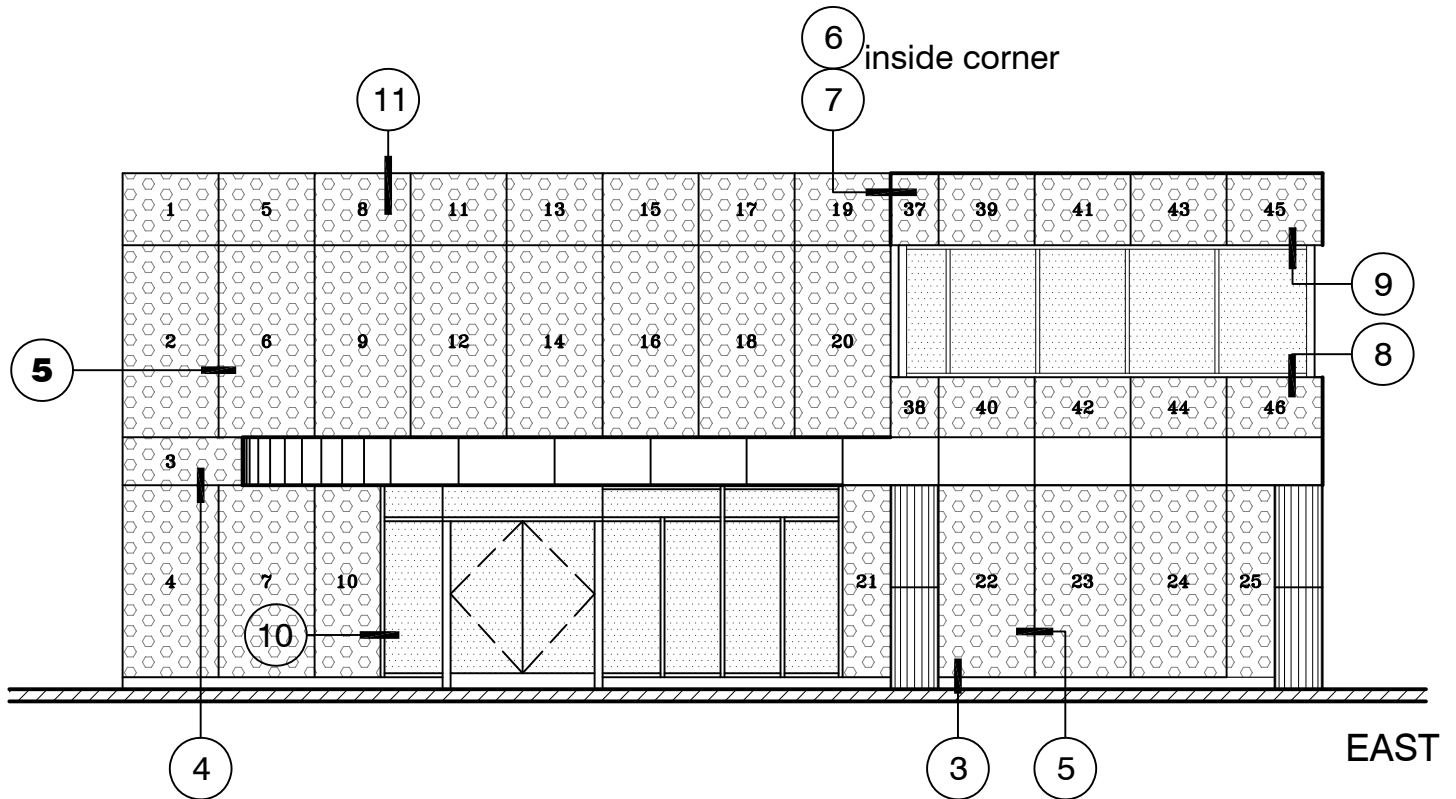
### TYPICAL PANEL MOUNTING



KPS Generic Details - LOCK MOUNT SYSTEM.dwgMA

# KEITH PANEL SYSTEMS

LOCK MOUNT SYSTEM OMBRAE DETAILS



KPS\_GENERIC\_2\_MOD\_PC

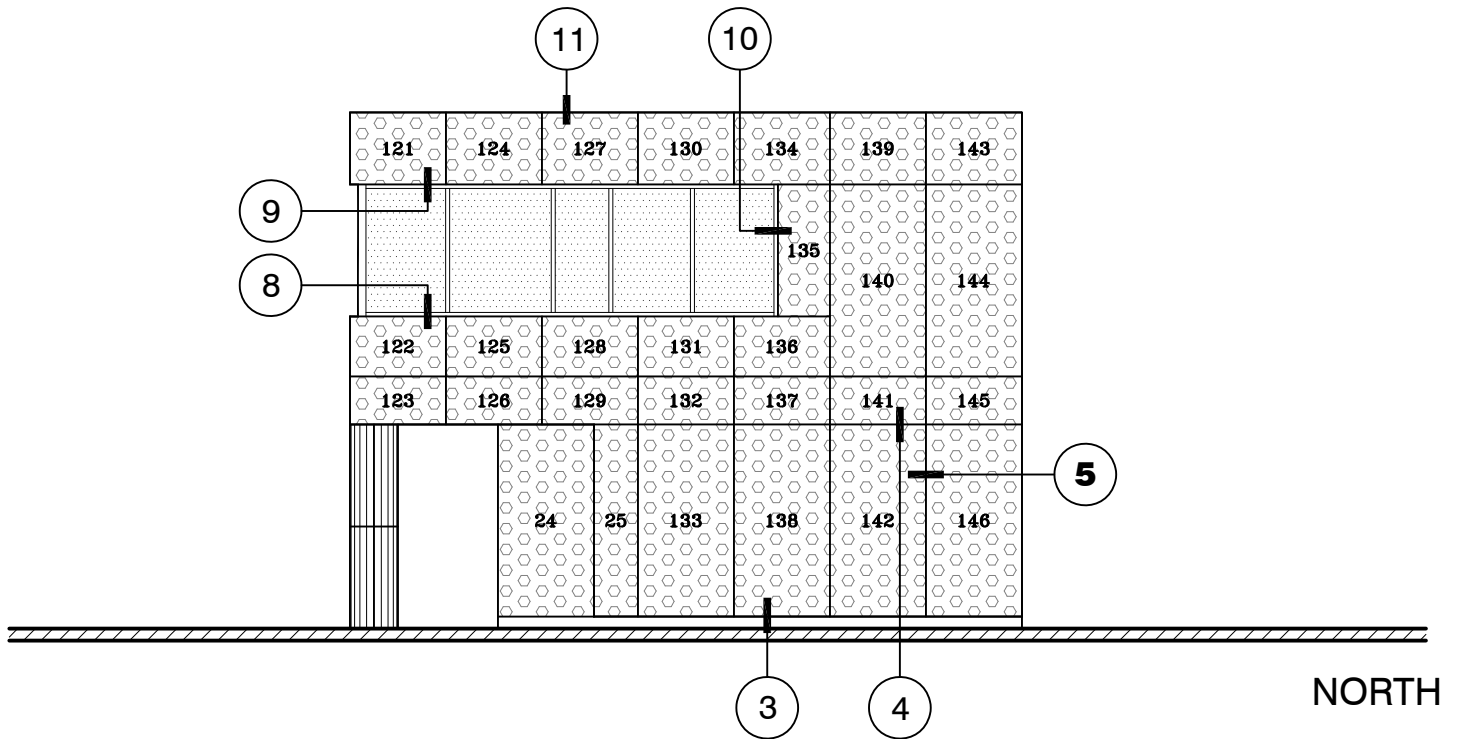
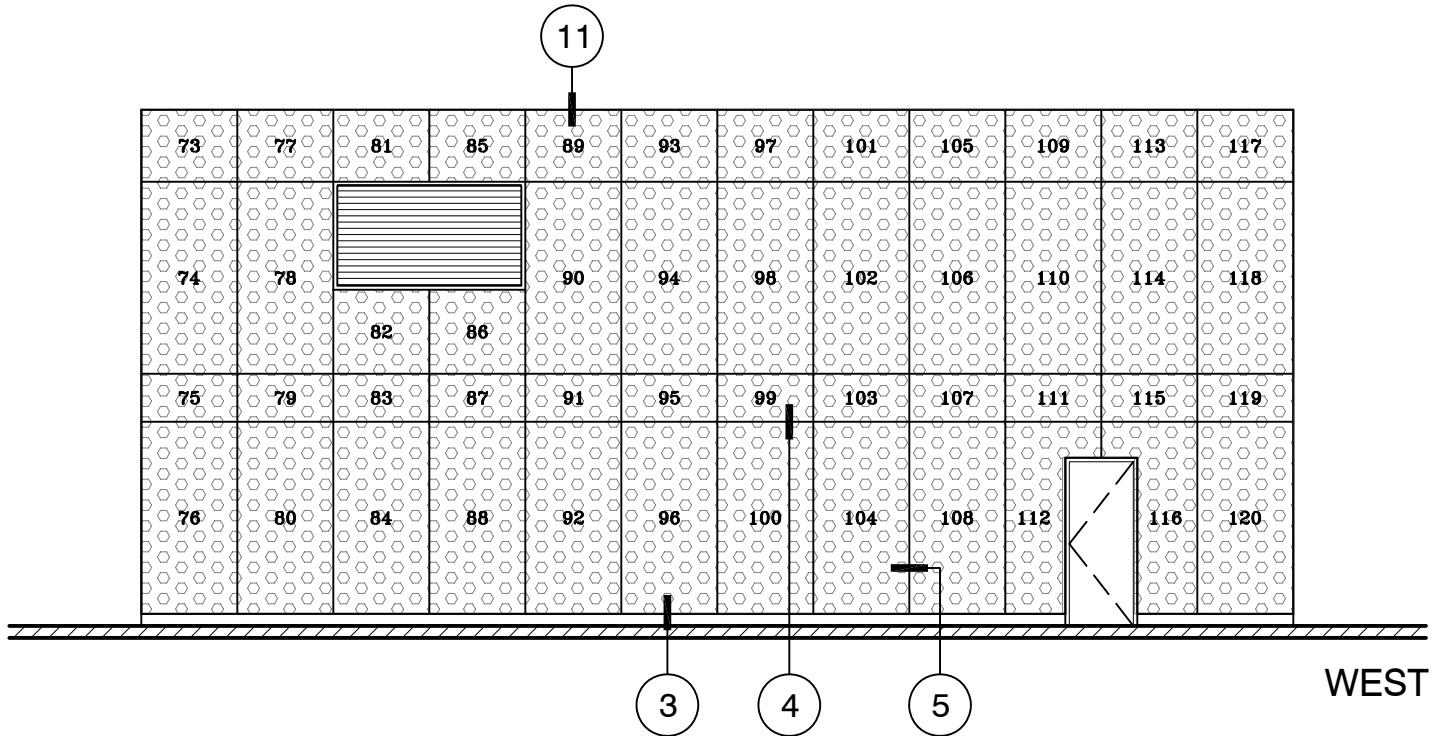


EAST AND SOUTH ELEVATIONS

1 OF 11

# KEITH PANEL SYSTEMS

## LOCK MOUNT SYSTEM OMBRAE DETAILS



KPS\_GENERIC\_2\_MOD\_PC

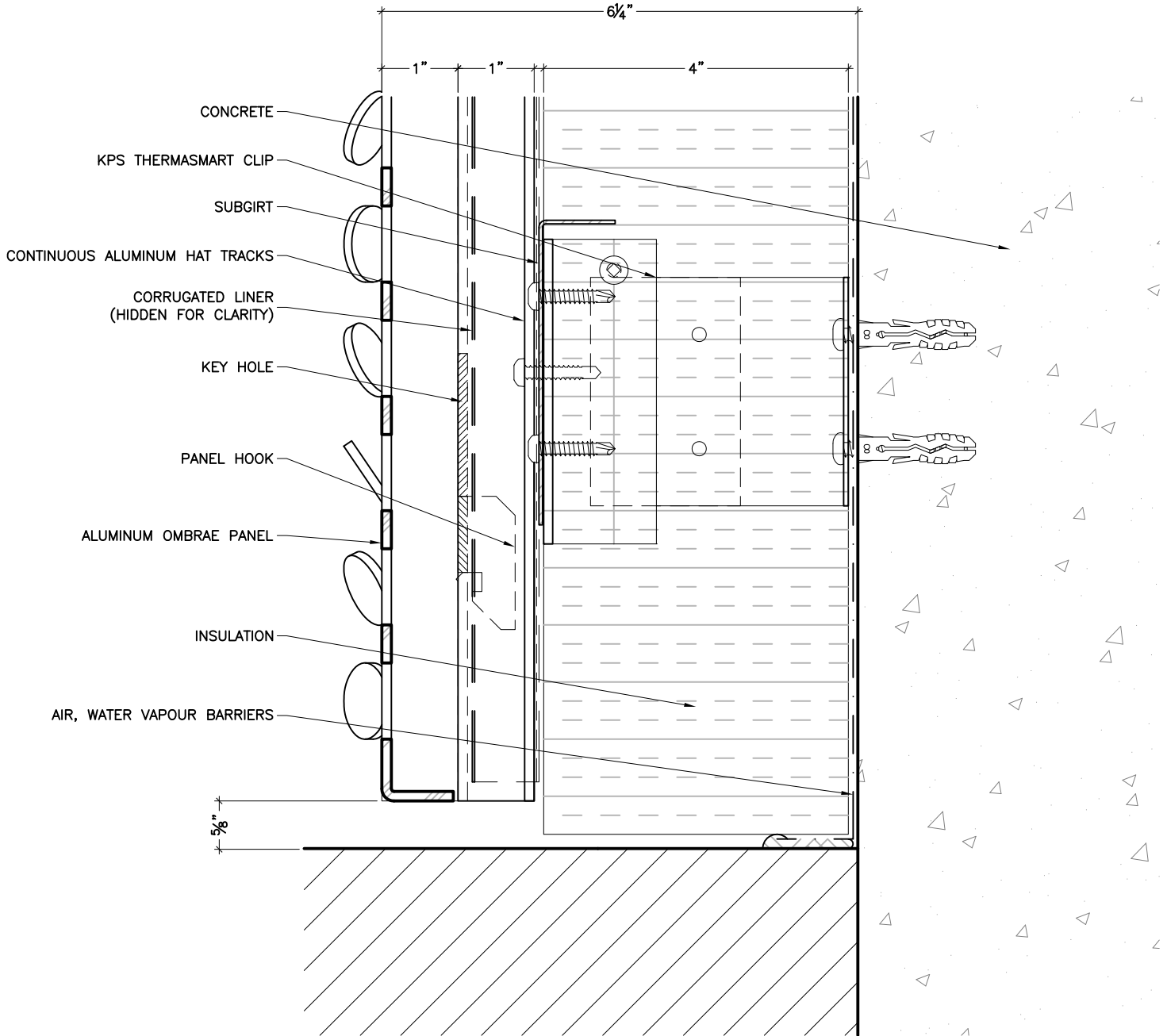


WEST AND NORTH ELEVATIONS

2 OF 11

# KEITH PANEL SYSTEMS

## LOCK MOUNT SYSTEM OMBRAE DETAILS

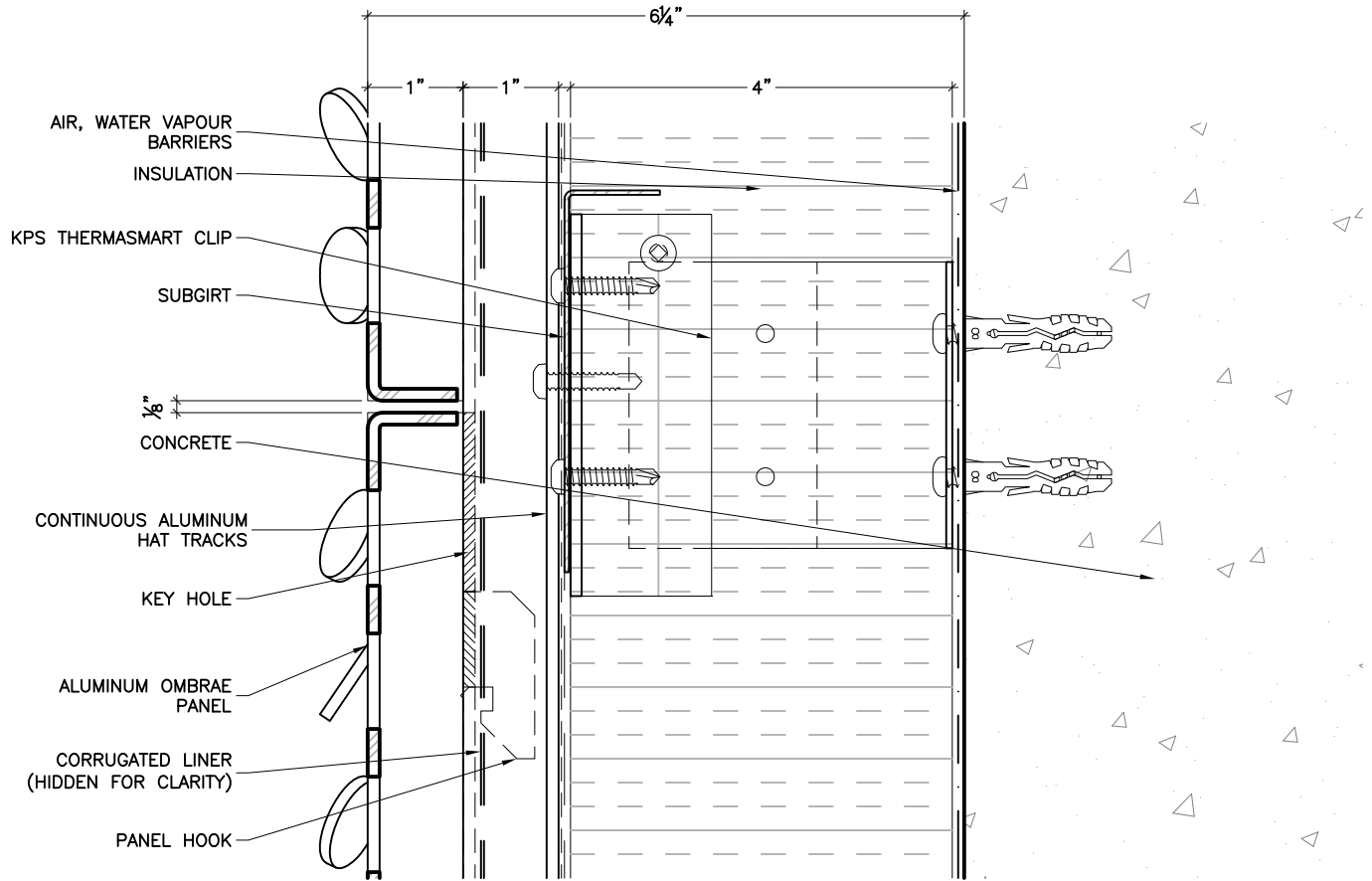


## PANEL SILL AT FINISHED GRADE/BALCONY

3 OF 11

# KEITH PANEL SYSTEMS

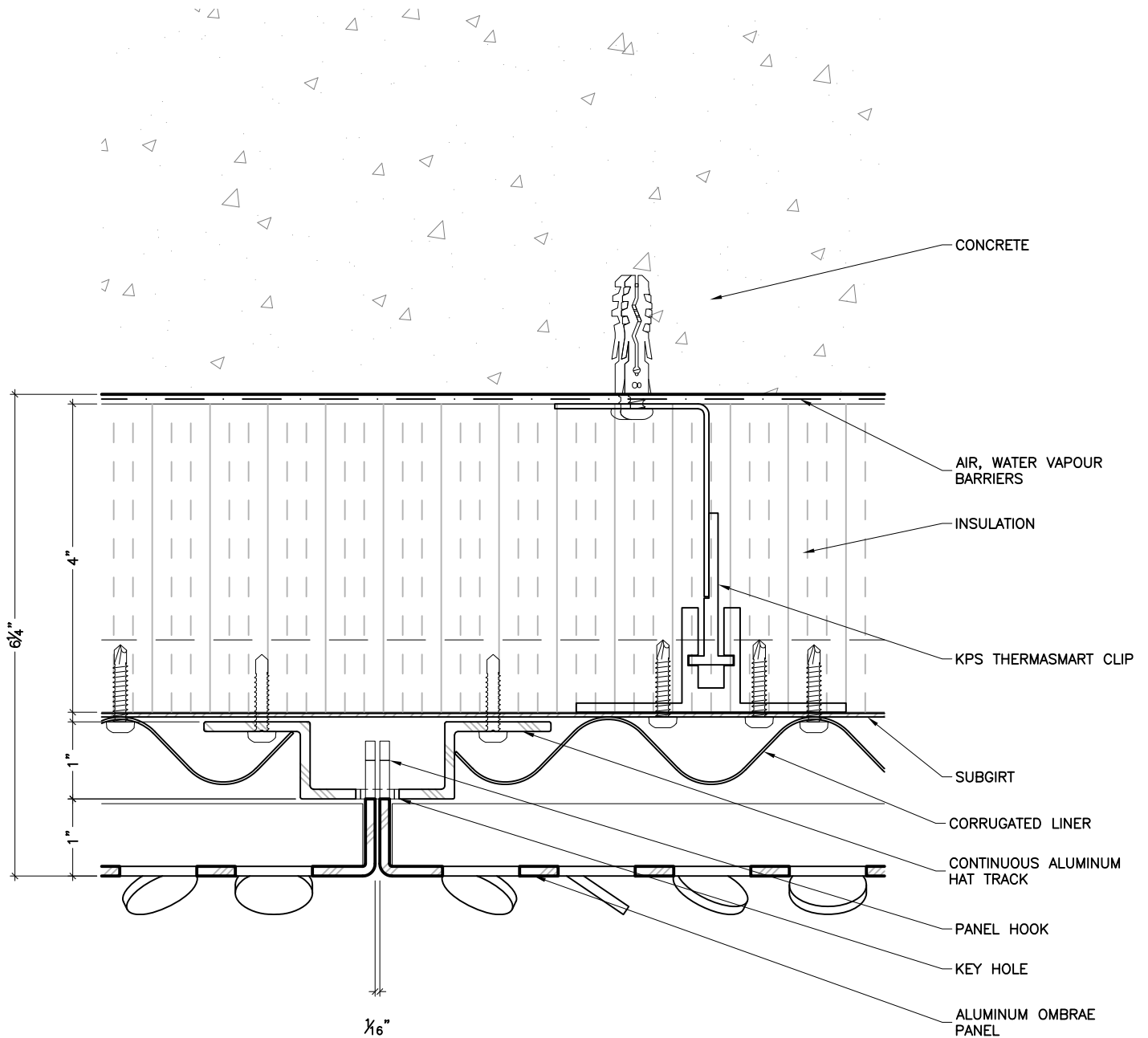
## LOCK MOUNT SYSTEM OMBRAE DETAILS



## HORIZONTAL JOINT

# KEITH PANEL SYSTEMS

## LOCK MOUNT SYSTEM OMBRAE DETAILS

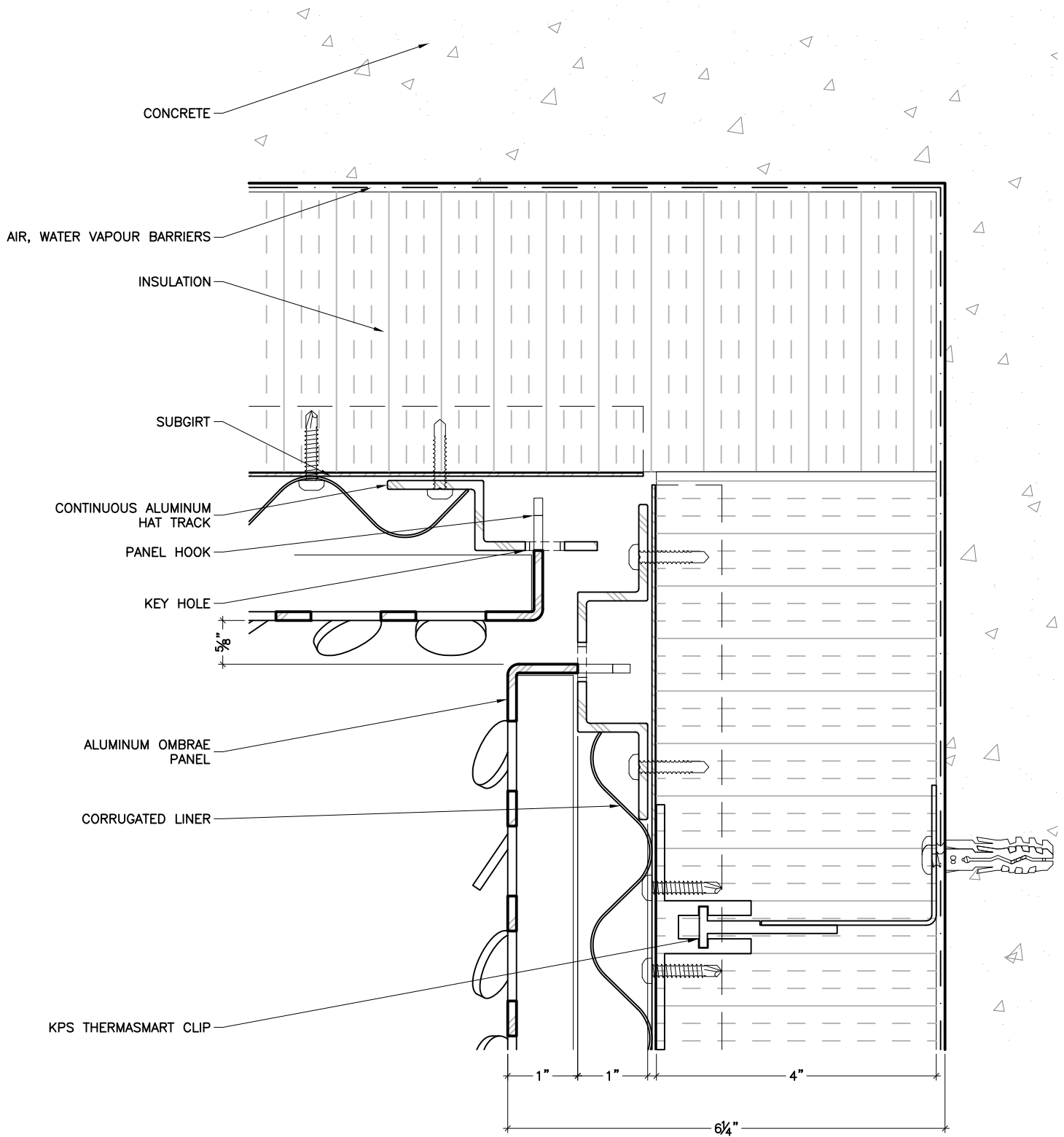


VERTICAL JOINT

5 OF 11

# KEITH PANEL SYSTEMS

## LOCK MOUNT SYSTEM OMBRAE DETAILS



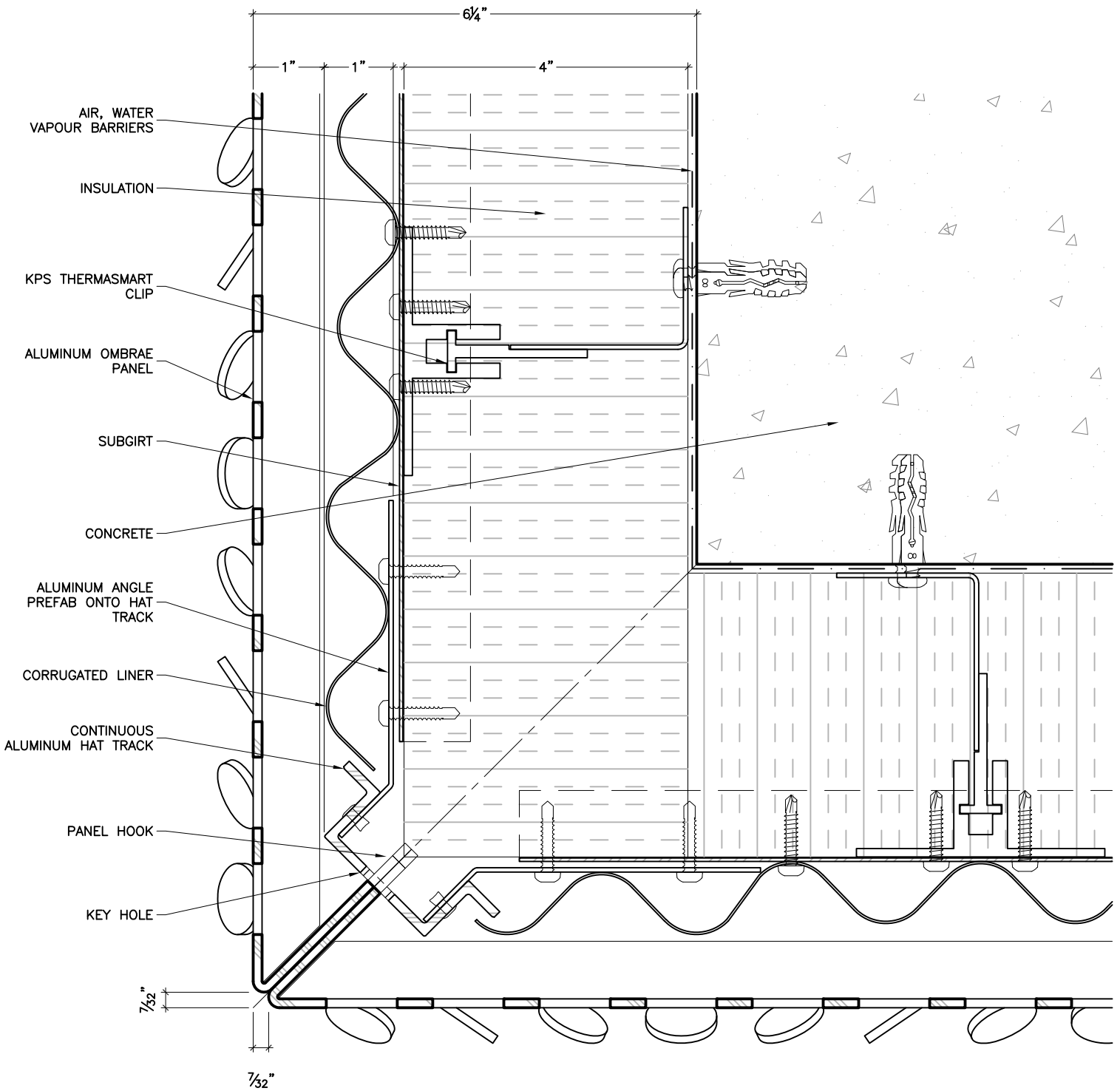
PLAN DETAIL  
INSIDE CORNER

6 OF 11



# KEITH PANEL SYSTEMS

## LOCK MOUNT SYSTEM OMBRAE DETAILS

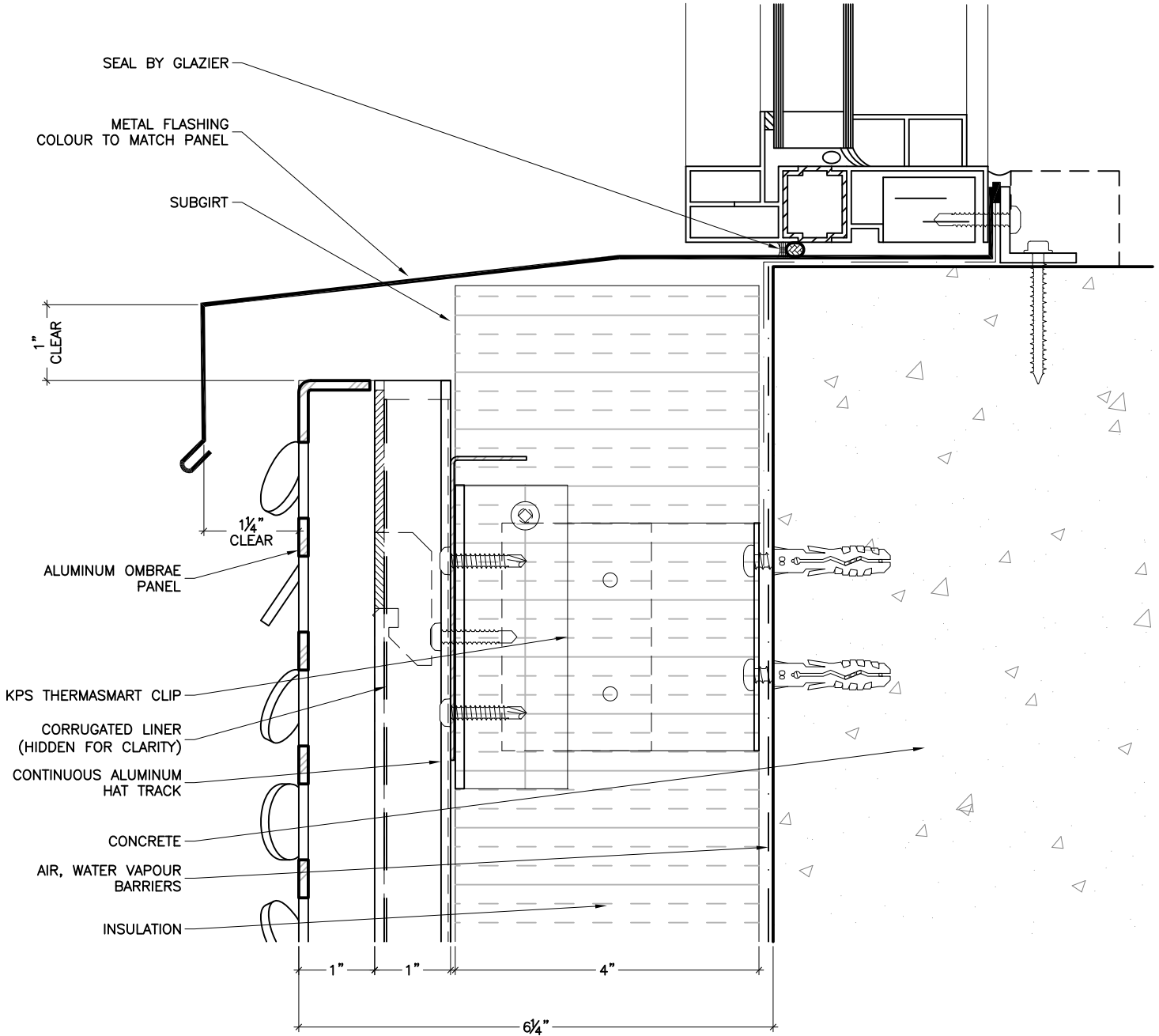


PLAN DETAIL  
OUTSIDE CORNER

7 OF 11

# KEITH PANEL SYSTEMS

## LOCK MOUNT SYSTEM OMBRAE DETAILS

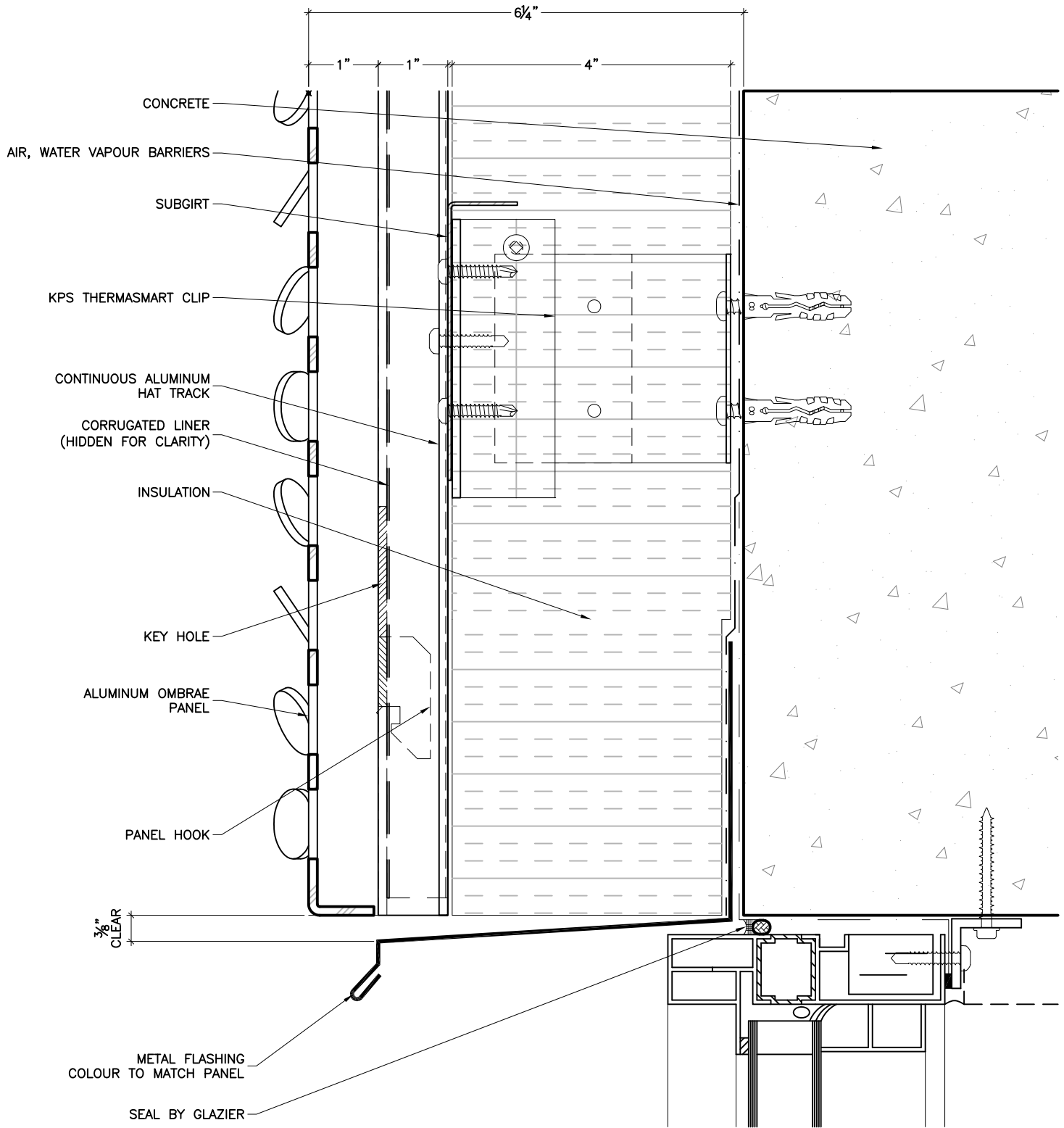


WINDOW SILL

8 OF 11

# KEITH PANEL SYSTEMS

## LOCK MOUNT SYSTEM OMBRAE DETAILS

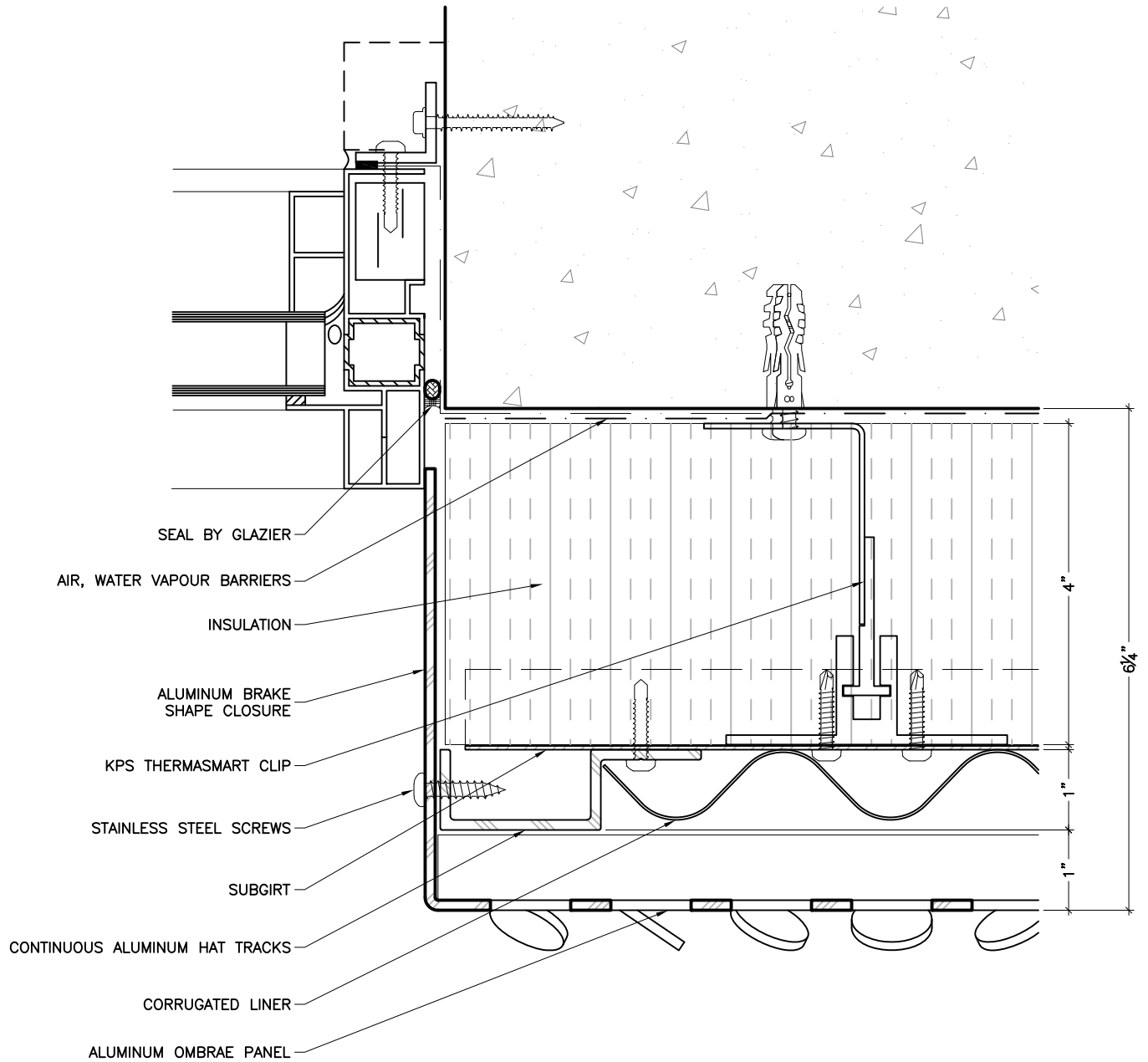


WINDOW HEAD

9 OF 11

# KEITH PANEL SYSTEMS

## LOCK MOUNT SYSTEM OMBRAE DETAILS

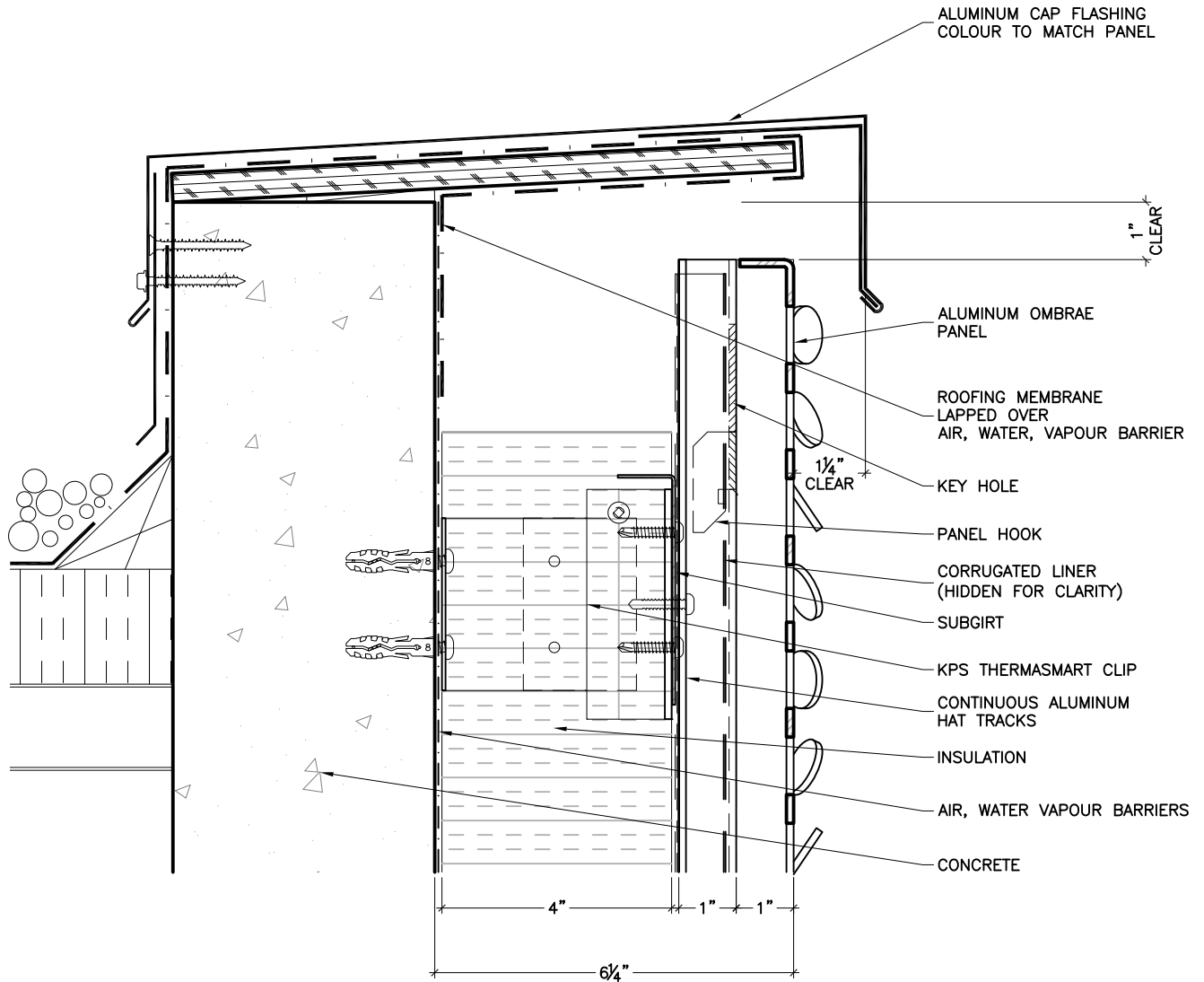


WINDOW JAMB

10 OF 11

# KEITH PANEL SYSTEMS

## LOCK MOUNT SYSTEM OMBRAE DETAILS



## PARAPET SECTION DETAIL

11 OF 11