

The KPS 4DL - Low Profile Frame louver is a 4" (102 mm) deep, extruded aluminum, drainable stationary louver designed to maintain intake and exhaust performance while resisting water infiltration. It provides protection against general weather conditions while providing a high free area. The units install easily in most common wall configurations. The blade design effectively captures run-off water at the guttered front end. The vertical jamb extrusion is a low profile plate that minimizes the appearance of a vertical frame.

**STANDARD CONSTRUCTION**

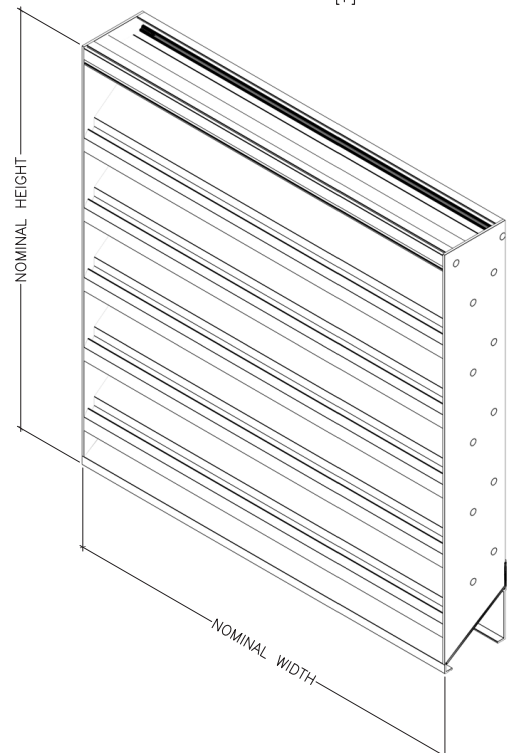
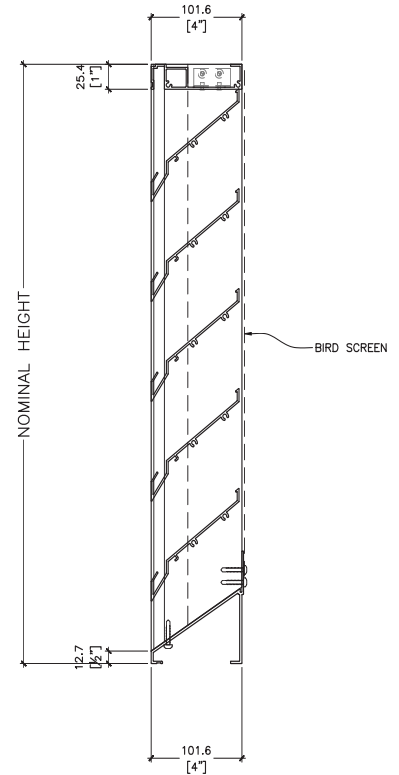
- Material:** Type 6063-T6 extruded aluminum
- Frame Depth:** 4" (102mm)
- Frame Thickness:** 0.080" (2.03mm)
- Blade Thickness:** 0.080" (2.03mm)
- Blade Angle:** 45 degrees.
- Blade Spacing:** 5.25" (133mm) O.C.
- Mullion Width:** 1" (25.4mm)
- Birdscreen Option:** 0.5" x 1/16" (12.7mm x 1.6mm) openings  
Aluminum or stainless steel  
adds approximately 3/8" (10mm) to louver depth
- Widths:** Min. 12" (305mm) / Max. 72" (1829mm)
- Heights:** Min. 12" (305mm) / Max. 120" (3048mm)
- Fasteners:** NZF3000 corrosion resistant

**PERFORMANCE:**

- Free Area:** 63% (8.75sf) based on 48" x 48" unit
- Water Penetration:** Begins at 394.4 fpm (0.01 oz / ft<sup>2</sup>)

**OPTIONAL FINISHES:**

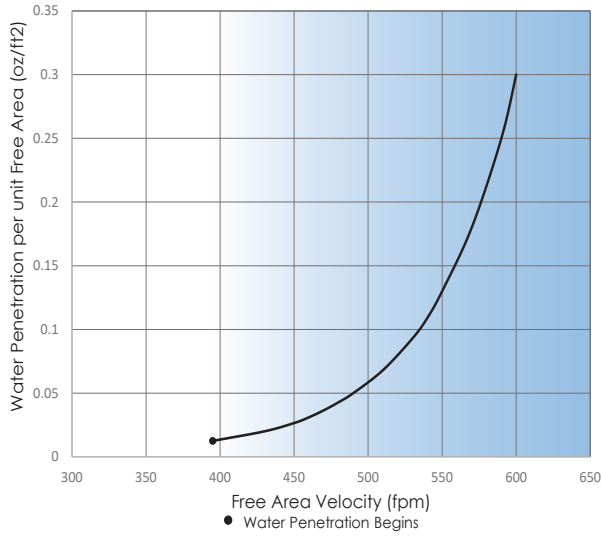
- Powder Coat AAMA 2603 or 2605 / Custom Colour.
- Clear Anodized Class 1
- Light, Medium, or Dark Bronze Anodized
- Black Anodized



Keith Panel Systems Co. Ltd. certifies that the KPS 4DL Louver model shown here is licensed to bear the AMCA seal. The ratings shown are based on tests and procedures performed in accordance with AMCA Publication 511 and comply with the requirements of the AMCA Certified Ratings Program. The AMCA Certified Ratings Seal applies only to air performance and water penetration ratings.

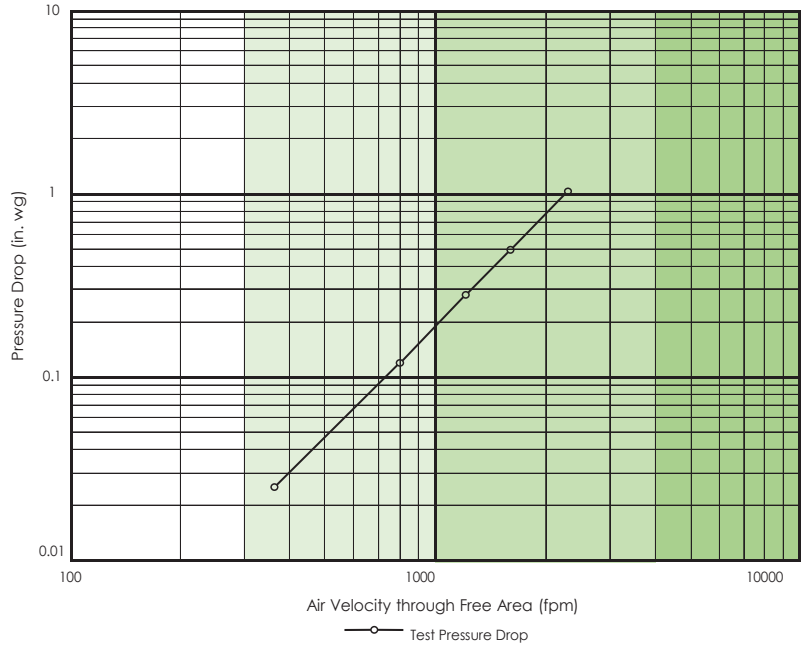
December 2024

**WATER PENETRATION**  
Test Size 48" x 48"



Beginning point of water penetration at 0.01 oz/ft<sup>2</sup> - free area 395 FPM

**PRESSURE DROP**  
Test Size 48" x 48"



**FREE AREA (square feet)**

**LOUVER WIDTH (inches)**

LOUVER HEIGHT (inches)	LOUVER WIDTH (inches)																			
	12	18	24	30	36	42	48	54	60	66	72	78	84	90	96	102	108	114	120	
12	0.34	0.54	0.93	1.12	1.32	1.71	1.90	2.29	2.49	2.68	3.08	3.27	3.47	3.86	4.05	4.44	4.64	4.83	5.22	
18	0.55	0.86	1.48	1.80	2.11	2.73	3.05	3.67	3.98	4.30	4.92	5.23	5.55	6.17	6.48	7.11	7.42	7.73	8.36	
24	0.75	1.18	2.04	2.47	2.90	3.76	4.19	5.05	5.48	5.91	6.77	7.19	7.62	8.48	8.91	9.77	10.20	10.63	11.49	
30	0.95	1.50	2.59	3.14	3.69	4.78	5.33	6.42	6.97	7.52	8.61	9.16	9.70	10.80	11.34	12.44	12.99	13.53	14.63	
36	1.16	1.82	3.15	3.81	4.48	5.81	6.47	7.80	8.46	9.13	10.46	11.12	11.78	13.11	13.78	15.10	15.77	16.43	17.63	
42	1.36	2.14	3.71	4.49	5.27	6.83	7.61	9.18	9.96	10.74	12.30	13.08	13.86	15.43	16.21	17.77	18.55	19.33	20.89	
48	1.57	2.47	4.26	5.16	6.06	7.86	8.75	10.55	11.45	12.35	14.15	15.04	15.94	17.74	18.64	20.43	21.33	22.23	24.03	
54	1.77	2.79	4.82	5.83	6.85	8.88	9.90	11.93	12.94	13.96	15.99	17.01	18.02	20.05	21.07	23.10	24.12	25.13	27.16	
60	1.98	3.11	5.37	6.51	7.64	9.91	11.04	13.30	14.44	15.57	17.84	18.97	20.10	22.37	23.50	25.77	26.90	28.03	30.30	
66	2.18	3.43	5.93	7.18	8.43	10.93	12.18	14.68	15.93	17.18	19.68	20.93	22.18	24.68	25.93	28.43	29.68	30.93	33.43	
72	2.38	3.75	6.49	7.85	9.22	11.96	13.32	16.06	17.42	18.79	21.53	22.89	24.26	26.99	28.36	31.10	32.46	33.83	36.56	
78	2.59	4.07	7.04	8.53	10.01	12.98	14.46	17.43	18.92	20.40	23.37	24.86	26.34	29.31	30.79	33.76	35.25	36.73	39.70	
84	2.79	4.40	7.60	9.20	10.80	14.00	15.61	18.81	20.41	22.01	25.22	26.82	28.42	31.62	33.22	36.43	38.03	39.63	42.83	
90	3.00	4.72	8.15	9.87	11.59	15.03	16.75	20.19	21.90	23.62	27.06	28.78	30.50	33.94	35.65	39.09	40.81	42.53	45.97	
96	3.20	5.04	8.71	10.55	12.38	16.05	17.89	21.56	23.40	25.23	28.91	30.74	32.58	36.25	38.09	41.76	43.59	45.43	49.10	
102	3.41	5.36	9.27	11.22	13.17	17.08	19.03	22.94	24.89	26.84	30.75	32.70	34.66	38.56	40.52	44.42	46.38	48.33	52.24	
108	3.61	5.68	9.82	11.89	13.96	18.10	20.17	24.31	26.38	28.46	32.60	34.67	36.74	40.88	42.95	46.99	49.16	51.23	55.37	
114	3.82	6.00	10.38	12.57	14.75	19.13	21.32	25.69	27.88	30.07	34.44	36.63	38.82	43.19	45.38	49.75	51.94	54.13	58.50	
120	4.02	6.33	10.93	13.24	15.54	20.15	22.46	27.07	29.37	31.68	36.29	38.59	40.90	45.50	47.81	52.42	54.72	57.03	61.64	